


ADD-A-UNIT



OFFICE
and
BANK

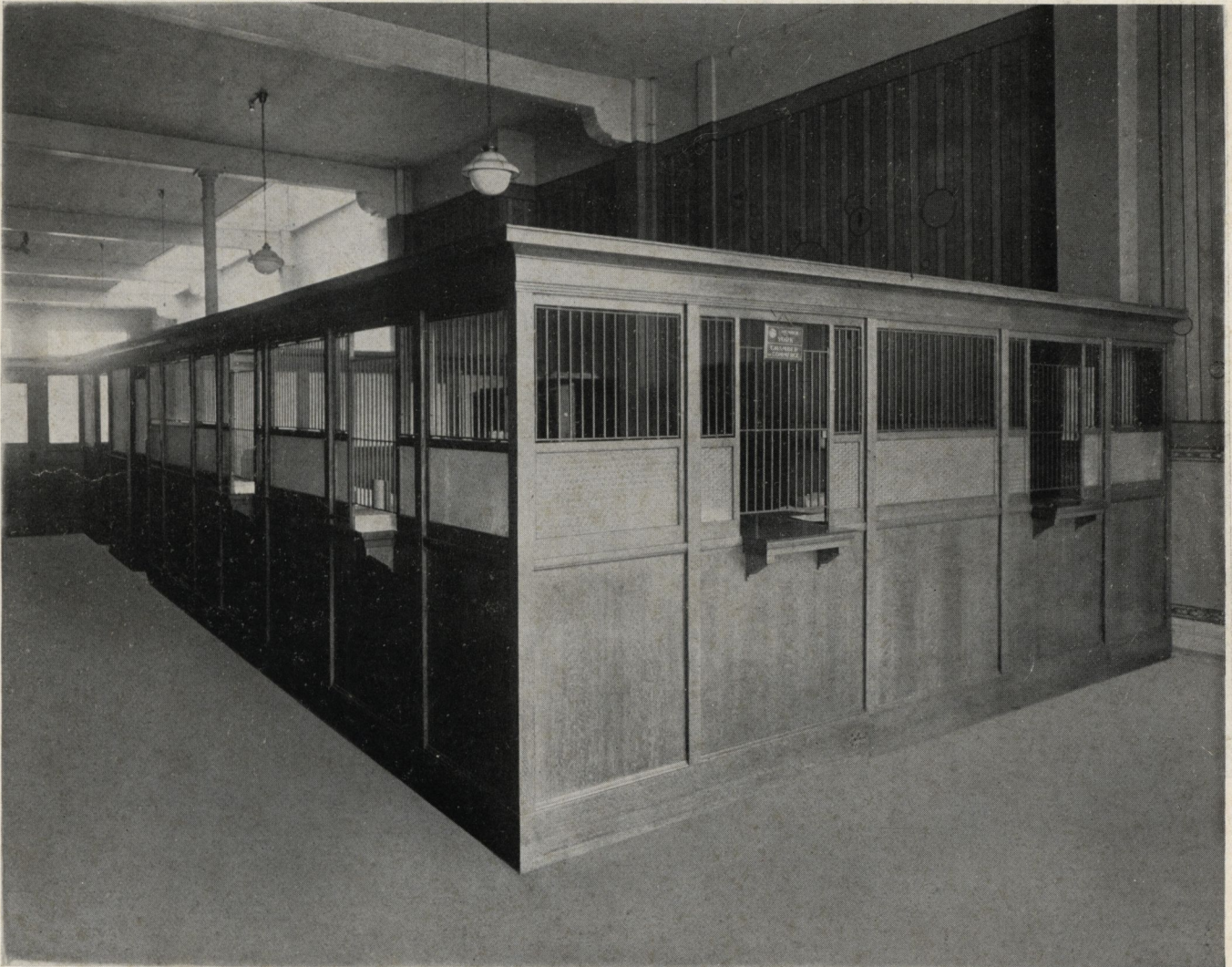
PARTITIONS

Catalog No. 35

900 (35)
PORTABLE ~ SOLID ~ RIGID

Aristocrat C Partition

MEETS THE DEMANDS OF THE MAJORITY. IT IS ATTRACTIVE IN APPEARANCE AS SHOWN BY THIS ILLUSTRATION

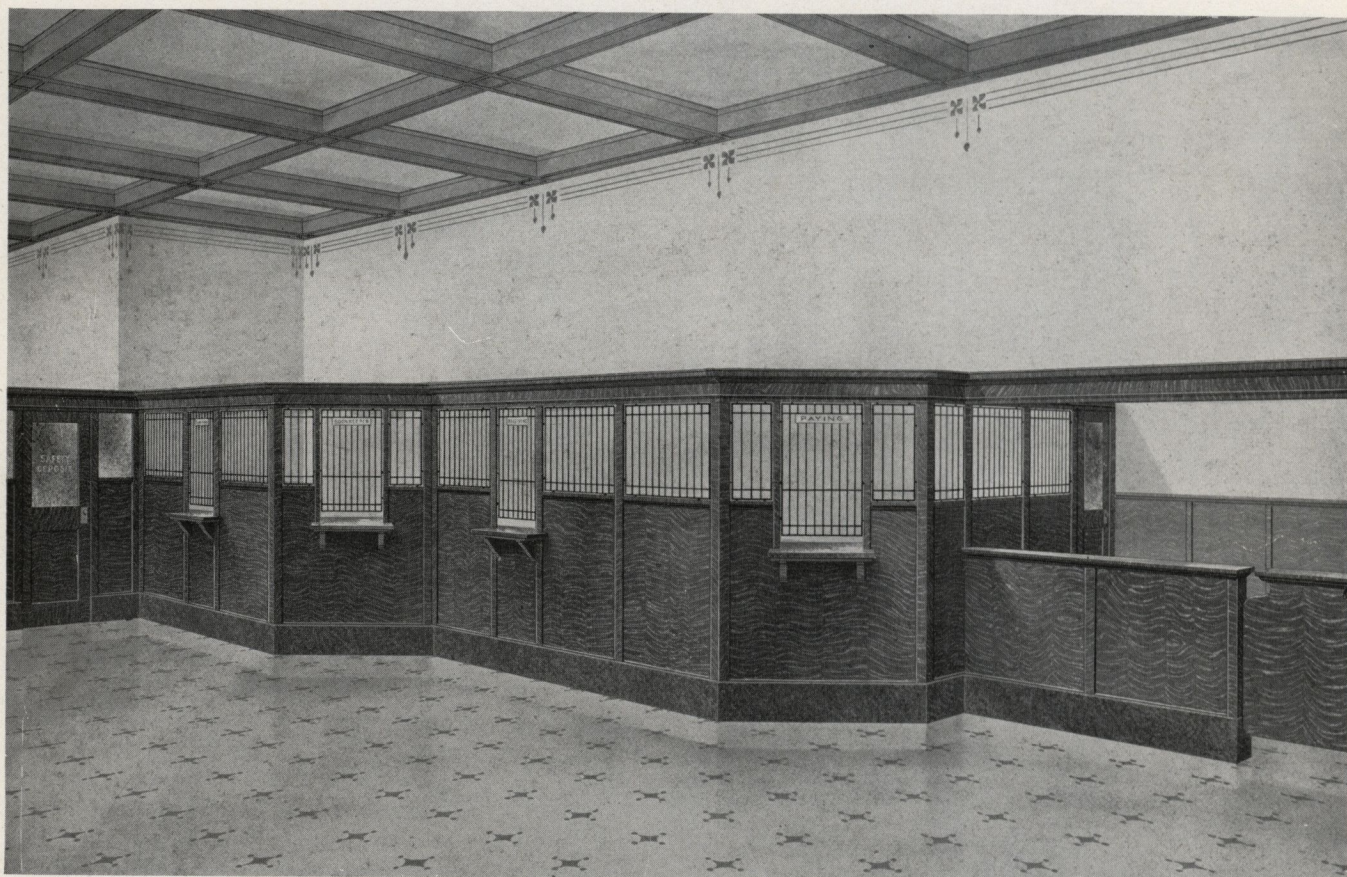


ARISTOCRAT C ADD-A-UNIT PARTITION is shown in the establishment of the Community Discount Company, York, Pennsylvania. The graceful dignified lines of this model are convincing proof of the tremendous advantages derived from purchasing a partition that is made under methods of painstaking accuracy. Only a complete line could completely equip offices like this one.

ADD-A-UNIT PARTITIONS

Aristocrat A Partition—Seven Feet High

DECIDEDLY POPULAR! THE DIVERSIFIED ADD-A-UNIT LINE
INCLUDES ANOTHER ARISTOCRAT DESIGN



ARISTOCRAT A ADD-A-UNIT BANK AND OFFICE PARTITION: This beautiful, sturdy, finely finished, high-die bank partition is made of the very best materials purchasable; the lines are plain and dignified. This design will harmonize with the most elaborate furnishings, as it has been sold for use in innumerable high-grade banking rooms and offices and all purchasers are hearty endorsers of this model.

The total height of this partition is 7 feet 2 inches. The panel in the lower part is 4 feet 6 inches in height from floor to ledge line and is constructed of 5-ply stock, using beautifully figured veneers selected for fine vertical graining, which show to splendid advantage. The wood base is 8 inches in height. The upper screen is arranged with 5/16 inch square bar steel grille 22½ inches in height and the massive top cornice completes the partition, the effect of which is decidedly attractive. Clear or chipped plate glass can be used in the upper screen instead of grille if desired.

The individual units are manufactured and carried in stock in widths measuring from 1 foot 6 inches to 3 feet 6 inches, making it possible to arrange equipments to fit any space. Door frame 3 feet in width. Doors 2 feet 8 inches wide.

MATERIALS USED IN CONSTRUCTION OF ARISTOCRAT A ADD-A-UNIT PARTITION: Wood parts in Birch; all parts are made of selected Birch except the large panel in the lower part which is made of 5-ply construction using Mahogany veneer for outside surfaces. In Oak; all wood parts are quarter-sawed, the large panel in the lower part is made of 5-ply construction using quarter-sawed veneer for outside surfaces.

FINISH: All shades of Mahogany and Walnut, also light and dark Oak. Flat or Gloss varnish surface.

HARDWARE: All hardware is furnished in our standard dull black finish.

PORTABLE ~ SOLID ~ RIGID

Aristocrat A Partition in Use

NOTHING BUT QUALITY CAN ACCOUNT FOR SUCH POPULARITY!

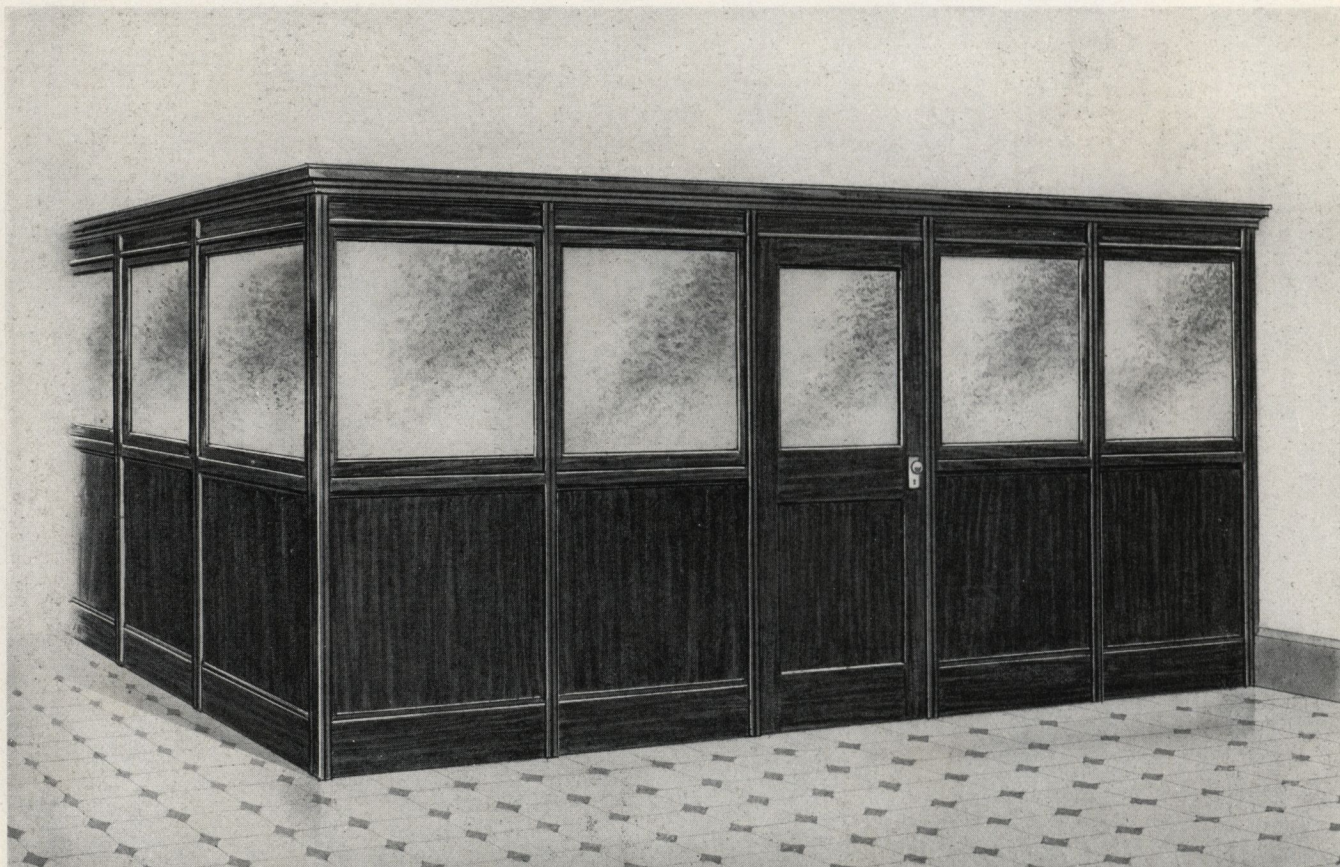


ARISTOCRAT A ADD-A-UNIT PARTITION with clear plate glass in the upper screen is shown in the illustration in the Banking Room of the Moxham National Bank, Johnstown, Pennsylvania. The partition is equipped with 8 inch high Dark Tennessee Marble base. The wood parts are Birch and Mahogany combination finished in a rich dark Mahogany color. The users of this equipment are enthusiastic about ADD-A-UNIT construction.

ADD-A-UNIT PARTITIONS

Peerless B Partition—Seven Feet High

A SIMPLER TYPE OF FIVE-PLY PANEL PARTITION FOR YOUR OFFICE WILL BE FOUND IN THIS MODEL. PERFECT IN EVERY DETAIL



PEERLESS B ADD-A-UNIT PARTITION, is one of our very latest office partition designs and one we are certain will meet with unanimous approval. This partition is in excellent harmony throughout. A very attractive design practical to the requirements of present day offices.

The total height of the partition is 7 feet 2 inches. The panel in the lower part measures 3 feet 6 inches in height from floor to ledge line, and is made of 5-ply stock. The Mahogany and Oak veneers used in the construction are vertically grained. The wood base is 10 inches in height, and is included in the total height of the partition. The upper screen is arranged with opaque glass, Florentine or Maze patterns.

The standardized units measure 1 foot 6 inches, 2 feet, 2 feet 6 inches, 3 feet and 3 feet 6 inches in width. Door frames 3 feet in width. Doors 2 feet 10 inches wide.

MATERIALS USED IN CONSTRUCTION OF PEERLESS B ADD-A-UNIT PARTITION: Wood parts in Birch; all parts are made of selected Birch except the large panel in the lower part which is made of 5-ply construction using Mahogany veneer for outside surfaces. In Oak; all wood parts are plain Oak throughout except the large panel in the lower part which is made of 5-ply construction using quarter-sawed Oak veneer for outside surfaces.

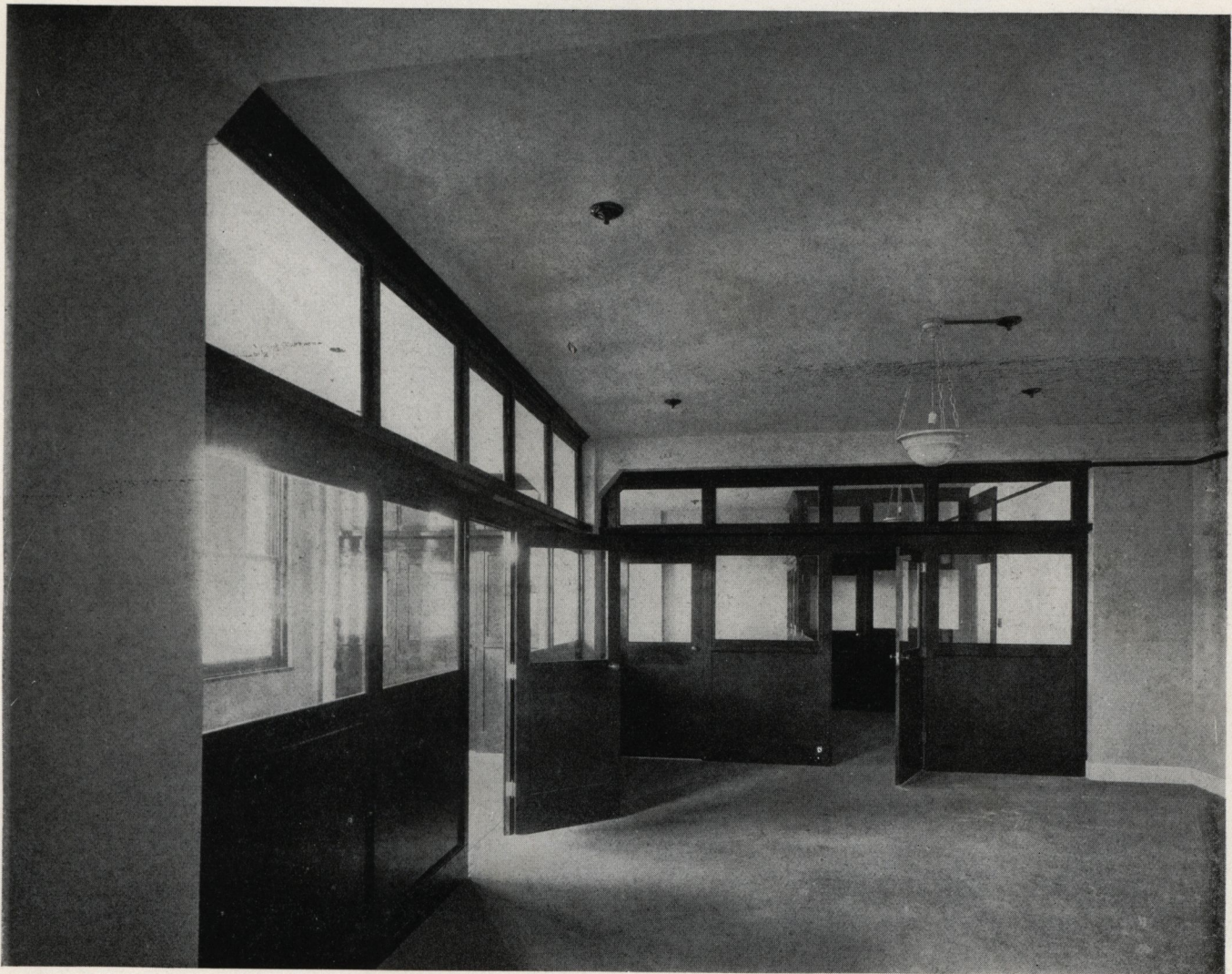
FINISH: All shades of Mahogany and Walnut, also light and dark Oak. Flat or Gloss varnish surface.

HARDWARE: All hardware is furnished in our standard dull black finish.

PORTABLE ~ SOLID ~ RIGID

Peerless B Partition—Ceiling Height

A PEERLESS EQUIPMENT ASSURES AN UNVARYING UNIFORM HIGH QUALITY, AND EXPRESSES THAT KEYNOTE OF DIGNITY AND LUXURY SO MUCH DESIRED

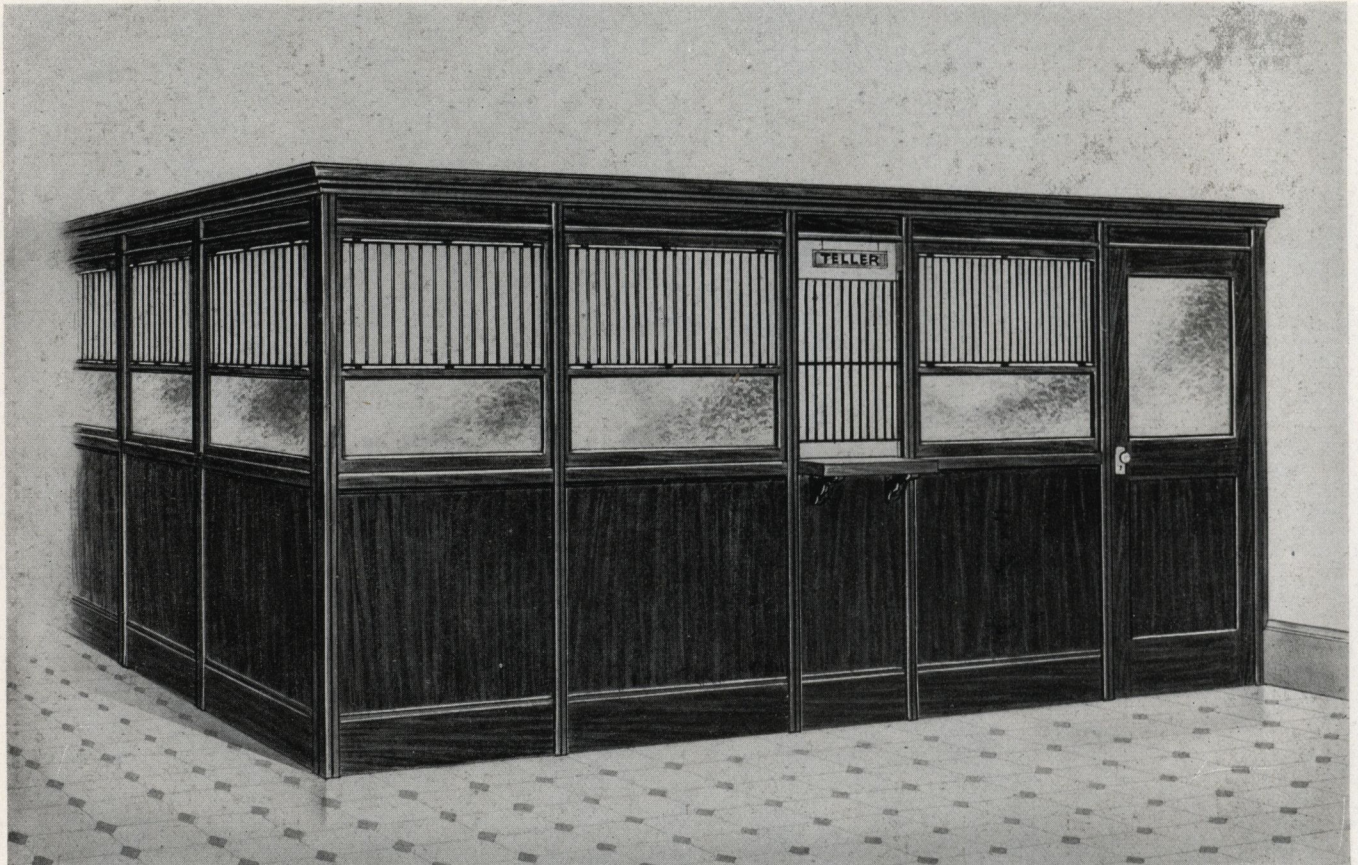


PEERLESS B ADD-A-UNIT PARTITION CEILING HEIGHT is arranged by adding Peerless design upper structure to extend to the ceiling. Peerless upper structure can be supplied in heights to accommodate any ceiling. The illustration shows Peerless partition ceiling height in the Union National Bank of Cleveland—they found the solution of their partition problem in the remarkably simplified Peerless unit.

ADD-A-UNIT PARTITIONS

Peerless C Partition—Seven Feet High

THIS NEW MODEL ADAPTS ITSELF ADMIRABLY TO THE
BANKING ROOM—RADIANT WITH QUALITY



PEERLESS C ADD-A-UNIT BANK AND OFFICE PARTITION is perfect in artistry of appointment; in staunchness and safety of construction—it is gratifying to note the *preference* for this design.

The total height is 7 feet 2 inches. The panel in the lower part measures 3 feet 6 inches in height from floor to ledge line and is made of 5-ply stock. The Mahogany and Oak veneers used are vertically grained. Wood base 8 inches high. The upper screen is arranged with 5/16 square bar steel grille 18 $\frac{3}{4}$ inches high and glass 12 inches high. Each unit is equipped with half post which forms full post when joined. The standardized units measure 1 foot 6 inches, 2 feet, 2 feet 6 inches, 3 feet and 3 feet 6 inches in width. Door frames 3 feet wide. Doors 2 feet 10 inches wide.

MATERIALS USED IN CONSTRUCTION OF PEERLESS C ADD-A-UNIT PARTITION: Wood parts in Birch; all parts are made of selected Birch except the large panel in the lower part which is made of 5-ply construction using Mahogany veneer for outside surfaces. In Oak; all wood parts are plain Oak throughout except the large panel in the lower part which is made of 5-ply construction using quarter-sawed Oak veneer for outside surfaces.

FINISH: All shades of Mahogany and Walnut, also light and dark Oak. Flat or Gloss varnish surface.

HARDWARE: All hardware is furnished in our standard dull black finish.

PORTABLE ~ SOLID ~ RIGID

Peerless C Partition in Use

THIS MODEL ATTAINS NEW HEIGHTS OF PERFECTION—
IN BEAUTY OF LINE AND FINISH

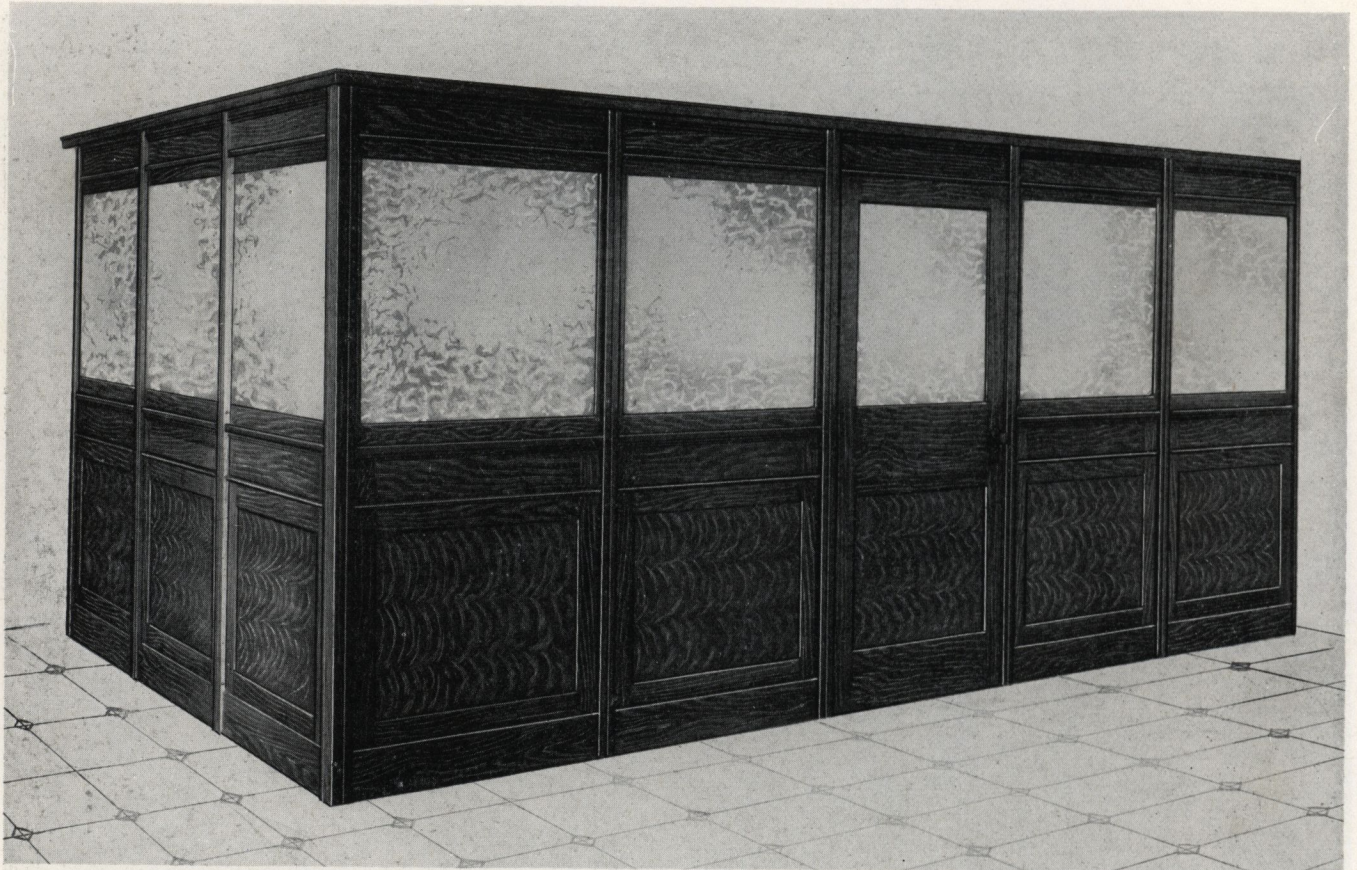


PEERLESS C ADD-A-UNIT PARTITION: an elaborate Banking Room is shown here enclosed with Peerless C Partition; Peerless B with upper structure for the private office, and low railings for switchboard operators, etc. This installation is an important one in Minneapolis, Minnesota. The arrangement is efficient from every standpoint.

ADD-A-UNIT PARTITIONS

E-Z-Set B Partition—Seven Feet High

“ENDURING PARTITIONS OF GOOD TASTE” IS THE VERDICT
WHERE AN E-Z-SET MODEL IS INCLUDED



E-Z-SET B ADD-A-UNIT OFFICE PARTITION, is a model that has proven decidedly popular for subdividing office spaces. The lines are plain and dignified and will harmonize with the best modern office furniture.

The total height is 7 feet 2 inches over all. The lower part measures 3 feet 6 inches in height from floor to ledge line. The upper screen is equipped with opaque glass. The standardized units measure 1 foot 6 inches, 2 feet, 2 feet 6 inches, 3 feet and 3 feet 6 inches. Door frames 3 feet in width. Doors 2 feet 10 inches wide.

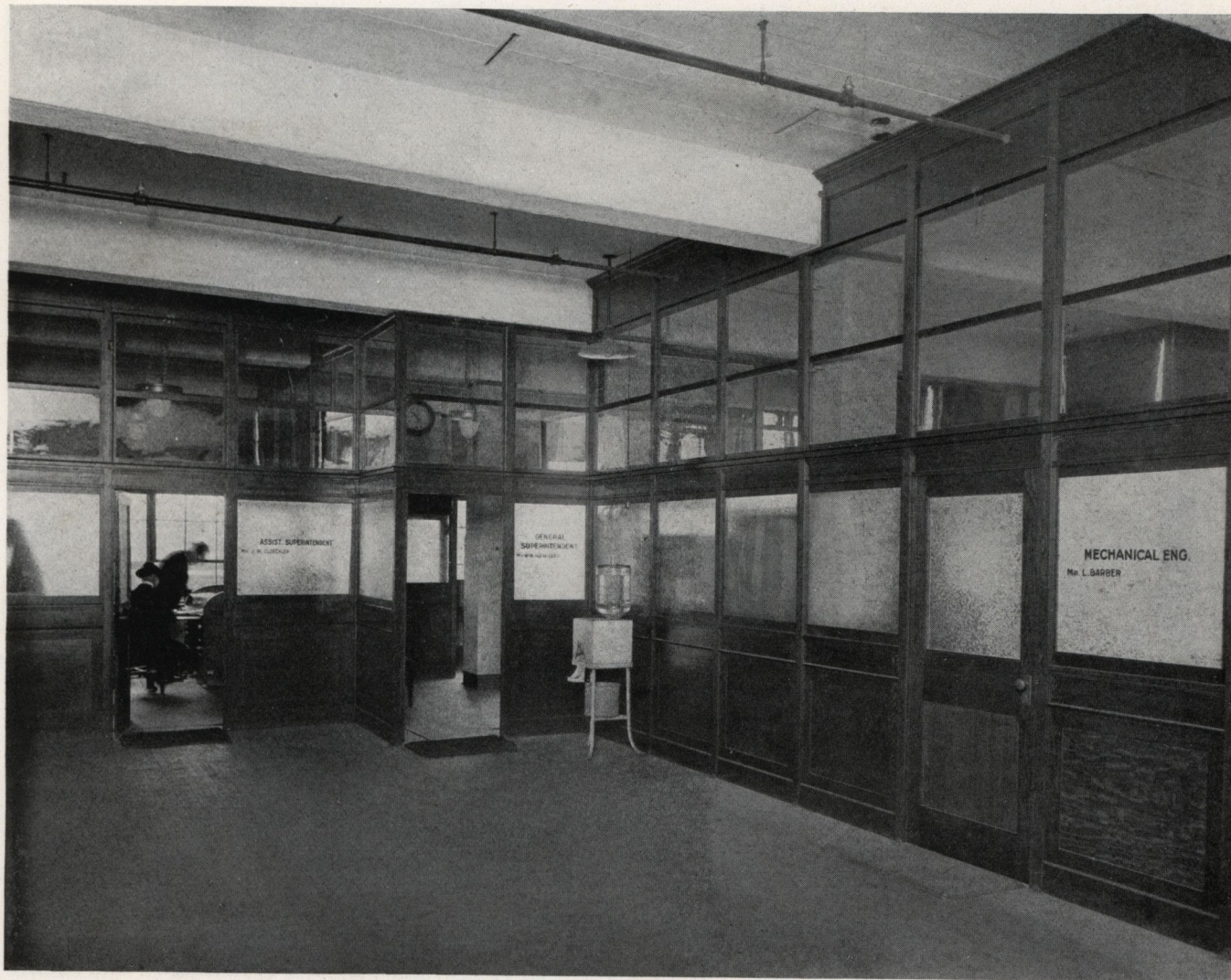
MATERIALS USED IN CONSTRUCTION OF E-Z-SET B ADD-A-UNIT PARTITION: Wood parts in Birch; all parts are made of selected Birch except the large panel in the lower part which is made of 3-ply construction using Mahogany veneer for outside surfaces. In Oak; all parts are plain Oak except the large panel in the lower part which is made of 3-ply construction using quarter-sawn veneer for outside surfaces.

FINISH: All shades of Mahogany and Walnut, also light and dark Oak. Flat or Gloss varnish surface.

HARDWARE: All hardware is furnished in our standard dull black finish.

E-Z-Set B Partition—Ceiling Height

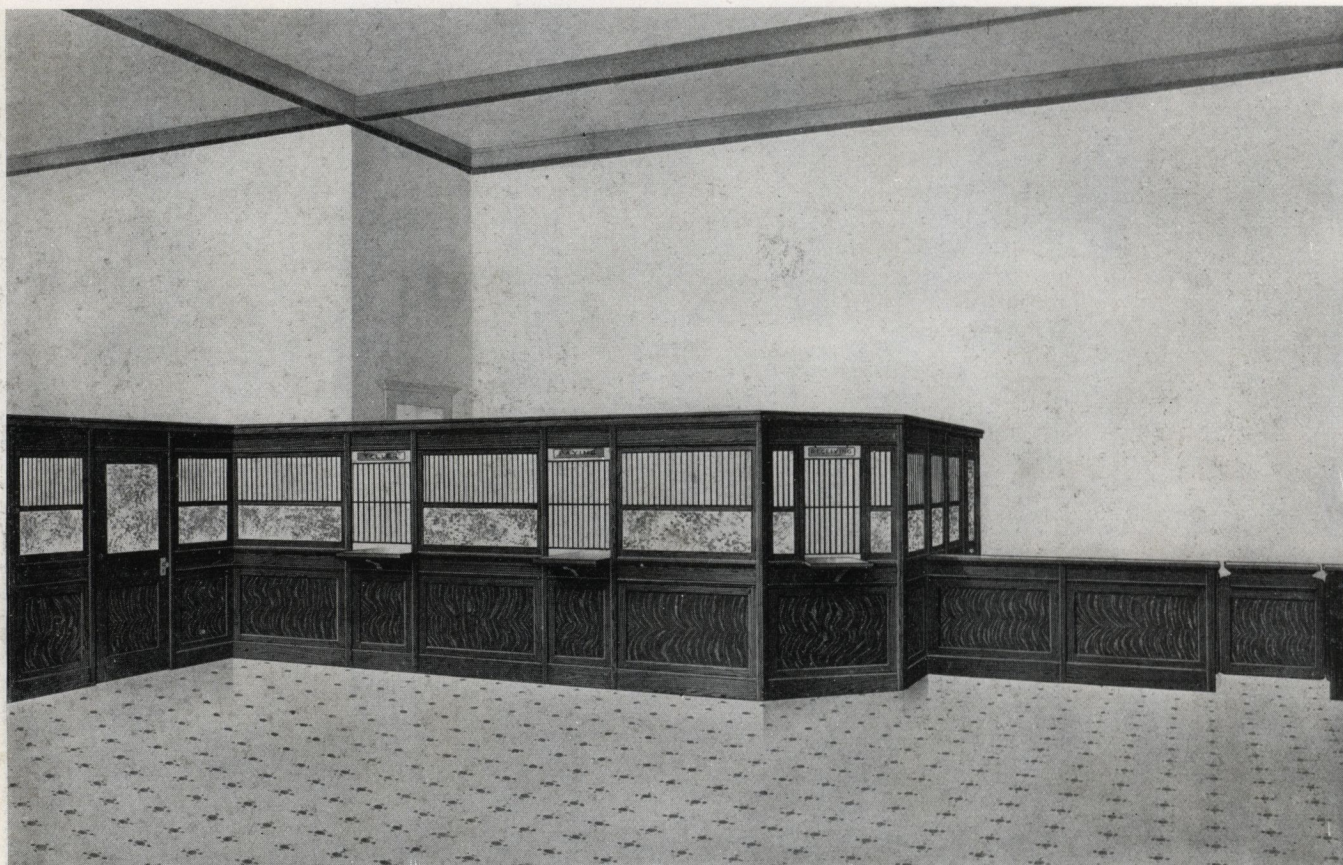
A MARVELOUS LAYOUT OF E-Z-SET OFFICE PARTITION DEMONSTRATING THE FLEXIBILITY OF WOOD AND GLASS PARTITIONS FOR SUBDIVIDING EVERY SPACE IS SHOWN HERE



E-Z-SET ADD-A-UNIT PARTITION CEILING HEIGHT is illustrated in use in the Eastern Manufacturing Plant of the National Screw & Tack Company, Cleveland, Ohio. Note the fastening of the upper structure to the ceiling—and to the beams, which demonstrates that any ceiling condition can be arranged for with ADD-A-UNIT ceiling height partitions. A prospective buyer need not be puzzled over what to do about the ceiling condition; it has been solved with ADD-A-UNIT.

E-Z-Set C Partition—Seven Feet High

QUALITY IN DESIGN—QUALITY IN CONSTRUCTION—QUALITY
IN APPEARANCE—ALL COMBINED IN THIS MODEL



E-Z-SET C ADD-A-UNIT BANK AND OFFICE PARTITION, is a model that has proven decidedly popular for banking rooms and offices.

The total height is 7 feet 2 inches over all. The lower part measures 3 feet 6 inches in height from floor to ledge line. The upper screen is arranged with opaque glass 12 inches in height, and square bar steel grille $18\frac{3}{4}$ inches high, making up the total opening in the upper part.

The standardized units measure 1 foot 6 inches, 2 feet, 2 feet 6 inches, 3 feet and 3 feet 6 inches in width. Door frames 3 feet in width. Doors 2 feet 10 inches wide.

MATERIALS USED IN CONSTRUCTION OF E-Z-SET C ADD-A-UNIT PARTITION: Wood parts in Birch; all parts are made of selected Birch except the large panel in the lower part which is made of 3-ply construction using Mahogany veneer for outside surfaces. In Oak; all parts are plain Oak except the large panel in the lower part which is made of 3-ply construction using quarter-sawed veneer for outside surfaces.

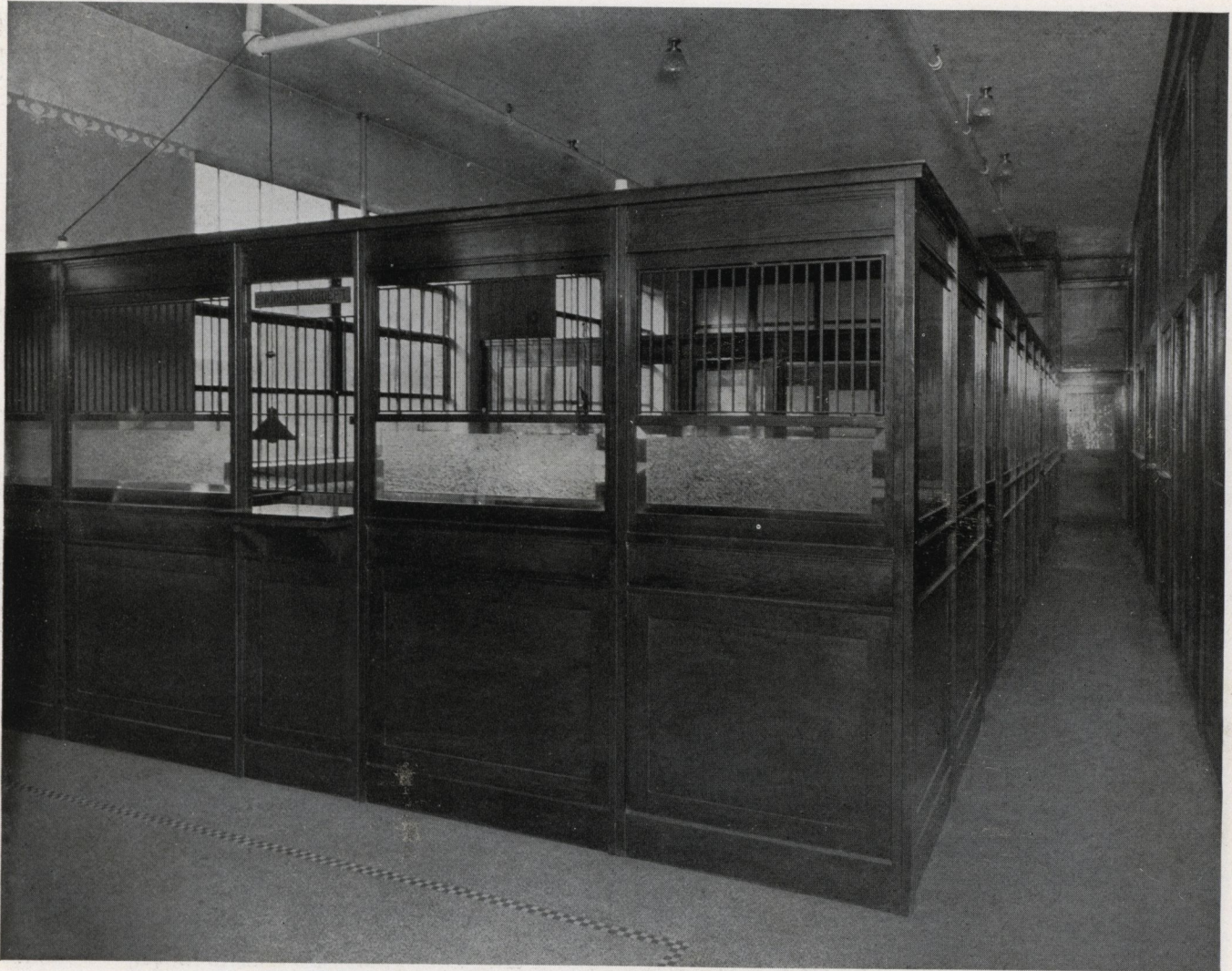
FINISH: All shades of Mahogany and Walnut, also light and dark Oak. Flat or Gloss varnish surface.

HARDWARE: All hardware is furnished in our standard dull black finish.

PORTABLE ~ SOLID ~ RIGID

E-Z-Set C Partition in Use

NO OTHER MEDIUM PRICED PARTITION EMBODIES THE PROGRESSIVENESS OF E-Z-SET
—HERE IS QUALITY OBTAINABLE AT PRICES WHICH REFLECT THE SAVINGS
OF TREMENDOUS PRODUCTION

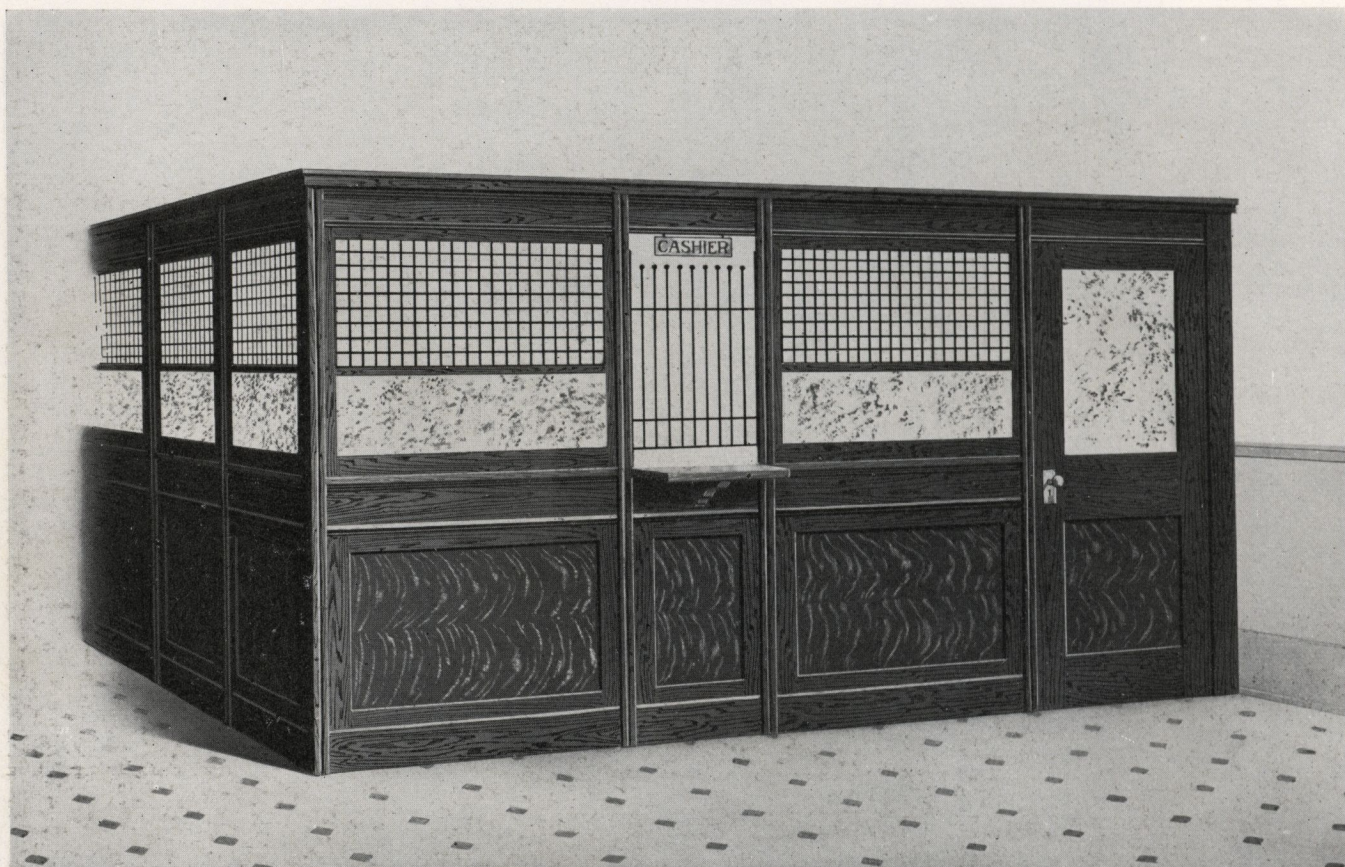


E-Z-SET C ADD-A-UNIT PARTITION shown here reflects the beauty of this model in use in the offices of a large Eastern Manufacturing Company. This partition is built to meet every demand for reliability, style and beauty.

ADD-A-UNIT PARTITIONS

E-Z-Set D Partition—Seven Feet High

THIS SHOWS ANOTHER ARTISTIC ARRANGEMENT OF THE E-Z-SET DESIGN AND IS ESPECIALLY DESIRABLE FOR BANKING ROOMS



E-Z-SET D ADD-A-UNIT BANK AND OFFICE PARTITION: This model is shown with the upper screen arranged with a combination crimped mesh measuring 18 inches in height and opaque glass 12 inches in height. This combination in the upper screen is less expensive than the square bar grille and presents a very pleasing appearance.

The total height of this model is 7 feet 2 inches over all. The lower part measures 3 feet 6 inches in height from floor to glass line.

The standardized units measure 1 foot 6 inches, 2 feet, 2 feet 6 inches, 3 feet and 3 feet 6 inches in width. The door frames are 3 feet wide. The doors are 2 feet 10 inches wide.

MATERIALS USED IN CONSTRUCTION OF E-Z-SET D ADD-A-UNIT PARTITION: Wood parts in Birch; all parts are made of selected Birch except the large panel in the lower part which is made of 3-ply construction using Mahogany veneer for outside surfaces. In Oak; all parts are plain Oak except the large panel in the lower part which is made of 3-ply construction using quarter-sawed veneer for outside surfaces.

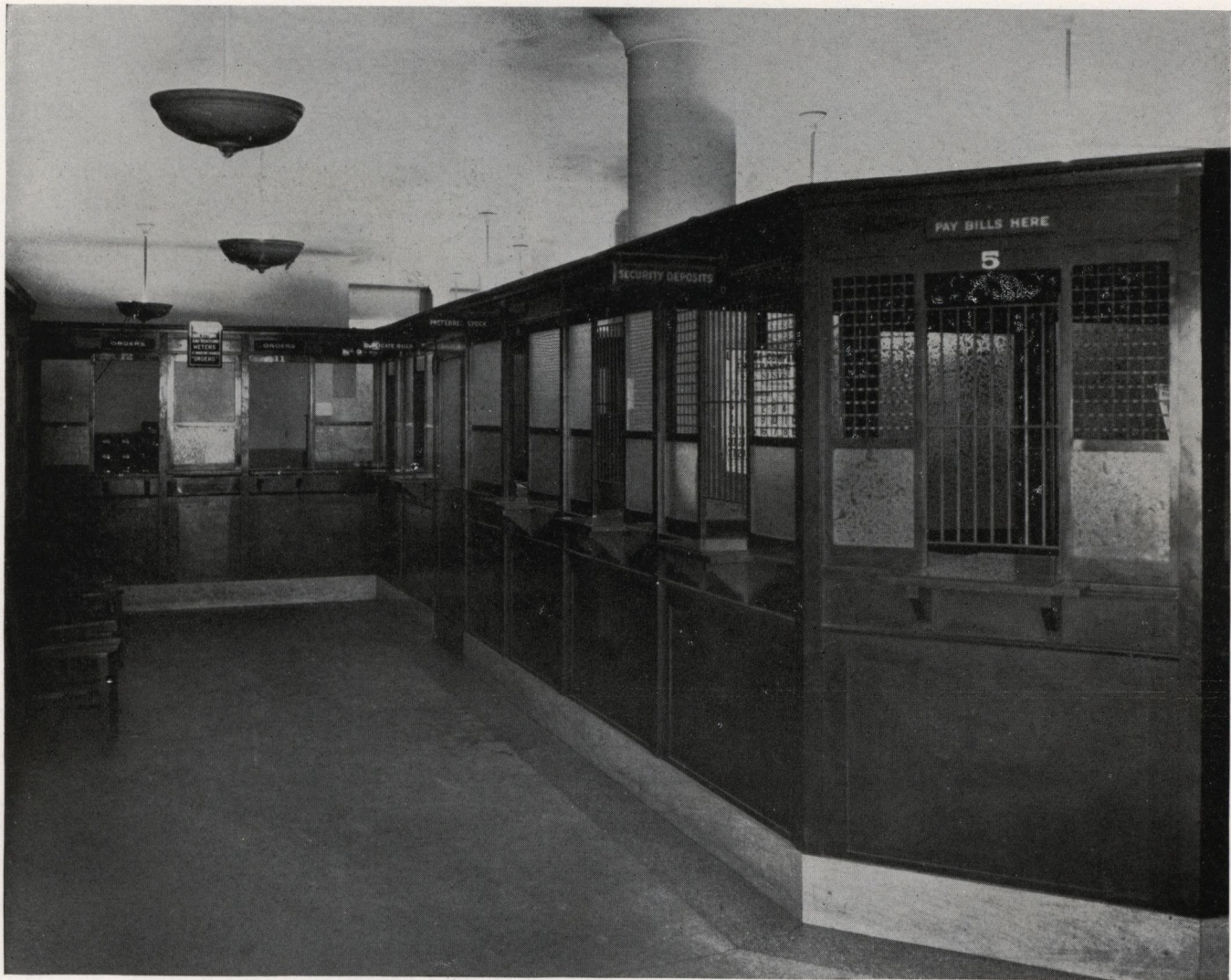
FINISH: All shades of Mahogany and Walnut, also light and dark Oak. Flat or Gloss varnish surface.

HARDWARE: All hardware is furnished in our standard dull black finish.

PORTABLE ~ SOLID ~ RIGID

E-Z-Set D Partition

THE PHENOMENAL ADAPTABILITY OF THIS DESIGN FOR OFFICE USAGE IS
PROVEN IN THIS INSTALLATION

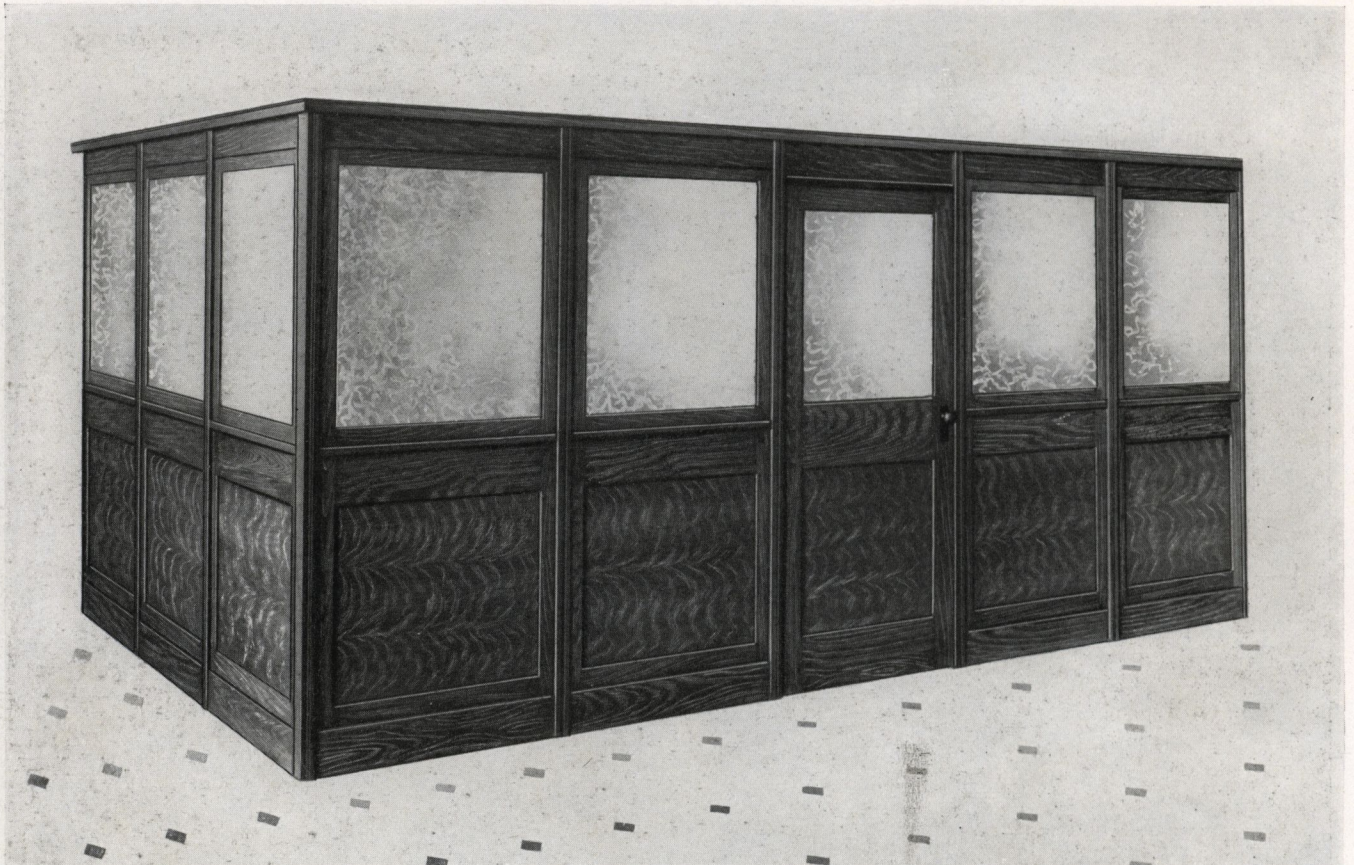


E-Z-SET D ADD-A-UNIT PARTITION CEILING HEIGHT in use in the attractive offices of the Penn Public Service Corporation, Johnstown, Pennsylvania. The partition is arranged with white marble base which adds materially to the beauty of the installation. This is only one of the many offices of this company that have been equipped satisfactorily with ADD-A-UNIT Partitions.

ADD-A-UNIT PARTITIONS

Ideal B Partition—Seven Feet High

ANOTHER CORRECT PARTITION FOR GENERAL OFFICE USAGE



IDEAL B ADD-A-UNIT PARTITION is the same in general appearance and construction as the E-Z-SET. We have, however, made some very slight modifications particularly with reference to decorative mouldings. On this model we have eliminated some of these mouldings making the design plainer, the result of which is a practical and attractive model.

The total height is 7 feet 2 inches over all. The lower part measures 3 feet 6 inches in height from floor to ledge line. The upper screen is arranged with opaque glass 34 inches high. Standardized units measure 1 foot 6 inches, 2 feet, 2 feet 6 inches, 3 feet and 3 feet 6 inches. The door openings are 3 feet wide. The door measures 2 feet 10 inches in width.

MATERIALS USED IN CONSTRUCTION OF IDEAL B ADD-A-UNIT PARTITION: Wood parts in Birch; all parts are made of selected Birch except the large panel in the lower part which is made of 3-ply construction using Mahogany veneer for outside surfaces. In Oak; all parts are plain Oak except the large panel in the lower part which is made of 3-ply construction using quarter-sawed veneer for outside surfaces.

FINISH: All shades of Mahogany and Walnut, also light and dark Oak. Flat or Gloss varnish surface.

HARDWARE: All hardware is furnished in our standard dull black finish.

PORTABLE ~ SOLID ~ RIGID

Ideal B Partition—Ceiling Height

USERS OF THIS DESIGN OFTEN EXPRESS SURPRISE THAT SUCH HIGH QUALITY PARTITIONS CAN BE SOLD ON SO REASONABLE A BASIS

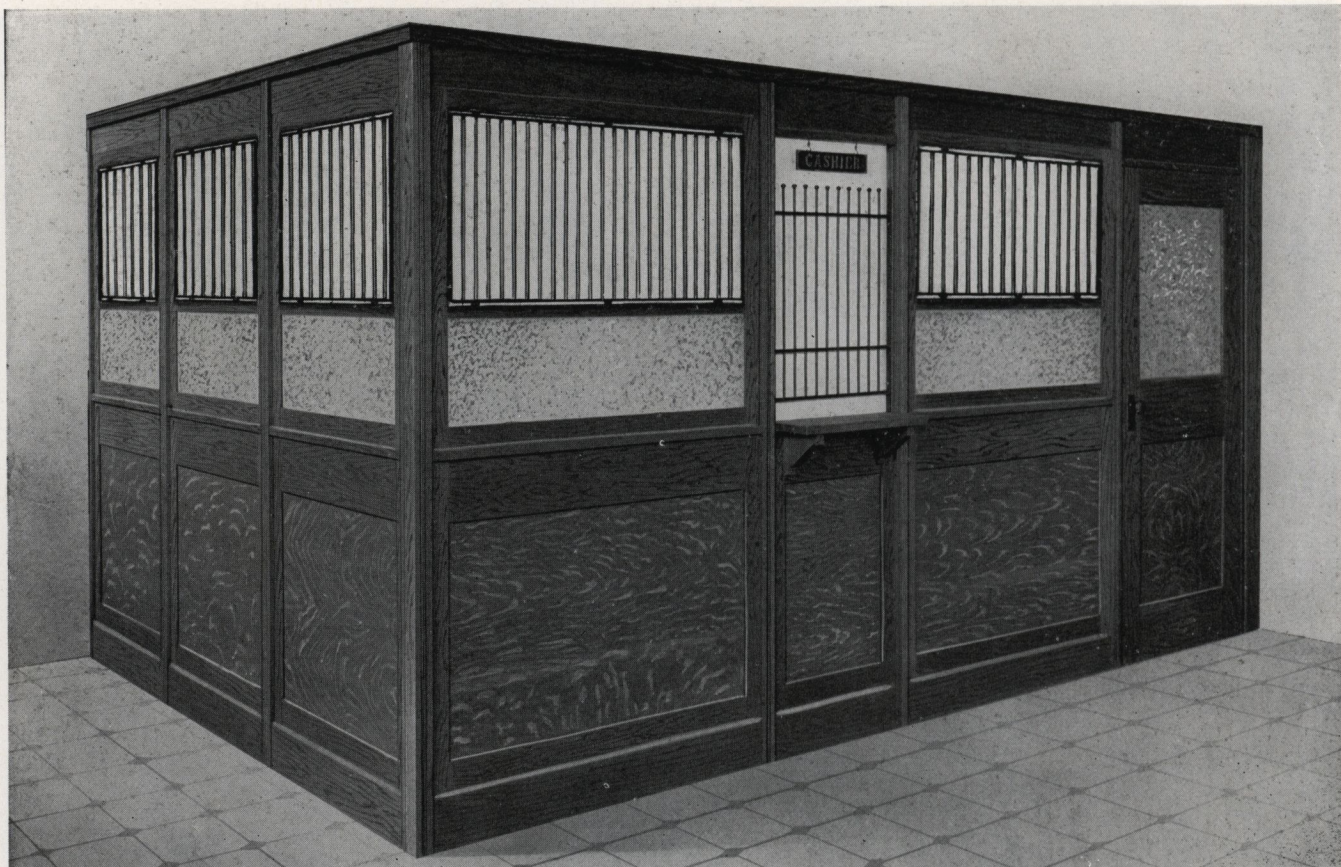


IDEAL B ADD-A-UNIT PARTITION CEILING HEIGHT is attractively shown in the illustration in use in the offices of the Eagle Ottawa Leather Company of Chicago. The upper structure is placed directly on top of the partition and extends to the ceiling. Note the fitting around the columns. It is possible with ADD-A-UNIT upper structure to arrange a perfect enclosure above standard partitions, thereby forming private offices or any complete room enclosure.

ADD-A-UNIT PARTITIONS

Ideal C Partition—Seven Feet High

ANOTHER WIDELY SOUGHT IDEAL NUMBER THAT HAS THE
STYLE BETTER OFFICES DEMAND TODAY



IDEAL C ADD-A-UNIT PARTITION is designed for use in banking rooms, financial offices, cashier's offices, etc. The upper screen is equipped with opaque glass 12 inches in height and round bar steel grille $20\frac{3}{4}$ inches high which completes the opening in the upper screen.

The total height of this model is 7 feet 2 inches over all. The lower part measures 3 feet 6 inches in height from floor to ledge line. The standardized units measure 1 foot 6 inches, 2 feet, 2 feet 6 inches, 3 feet and 3 feet 6 inches in width. The standard door openings are 3 feet in width. The door measures 2 feet 10 inches in width.

MATERIALS USED IN CONSTRUCTION OF IDEAL C ADD-A-UNIT PARTITION: Wood parts in Birch; all parts are made of selected Birch except the large panel in the lower part which is made of 3-ply construction using Mahogany veneer for outside surfaces. In Oak; all parts are plain Oak except the large panel in the lower part which is made of 3-ply construction using quarter-sawed veneer for outside surfaces.

FINISH: All shades of Mahogany and Walnut, also light and dark Oak. Flat or Gloss varnish surface.

HARDWARE: All hardware is furnished in our standard dull black finish.

PORTABLE ~ SOLID ~ RIGID

Ideal C Partition in Use

FOR REAL DIGNITY THIS MODEL IS UNSURPASSED. IT CREATES
AN ATMOSPHERE OF CHARACTER AND QUALITY

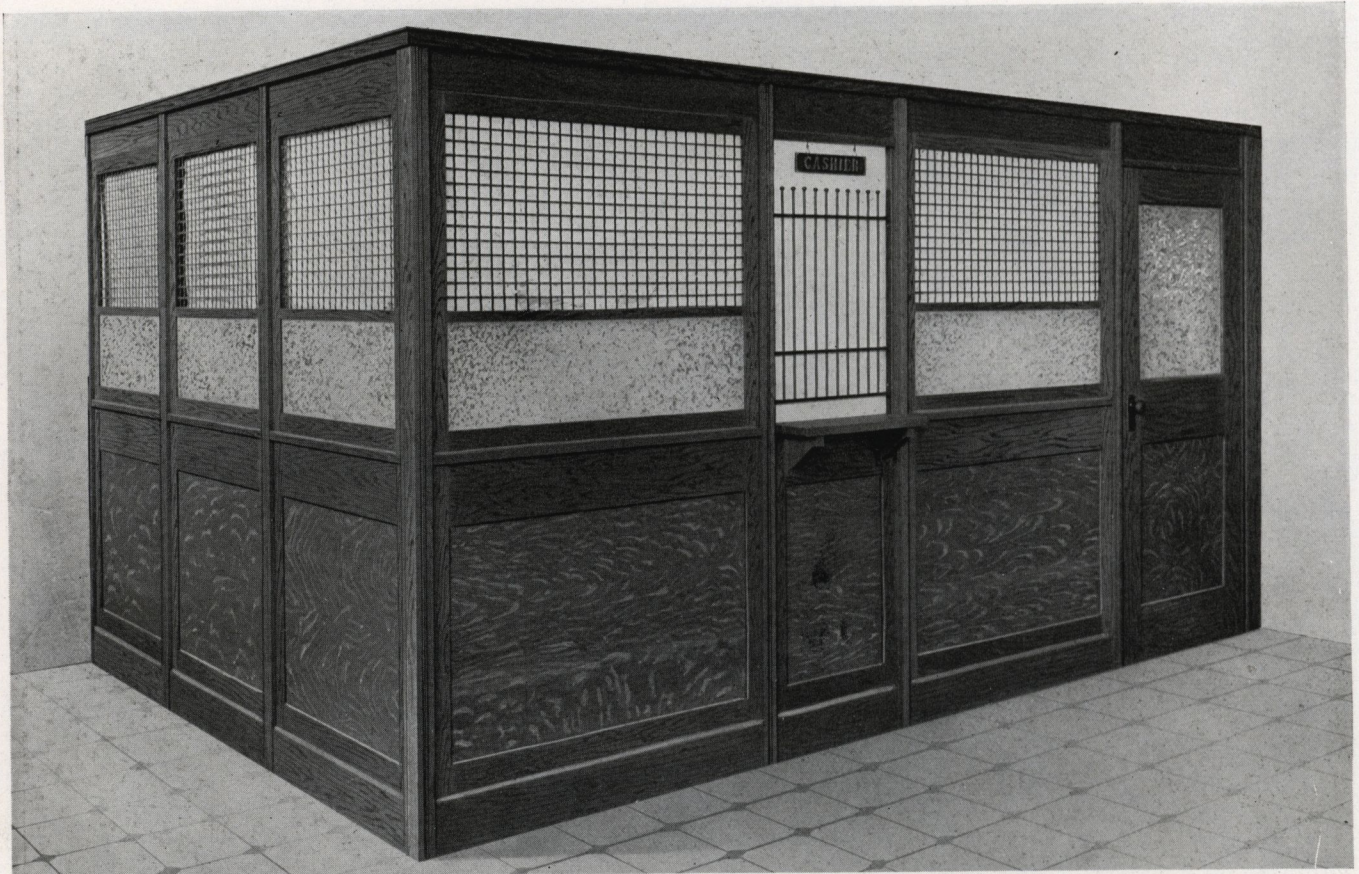


IDEAL C ADD-A-UNIT PARTITION is attractively shown in use in the Commonwealth Mortgage Company's offices, Jacksonville, Florida. "The equipment is certainly a beauty and has been pronounced one of the prettiest partition jobs in Jacksonville," was the comment after the installation had been completed.

ADD-A-UNIT PARTITIONS

Ideal D Partition—Seven Feet High

IS ANOTHER EXAMPLE OF A POPULAR MODEL IN DESIGN,
CONSTRUCTION AND FINISH



IDEAL D ADD-A-UNIT PARTITION: The upper screen of this model is arranged with opaque glass 12 inches high and flat crimped mesh measuring $21\frac{1}{2}$ inches which completes the total height of the upper screen. This combination is less expensive than the arrangement in the Ideal C Model and yet makes an artistic partition for banking rooms, financial offices and similar spaces.

The total height is 7 feet 2 inches over all. The lower part measures 3 feet 6 inches in height from floor to ledge line. The standardized units measure 1 foot 6 inches, 2 feet, 2 feet 6 inches, 3 feet and 3 feet 6 inches in width. The standard door openings are 3 feet in width. The door measures 2 feet 10 inches in width.

MATERIALS USED IN CONSTRUCTION OF IDEAL D ADD-A-UNIT PARTITION: Wood parts in Birch; all parts are made of selected Birch except the large panel in the lower part which is made of 3-ply construction using Mahogany veneer for outside surfaces. In Oak; all parts are plain Oak except the large panel in the lower part which is made of 3-ply construction using quarter-sawed veneer for outside surfaces.

FINISH: All shades of Mahogany and Walnut, also light and dark Oak. Flat or Gloss varnish surface.

HARDWARE: ALL hardware is furnished in our standard dull black finish.

PORTABLE ~ SOLID ~ RIGID

Ideal D Partition

MEETS THE EXACTING REQUIREMENTS OF DISCRIMINATE BUYERS. THIS IS ONE OF THE SATISFACTORY INSTALLATIONS MADE OF THIS DESIGN

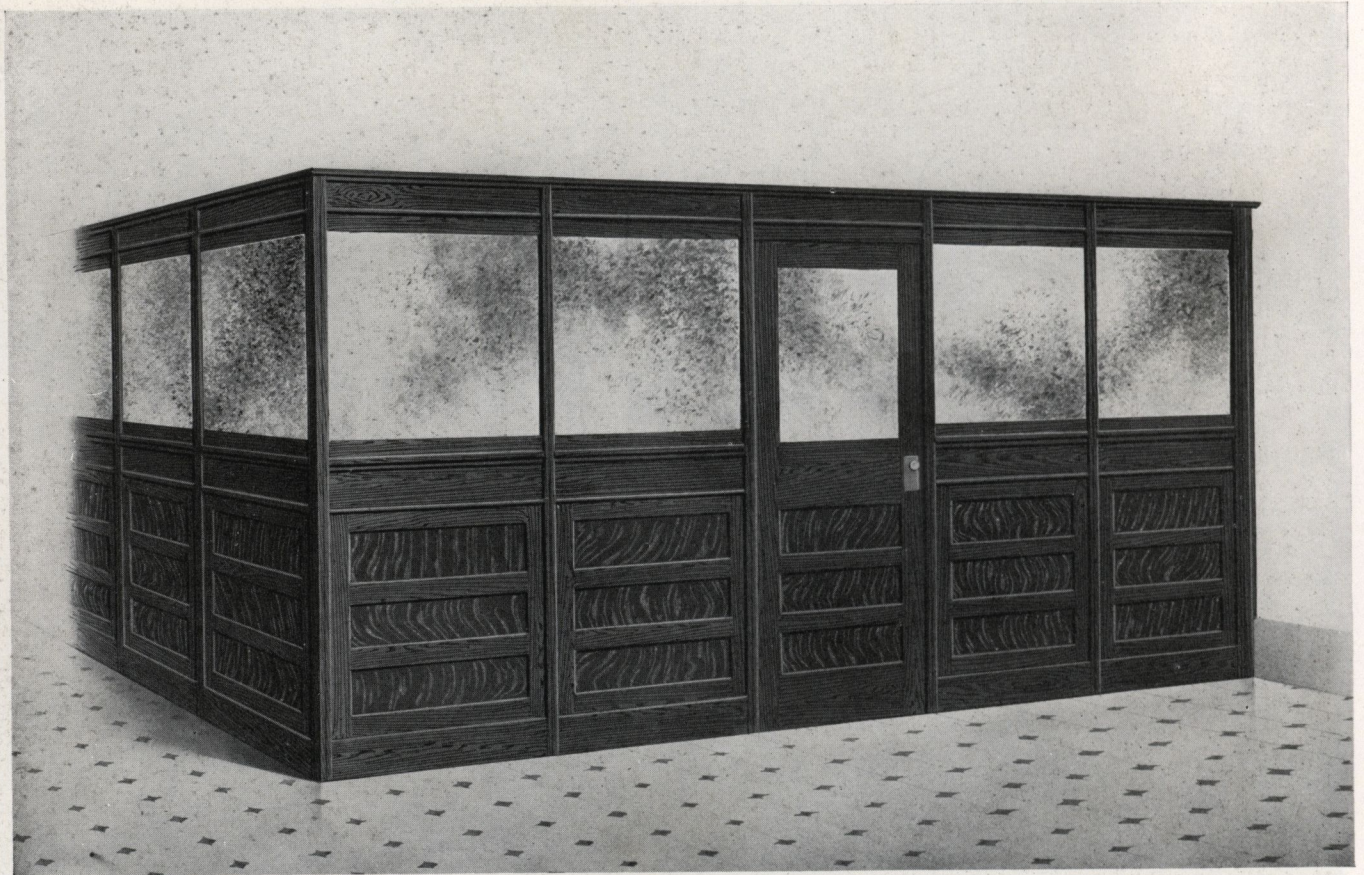


IDEAL D ADD-A-UNIT PARTITION is shown in use in a prominent West Coast loan office. This view portrays the beauty of this model. When the installation was completed the directors expressed themselves as being highly pleased with the entire equipment.

ADD-A-UNIT PARTITIONS

No. 69 B Partition—Seven Feet High

BUSINESS EFFICIENCY DEMANDS A PRACTICAL PARTITION, AND TO THIS DEMAND THERE IS ONE GOOD ANSWER—No. 69 B ADD-A-UNIT



No. 69 B ADD-A-UNIT PARTITION: This medium priced model is especially suitable for offices and spaces where a neat inexpensive partition is required. This model has enjoyed a popularity covering a great many years, and we can safely state that an installation of 69 B can be found in every important city throughout the United States. It has been used in general offices, industrial plants and factories too numerous to mention.

The total height of this model is 7 feet 1½ inches. The lower part is constructed with three small horizontal panels and measures 3 feet 9 inches from floor to ledge line. This height includes the 6 inch wood base. The upper screen is arranged with opaque glass 28 inches high. The units measure 1 foot 6 inches, 2 feet, 2 feet 6 inches, 3 feet and 3 feet 6 inches in width. Door frame is 3 feet wide. The doors are 2 feet 10 inches wide. Each unit has half posts attached to it. These are fitted with a tongue and groove and fastened together with screws.

MATERIALS USED IN CONSTRUCTION OF 69 B ADD-A-UNIT PARTITION: In Birch, the wood parts are selected Birch throughout. In Oak, plain Oak throughout.

FINISH: All shades of Mahogany and Walnut, also light and dark Oak. Flat or Gloss varnish surface.

HARDWARE: All hardware is furnished in our standard dull black finish.

No. 69 B Partition—Ceiling Height

THERE IS A GOOD SUGGESTION FOR OFFICE PARTITIONING IN THIS MODEL. IT HAS PRACTICAL ADVANTAGES AND HAS BEEN A POPULAR SELLER FOR MANY YEARS

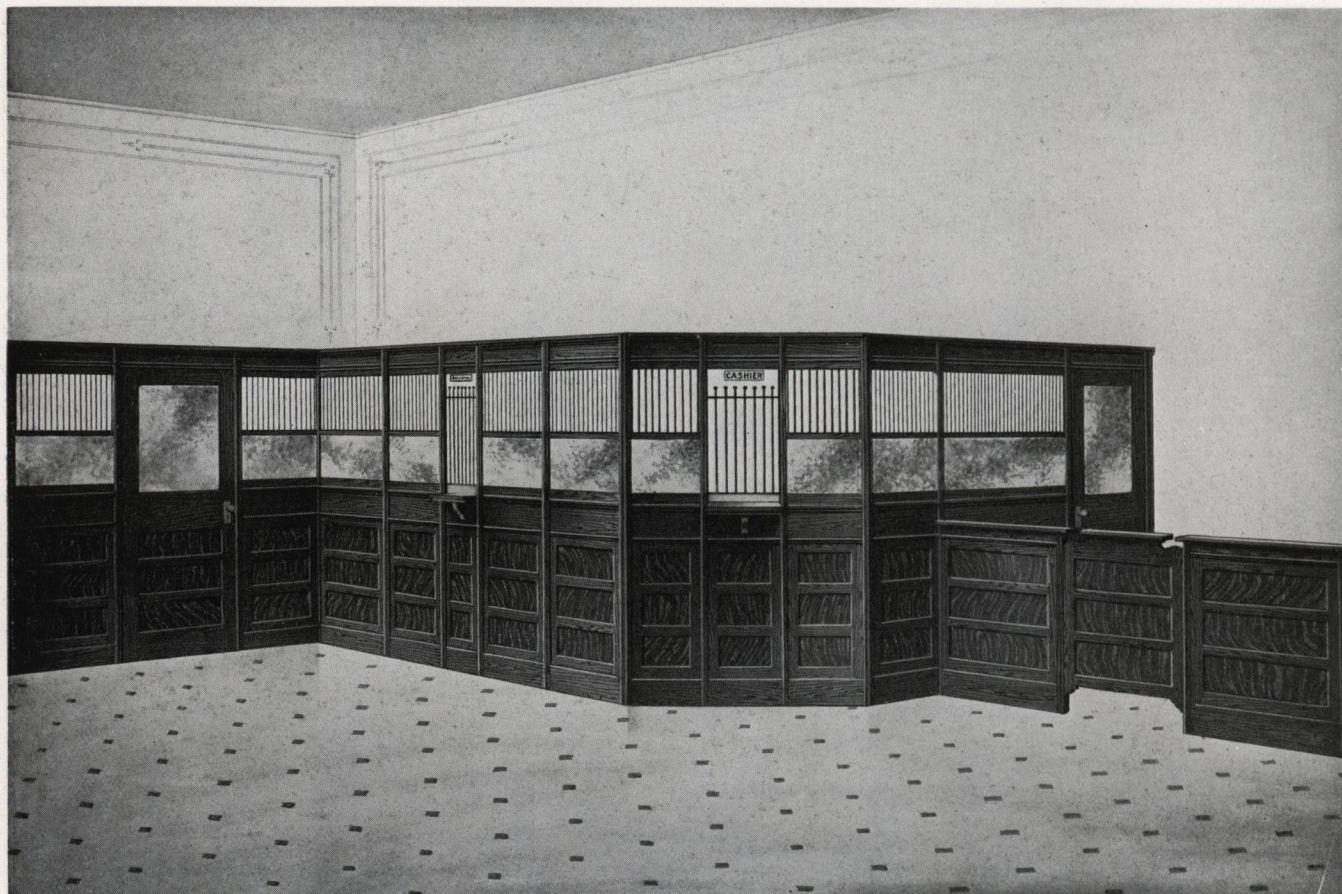


No. 69 B ADD-A-UNIT PARTITION CEILING HEIGHT is shown in use in the Garford Motor Truck Company building, Lima, Ohio. This installation is an important example of the 69 B Upper structure in use in a building where beams, sprinkler pipes and columns all had to be taken into consideration. Like most large buyers, The Garford Motor Truck Company desired uniform Partition equipment to meet their complete requirements; uniform not only in color and design but in ease of installation, flexibility, strength and cost. That's why Add-A-Unit Partitions were used.

ADD-A-UNIT PARTITIONS

No. 69 C Partition—Seven Feet High

THE ONE ECONOMICAL BANK PARTITION THAT LOOKS GOOD
AND IS GOOD. IT EMBODIES FULL VALUE TO THE USER



No. 69 C ADD-A-UNIT BANK PARTITION: This medium priced model is particularly adaptable to small banking rooms, cashier's offices and places where a neat and inexpensive partition is required.

The total height of this model is 7 feet 11½ inches. The lower part is constructed with three small horizontal panels and measures 3 feet 9 inches from floor to ledge line. This includes the wood base which is 6 inches in height. The upper part of the partition is arranged with opaque glass 12 inches in height, and round bar steel grille 14⁷/₈ inches in height, which fills in the entire upper screen. The units measure 1 foot 6 inches, 2 feet, 2 feet 6 inches, 3 feet and 3 feet 6 inches in width. The door frames are 3 feet wide. The doors are 2 feet 10 inches wide. Each unit has half posts attached to it; these are fitted with a tongue and groove and fastened together with screws.

MATERIALS USED IN CONSTRUCTION OF 69 C ADD-A-UNIT PARTITION: In Birch, the wood parts are selected Birch throughout. In Oak, the wood parts are plain Oak throughout.

FINISH: All shades of Mahogany and Walnut, also light and dark Oak. Flat or Gloss varnish surface.

HARDWARE: All hardware is furnished in our standard dull black finish.

PORTABLE ~ SOLID ~ RIGID

No. 69 C Partition

THIS MODEL IS ACKNOWLEDGED AS A GOOD VALUE. ITS INSTALLATION EFFECTIVELY FEATURES THE SPLENDID RESULTS OBTAINED IN THIS BANKING ROOM

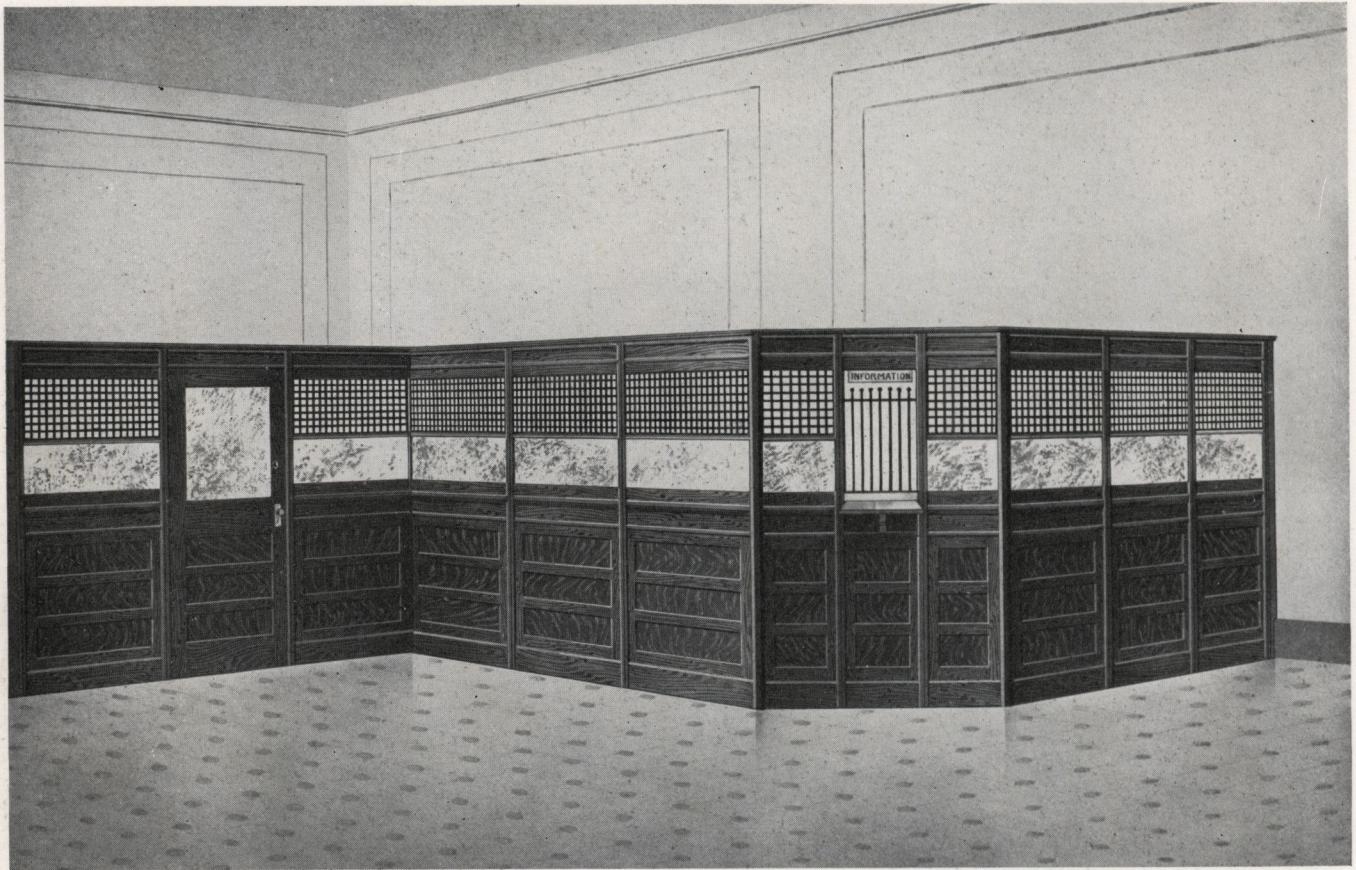


No. 69 C ADD-A-UNIT PARTITION is shown in the illustration in use in a small banking room. The effect of this installation is very pleasing, and for an inexpensive equipment we highly recommend this model for spaces of this character.

ADD-A-UNIT PARTITIONS

No. 69 D Partition—Seven Feet High

THIS IS ANOTHER ADAPTATION OF THE No. 69 PARTITION.
THIS APPEALS TO THE BANKING ROOM TRADE



No. 69 D ADD-A-UNIT BANK PARTITION: This model is identical in construction with the 69 C with the exception of the arrangement of the upper screen. In this we are showing the combination of flat crimped mesh work and glass which reduces the cost and does not detract from the general lines of the partition.

The total height is 7 feet 11½ inches. The lower part has three small horizontal panels and measures 3 feet 9 inches from floor to ledge line including the wood base which is 6 inches high. The flat crimped mesh panel in the upper screen is 14¾ inches high. The glass is 12 inches in height.

MATERIALS USED IN THE CONSTRUCTION: In Birch, the wood parts are selected Birch throughout. In Oak, the wood parts are plain Oak throughout.

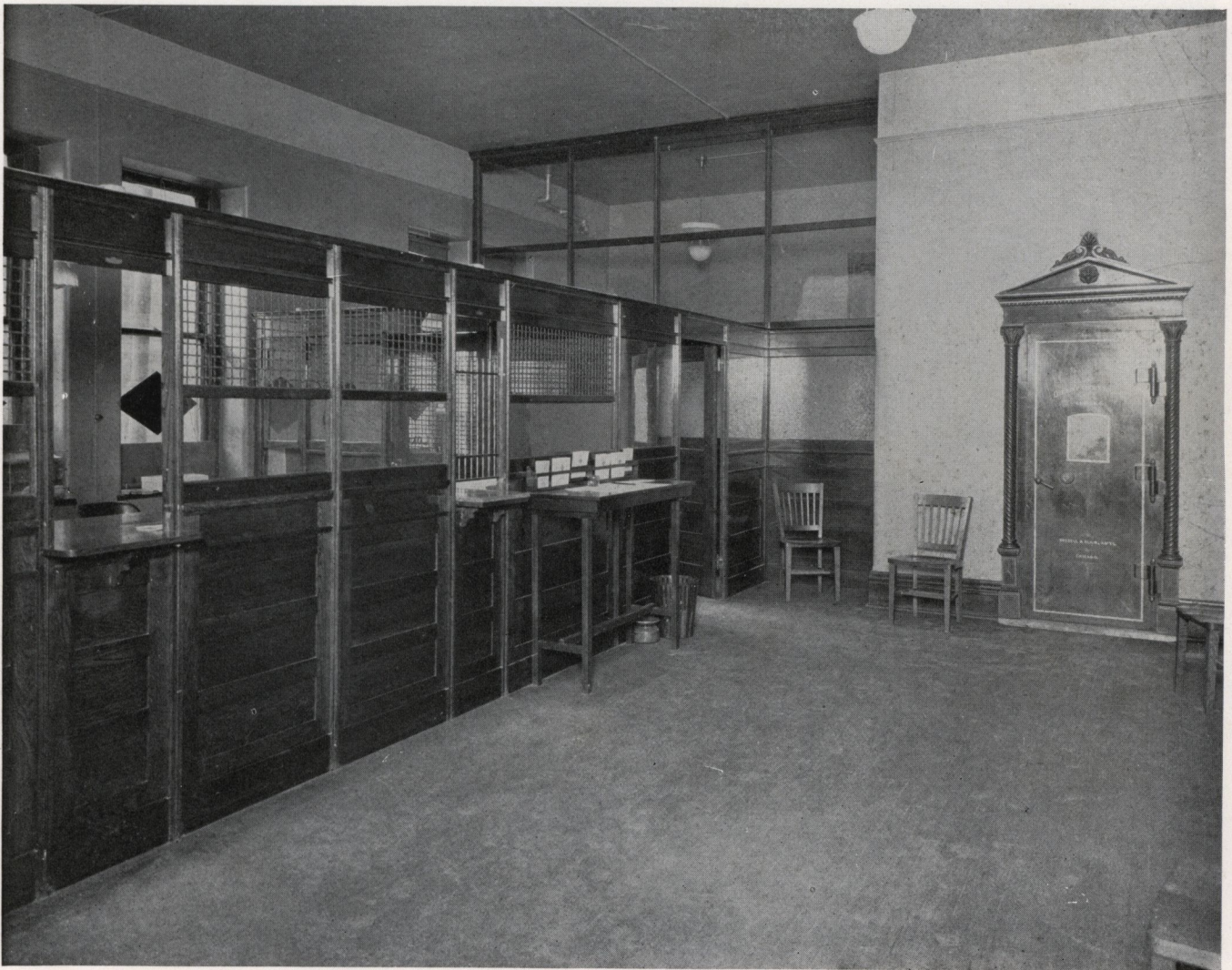
FINISH: All shades of Mahogany and Walnut, also light and dark Oak. Flat or Gloss varnish surface.

HARDWARE: All hardware is furnished in our standard dull black finish.

PORTABLE ~ SOLID ~ RIGID

No. 69 D Partition

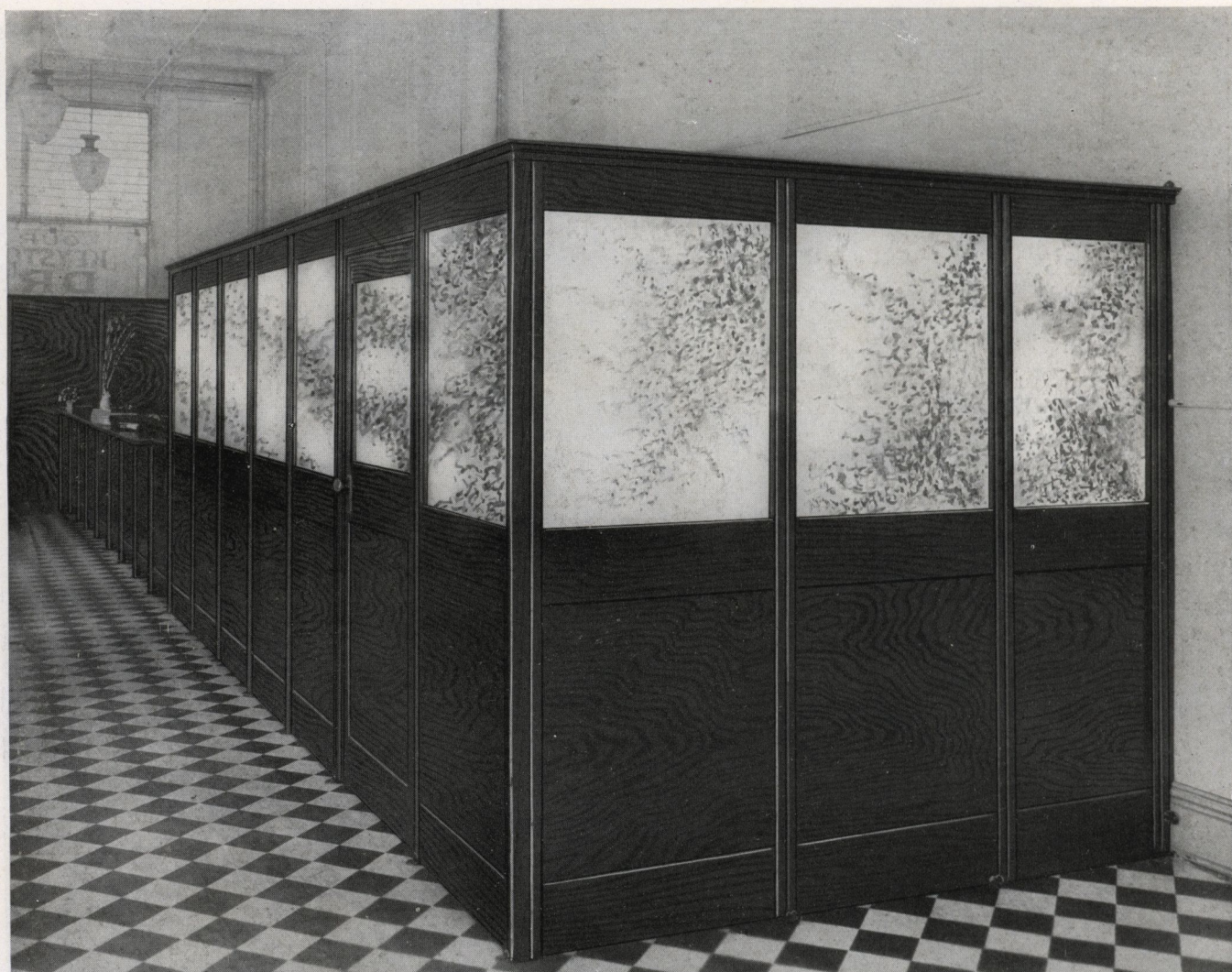
A MOST PLEASING ARRANGEMENT OF THE 69 D PARTITION—CLEAN CUT AND ATTRACTIVE IS THE IMPRESSION THIS STAUNCHLY BUILT No. 69 D PARTITION GIVES



No. 69 D ADD-A-UNIT PARTITION is attractively shown in the illustration in use in a financial office. Note the private office in the rear of the room. This demonstrates the possibility of arranging a decidedly attractive room with an inexpensive partition.

Leader B Partition—Seven Feet High

THE RECEPTION ACCORDED THE ENTREE OF THE LEADER MODEL HAS BEEN NOTHING SHORT OF SENSATIONAL. A MODERN PARTITION FOR THE MODERN OFFICE



LEADER B ADD-A-UNIT PARTITION has been designed to meet the demand for a partition of standard height which is recognized as 7 feet, having a plain panel in the lower part, and for spaces where price is an important factor. It is inexpensive, decidedly attractive and practical and will finish beautifully in all of the shades to match modern office furniture.

The total height of this partition is 7 feet 1 inch. The lower part measures 3 feet 9 inches to glass line. The upper part from glass line to top of cornice measures 3 feet 4 inches, making up the total height of the partition. The upper screen is arranged with opaque glass either Florentine or Maze pattern, 34 inches high. The units measure 1 foot 6 inches, 2 feet, 2 feet 6 inches, 3 feet and 3 feet 6 inches. The door frames are 3 feet wide. The doors are 2 feet 10 inches wide.

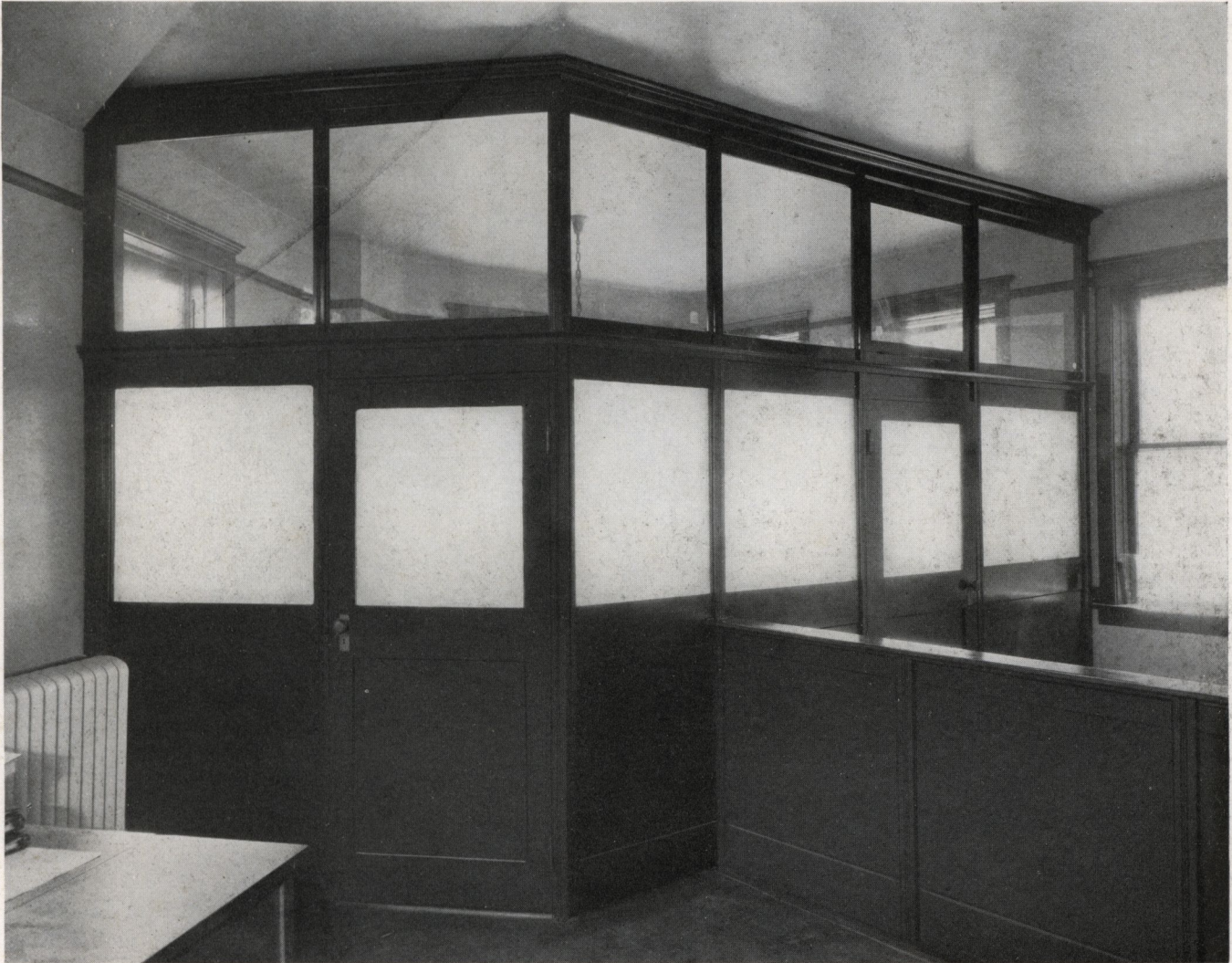
MATERIALS USED IN CONSTRUCTION OF LEADER B ADD-A-UNIT PARTITION: In Birch; selected Birch throughout, the large panel in the lower part is 3-ply Birch veneer. In Oak; plain Oak throughout, the large panel in the lower part is 3-ply plain Oak veneer.

FINISH: All shades of Mahogany and Walnut, also light and dark Oak. Flat or Gloss varnish surface.

HARDWARE: All hardware is furnished in our standard dull black finish.

Leader B Partition—Ceiling Height

FROM A VIEWPOINT OF USEFULNESS AND DIGNITY THERE IS NO PARTITION MORE APPROPRIATE FOR SPACES WHERE SIMPLICITY OF CONSTRUCTION IS DESIRED THAN THE LEADER

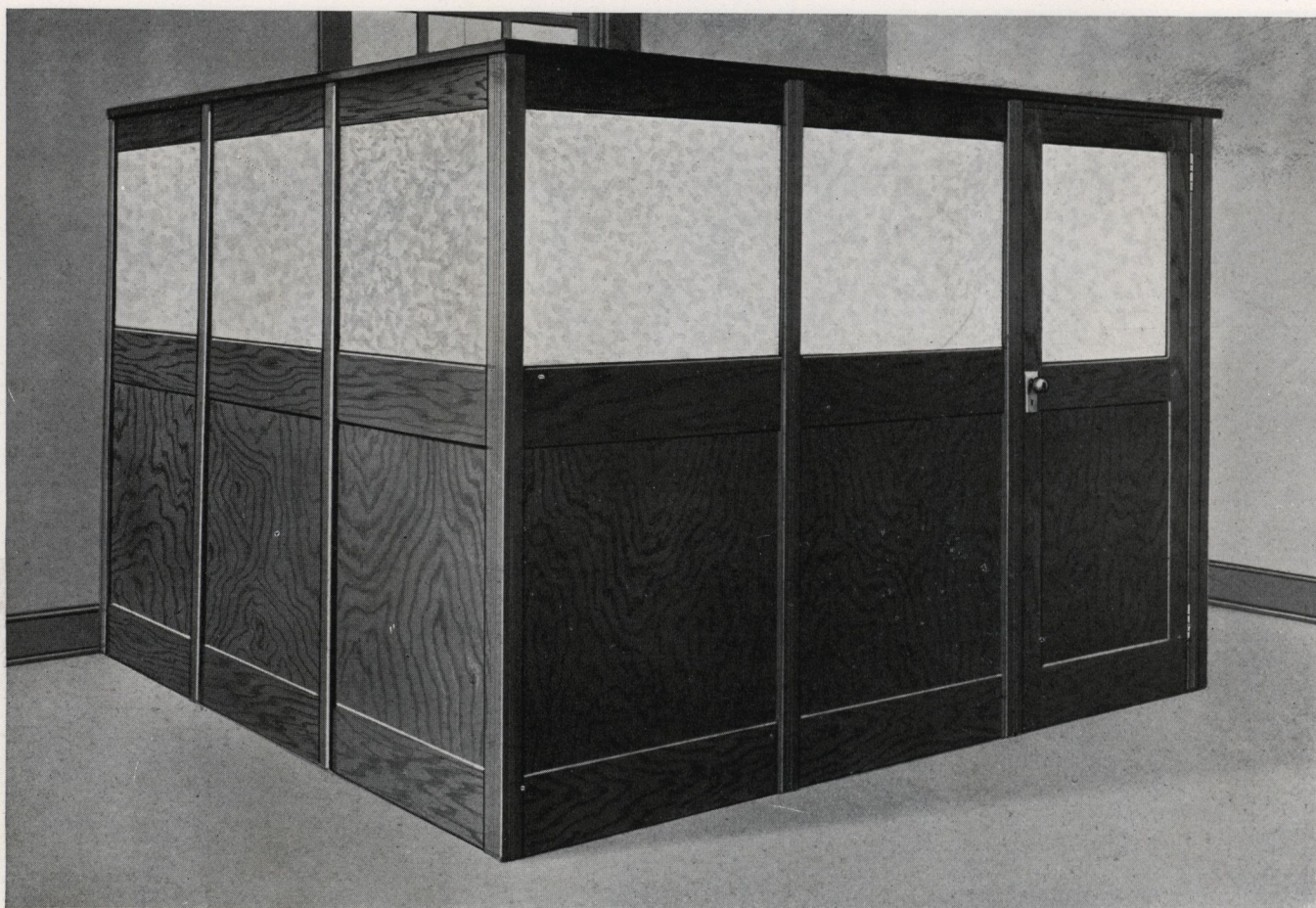


LEADER B ADD-A-UNIT PARTITION CEILING HEIGHT is shown in illustration in a very recent Chicago installation, enclosing a private office from floor to ceiling. For commercial and industrial buildings the Leader partition meets every requirement.

ADD-A-UNIT PARTITIONS

No. 80 B Partition—Six Feet Seven Inches High

DESIGNED PRIMARILY FOR FACTORY USAGE BUT MANY INSTALLATIONS IN COMMERCIAL AND PROFESSIONAL OFFICES ESTABLISHED ITS POPULARITY FOR THESE SPACES ALSO



No. 80 B ADD-A-UNIT PARTITION: This model was originally designed for use in factories, warehouses and places requiring a moderately priced partition. It is the lowest priced model that we are featuring in our line.

The complete height is 6 feet $7\frac{1}{4}$ inches. The height from floor to glass line is 48 inches. The wood base measures 8 inches in height. The upper part from glass line to top of cornice is $31\frac{1}{4}$ inches high making up the total height of 6 feet $7\frac{1}{4}$ inches. The units measure 1 foot 6 inches, 2 feet, 2 feet 6 inches, 3 feet and 3 feet 6 inches in width. Door openings are 3 feet wide; doors 2 feet 10 inches wide.

MATERIALS USED IN CONSTRUCTION OF No. 80 PARTITION: The wood parts are made of Poplar with the exception of the large panel in the lower part which is selected Birch. In Oak, plain Oak throughout.

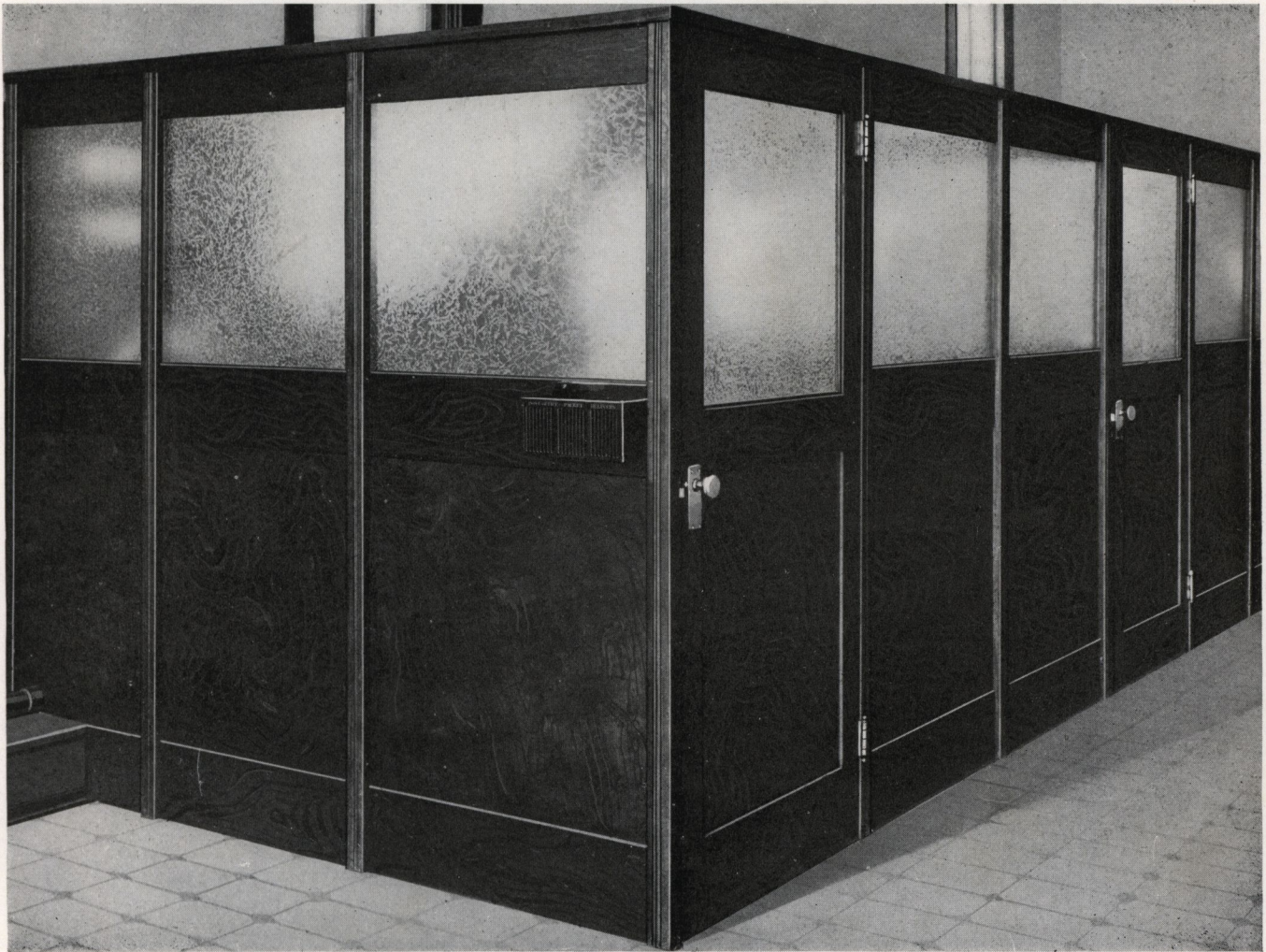
FINISH: All shades of Mahogany and Walnut, also light and dark Oak. Flat or Gloss varnish surface.

HARDWARE: All hardware is furnished in our standard dull black finish.

PORTABLE ~ SOLID ~ RIGID

No. 80 B Partition

BUILT EXPRESSLY FOR THOSE DESIRING A PARTITION AT A LOW COST YET DURABLE.
IN OFFICES LARGE AND SMALL THIS MODEL HAS GIVEN SATISFACTION

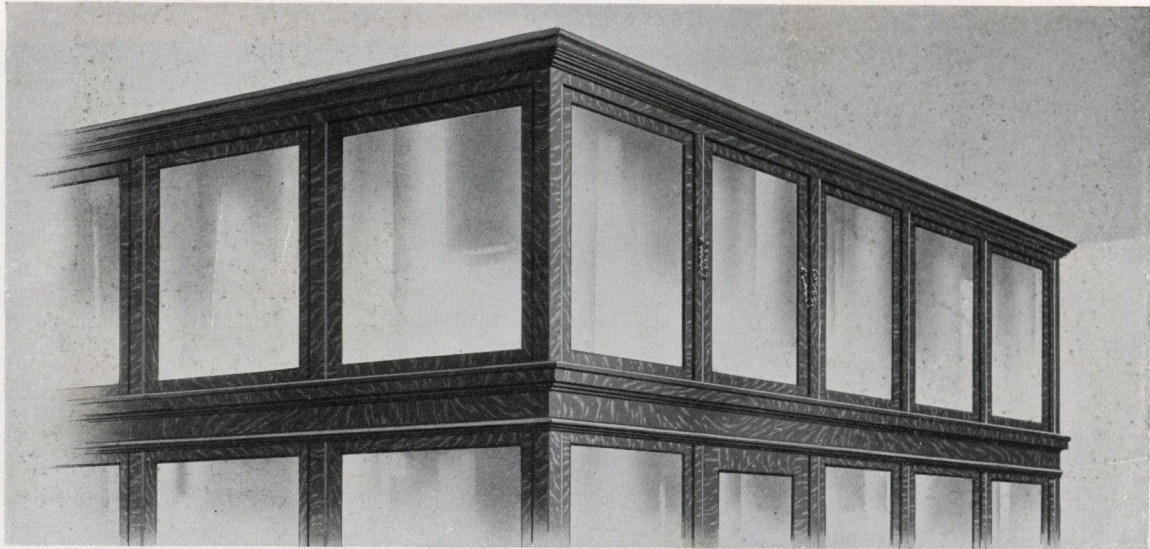


No. 80 B ADD-A-UNIT PARTITION is attractively shown in use in the offices of the Minneapolis Realty Company, which demonstrates the possibilities there are for using a low priced partition to make up an attractive office.

ADD-A-UNIT PARTITIONS

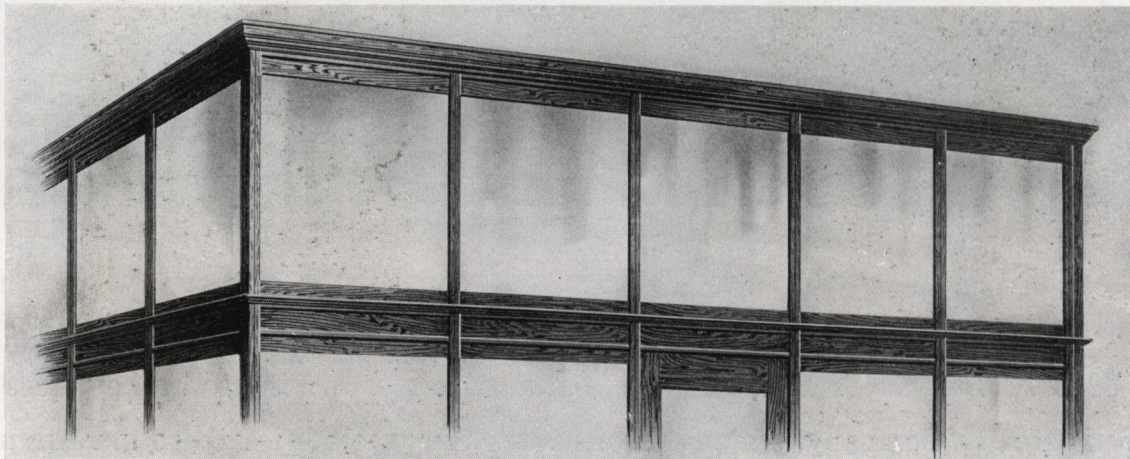
Add-A-Unit Upper Structure

FURNISHED FOR SPACE BETWEEN 7 FOOT PARTITION AND CEILING



ARISTOCRAT ADD-A-UNIT UPPER STRUCTURE: This upper structure harmonizes with the Aristocrat ADD-A-UNIT Partition. It rests directly on top of the partition 7 feet high and extends to the ceiling. It can be supplied in heights to accommodate any ceiling. Where a building is constructed with beam ceilings, the upper structure is fitted by scribing. We can also arrange for ornamental columns, heating pipes, sprinkler systems and any ceiling condition that exists.

CONSTRUCTION OF WOOD PARTS: The wood parts are made of selected Birch or of quarter-sawed Oak throughout. The glass is clear double strength or opaque in Florentine or Maze patterns.



ADD-A-UNIT UPPER STRUCTURE FOR PEERLESS, E-Z-SET, IDEAL, LEADER and No. 80 PARTITION MODELS. This upper structure is designed to use with the five ADD-A-UNIT Partition models listed above. It is constructed with a divided post connecting the units. It can be supplied in heights to accommodate varying ceiling heights.

Wood parts are selected Birch or plain Oak throughout. Glass clear or opaque in Florentine or Maze patterns.

Add-A-Unit Coupon and Telephone Booth

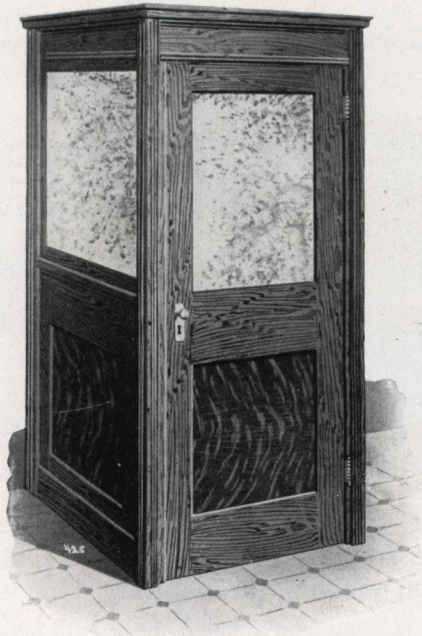
These ADD-A-UNIT Booths can be supplied with 4 sides to set away from the wall; or 3 sides attached to the wall; also, 2 sides where they are placed in a corner. They are semi-sound proof. The glass is set in felt.



ARISTOCRAT ADD-A-UNIT BOOTH is made of units measuring 3 feet in width including the door unit. The top is enclosed with roof in one panel. Total height 7 feet 2 inches. Construction same as Aristocrat Partition.



E-Z-SET ADD-A-UNIT BOOTH is made of units measuring 3 feet in width including the door unit. The top is enclosed with roof in one panel. Height 7 feet 2 inches. Construction same as E-Z-Set Partition.



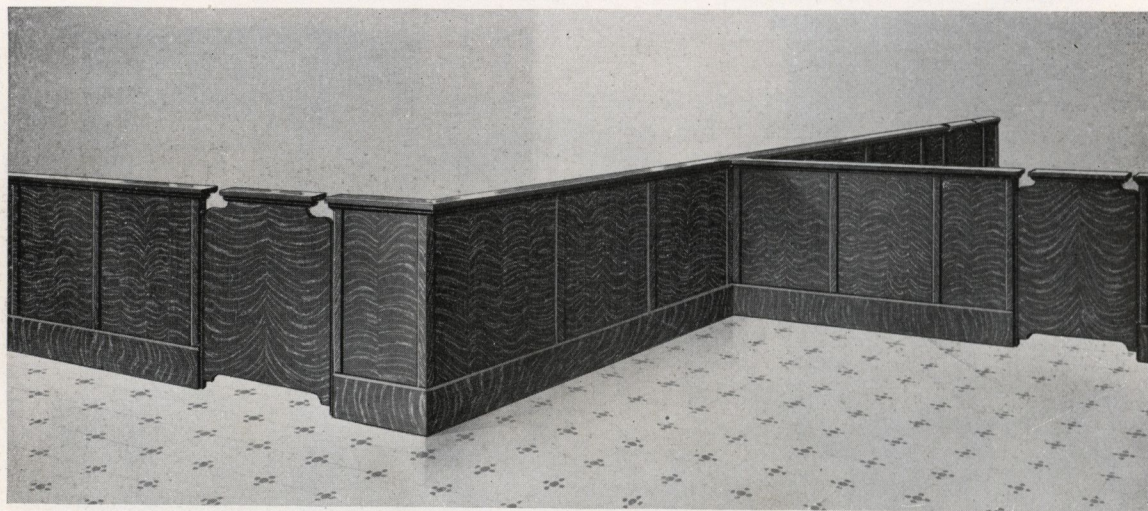
IDEAL ADD-A-UNIT BOOTH, is made of units measuring 3 feet in width including the door unit. The top is enclosed with roof in one panel. Height 7 feet 2 inches. Construction same as Ideal Partition.



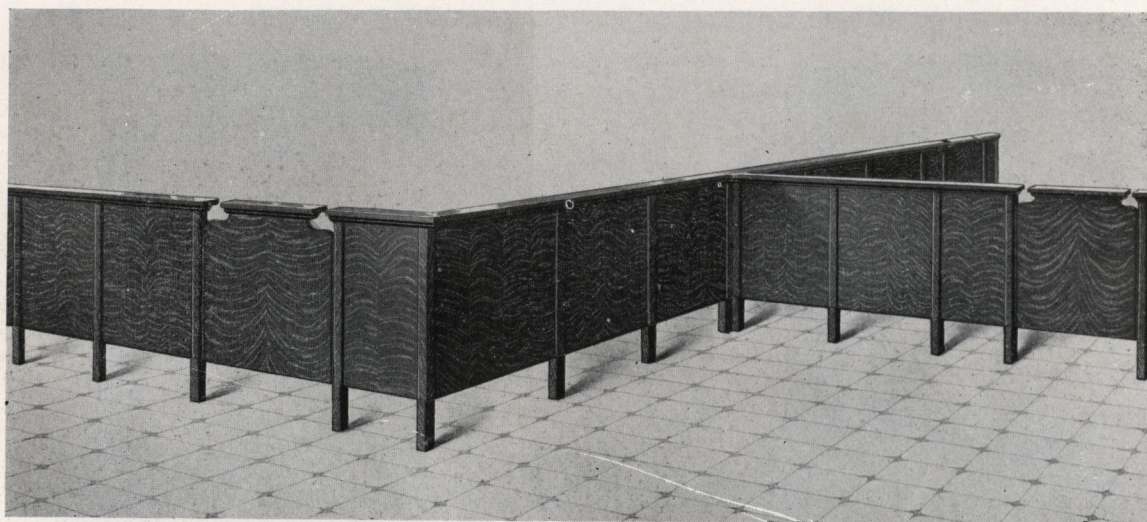
No. 69 ADD-A-UNIT BOOTH, is made of units measuring 3 feet in width including door unit. Total height 7 feet 11½ inches. Construction same as No. 69 B Partition.

ADD-A-UNIT PARTITIONS

Aristocrat Railing



ARISTOCRAT ADD-A-UNIT RAILING harmonizes with the various Aristocrat Partitions. The height is 42 inches. The top ledge is $1\frac{3}{4}$ inches thick; widths from 6 to 12 inches. We supply 6 inch ledges unless otherwise specified. The wood base is 8 inches high. The gates are equipped with double acting hinges and measure 2 feet 6 inches in width. The standard railing units measure from 1 foot 6 inches to 3 feet 6 inches in width in 6 inch multiples.

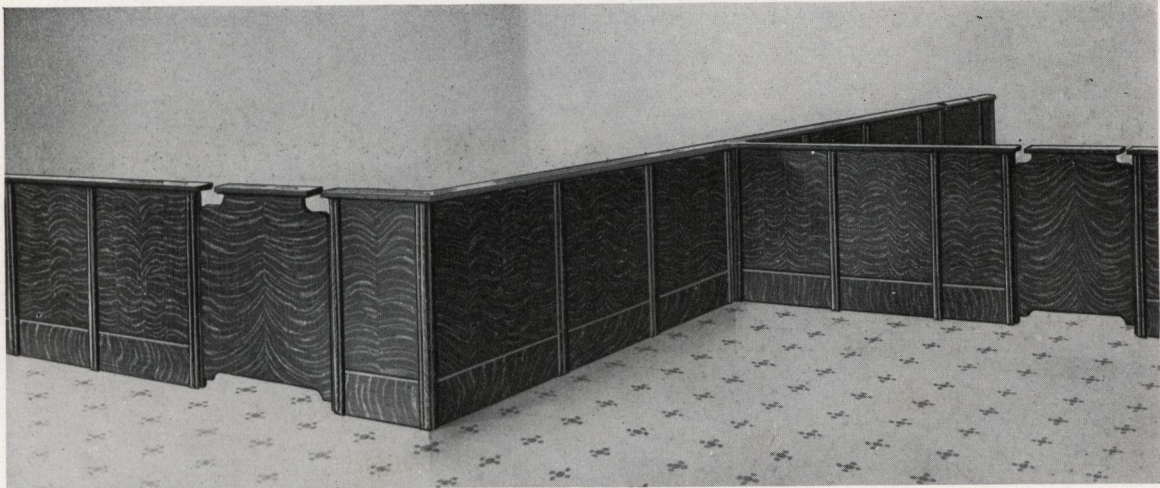


ARISTOCRAT "S" SANITARY ADD-A-UNIT RAILING is also used with Aristocrat Partition. The height is 42 inches; the top ledge $1\frac{3}{4}$ inches thick; widths from 6 to 12 inches. We supply 6 inch ledges unless otherwise specified. The wood base is eliminated making the Sanitary type so much desired in office equipment at the present time.

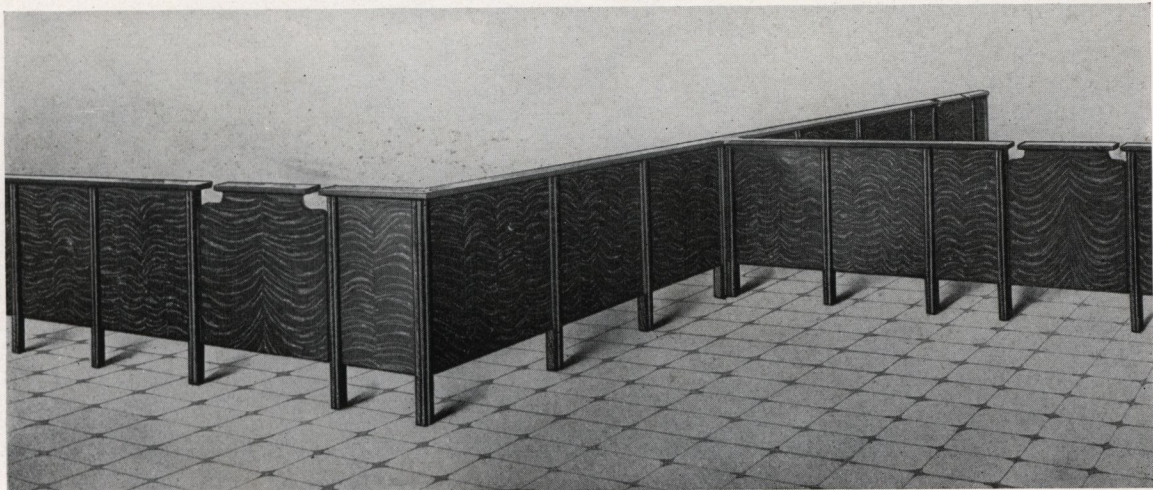
MATERIALS USED IN BOTH DESIGNS—The large panel is made of 5-ply construction veneer. The wood parts are Birch with Mahogany veneer panel, or quarter-sawed Oak throughout.

FINISH: All shades of Mahogany and Walnut, also light and dark Oak. Flat or Gloss varnish surface.

Peerless Railing



PEERLESS ADD-A-UNIT RAILING harmonizes with the Peerless Partition. The height is 42 inches; the top ledge $1\frac{3}{4}$ inches thick; widths from 6 to 12 inches. We supply 6 inch ledges unless otherwise specified. The wood base is 8 inches high. The gates are equipped with double acting hinges and measure 2 feet 6 inches in width. The standard railing units measure 1 foot 6 inches to 3 feet 6 inches in width in 6 inch multiples.



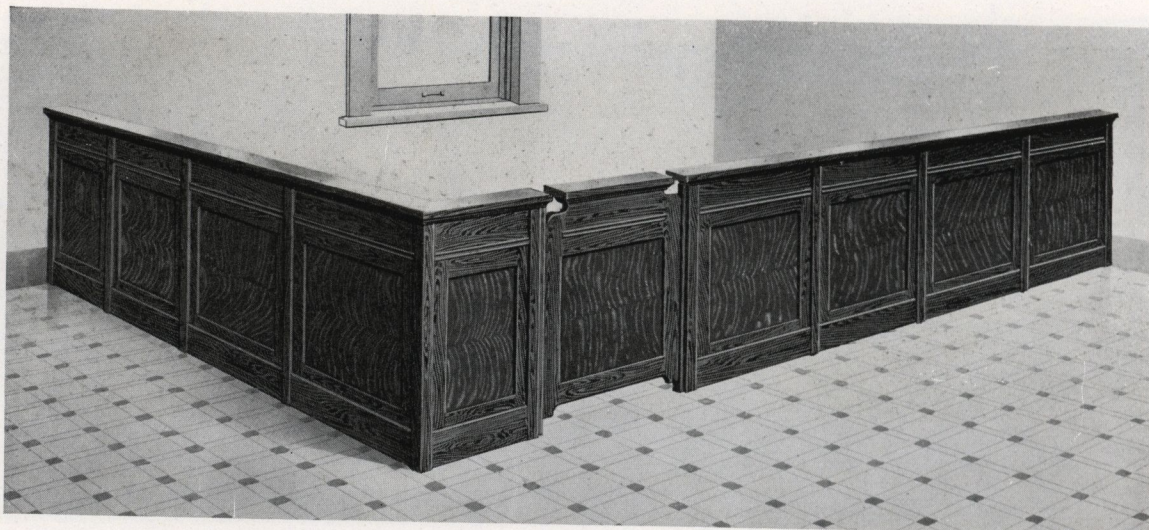
PEERLESS "S" SANITARY RAILING is also used with Peerless Partition. The height is 42 inches; the top ledge $1\frac{3}{4}$ inches thick; widths from 6 to 12 inches. We supply 6 inch ledges unless otherwise specified. The wood base is eliminated making the Sanitary type.

MATERIALS USED IN CONSTRUCTION OF BOTH DESIGNS—The wood parts are Birch with Mahogany veneer panel, or plain Oak with quarter sawed veneer panel.

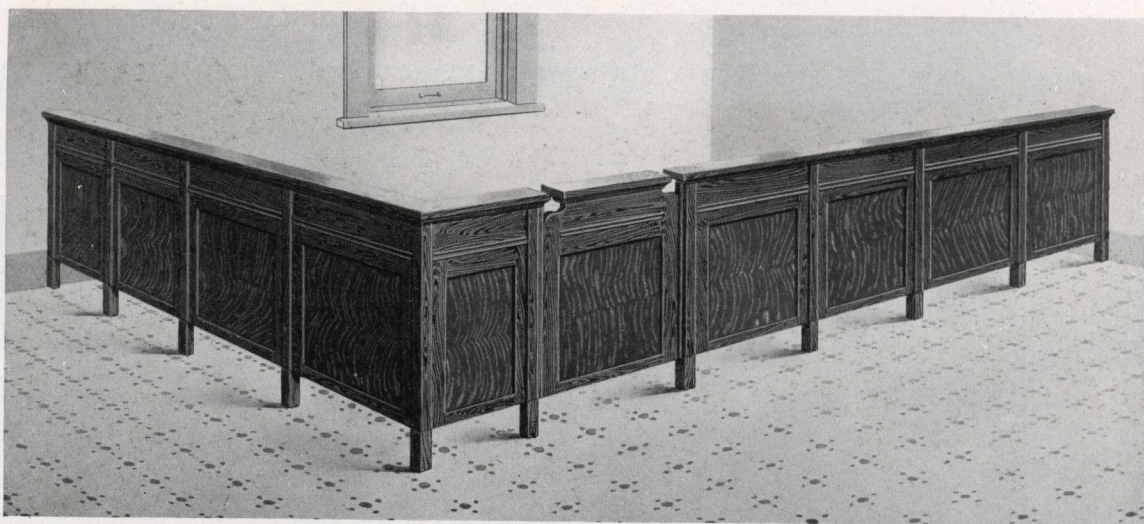
FINISH: All shades of Mahogany and Walnut, also light and dark Oak. Flat or Gloss varnish surface.

ADD-A-UNIT PARTITIONS

E-Z-Set Railing



E-Z-SET ADD-A-UNIT RAILING harmonizes with the E-Z-Set Partition. The height is 42 inches; the top ledge $1\frac{1}{8}$ inches thick; widths 6 to 12 inches. We supply 6 inch ledges unless otherwise specified. The wood base is 6 inches high. The gates are equipped with double acting hinges and measure 2 feet 6 inches in width. The standard railing units measure from 1 foot 6 inches to 3 feet 6 inches in width in 6 inch multiples.

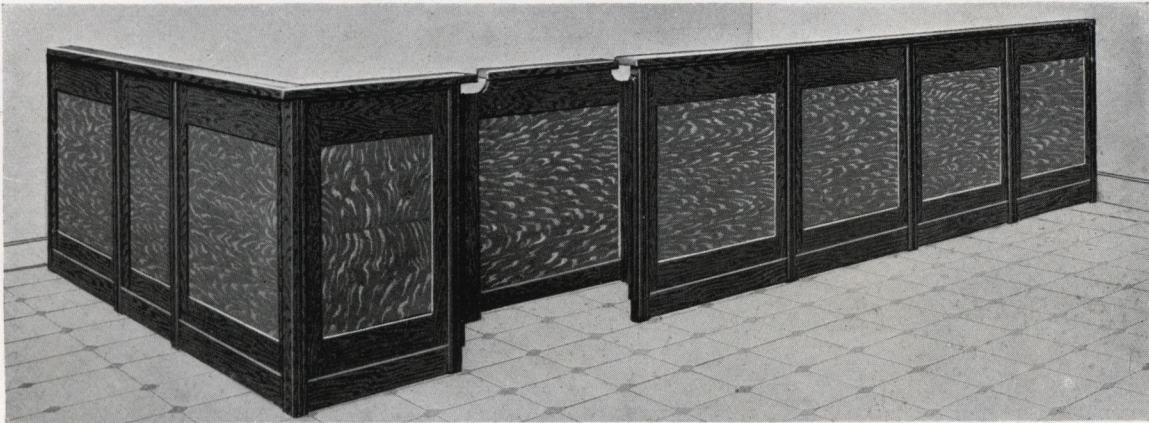


E-Z-SET "S" SANITARY RAILING is also used with E-Z-Set Partition. The height is 42 inches; top ledge $1\frac{1}{8}$ inches thick; widths 6 to 12 inches. We supply 6 inch ledges unless otherwise specified. The wood base is eliminated making the Sanitary type.

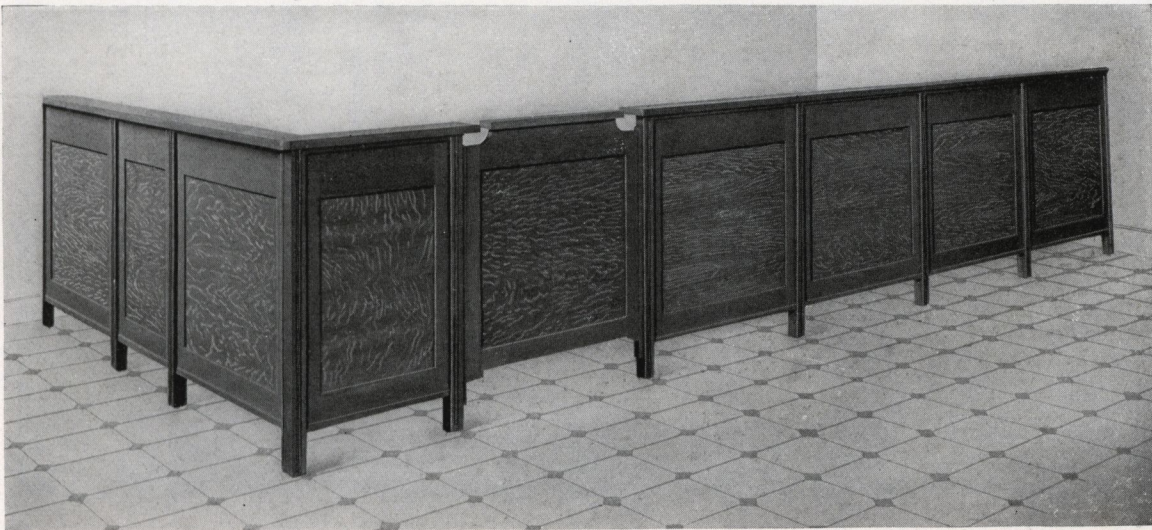
MATERIALS USED IN CONSTRUCTION OF BOTH DESIGNS—The large panel is made of 3-ply construction veneer. The wood parts are Birch with Mahogany veneer panel, or Plain Oak with quarter-sawn veneer panel.

FINISH: All shades of Mahogany and Walnut, also light and dark Oak. Flat or Gloss varnish surface.

Ideal Railing



IDEAL ADD-A-UNIT RAILING harmonizes with the Ideal Partition. The height is 42 inches; the top ledge $1\frac{1}{8}$ inches thick; widths 6 to 12 inches. We supply 6 inch ledge unless otherwise specified. The wood base is 6 inches high. The gates are equipped with double acting hinges and measure 2 feet 6 inches in width. The standard railing units measure from 1 foot 6 inches to 3 feet 6 inches in width in 6 inch multiples.



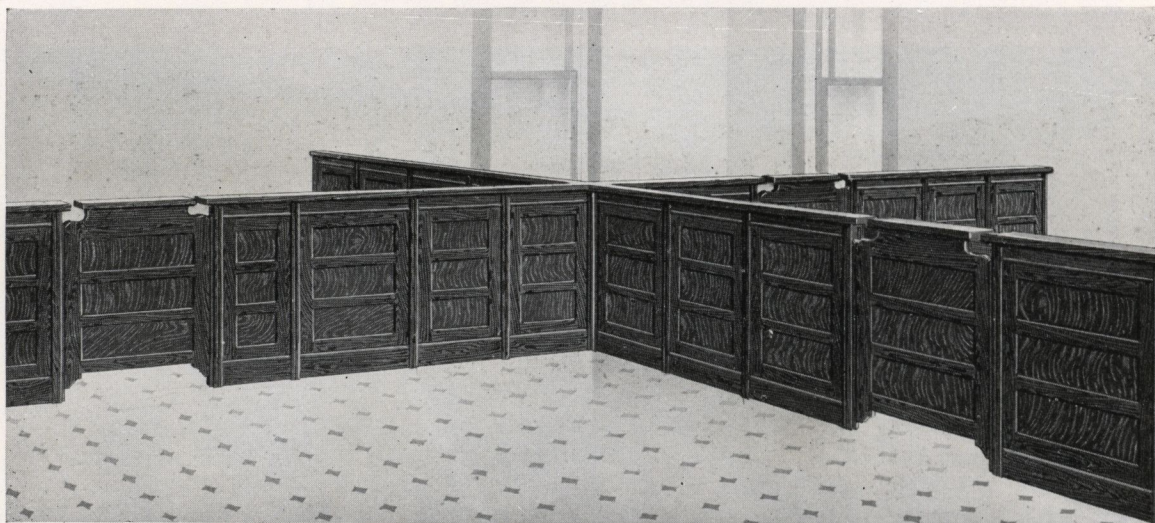
IDEAL "S" SANITARY ADD-A-UNIT RAILING is also used with the Ideal Partition. The height is 42 inches; the top ledge $1\frac{1}{8}$ inches thick; widths from 6 to 12 inches. We supply 6 inch ledges unless otherwise specified. The wood base is eliminated making the Sanitary type.

MATERIALS USED IN CONSTRUCTION OF BOTH DESIGNS—The large panel is made of 3-ply construction veneer. The wood parts are Birch with Mahogany veneer panel, or Plain Oak with quarter-sawed veneer panel.

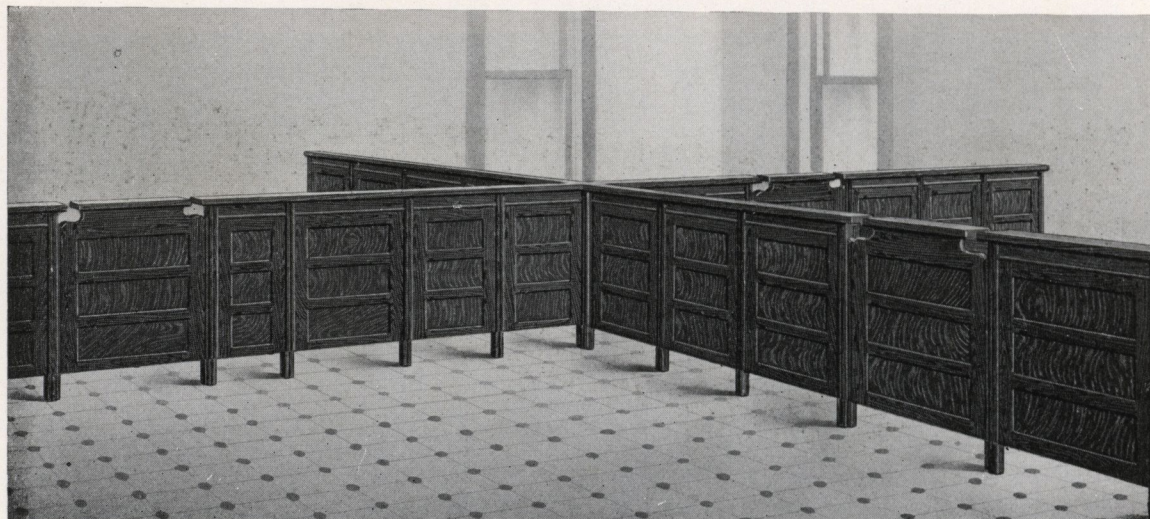
FINISH: All shades of Mahogany and Walnut, also light and dark Oak. Flat or Gloss varnish surface.

ADD-A-UNIT PARTITIONS

No. 69 Railing



No. 69 ADD-A-UNIT RAILING harmonizes with the No. 69 ADD-A-UNIT Partition design. The height is 40 inches; the top ledge $\frac{7}{8}$ inch thick; widths 6 to 12 inches. We supply 6 inch ledges unless otherwise specified. The wood base is 6 inches high. The gates are equipped with double acting hinges and measure 2 feet 6 inches in width. The standard railing units measure from 1 foot 6 inches to 3 feet 6 inches in width in 6 inch multiples.



No. 69 "S" SANITARY ADD-A-UNIT RAILING is also used with No. 69 Partition. The height is 40 inches; the top ledge $\frac{7}{8}$ inch thick; widths 6 to 12 inches. We supply 6 inch ledges unless otherwise specified. The wood base is eliminated making the Sanitary type. The gates are equipped with double acting hinges and measure 2 feet 6 inches in width. The standard railing units measure from 1 foot 6 inches to 3 feet 6 inches in width in 6 inch multiples.

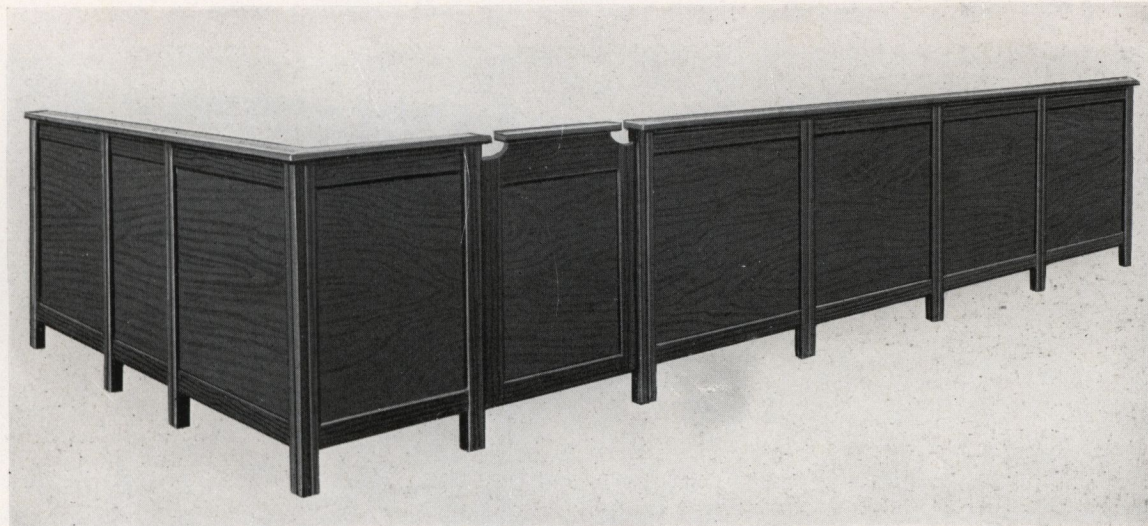
MATERIALS USED IN CONSTRUCTION OF BOTH DESIGNS—The wood parts are made of selected Birch throughout or plain Oak.

FINISH: All shades of Mahogany and Walnut, also light and dark Oak. Flat or Gloss varnish surface.

Leader Railing



LEADER ADD-A-UNIT RAILING harmonizes with the Leader Partition. The height is 42 inches; the top ledge $\frac{7}{8}$ inch thick; widths from 6 to 12 inches. We supply 6 inch ledges unless otherwise specified. The gates are equipped with double acting hinges and measure 2 feet 6 inches in width. The standard railing units measure from 1 foot 6 inches to 3 feet 6 inches in width in 6 inch multiples.



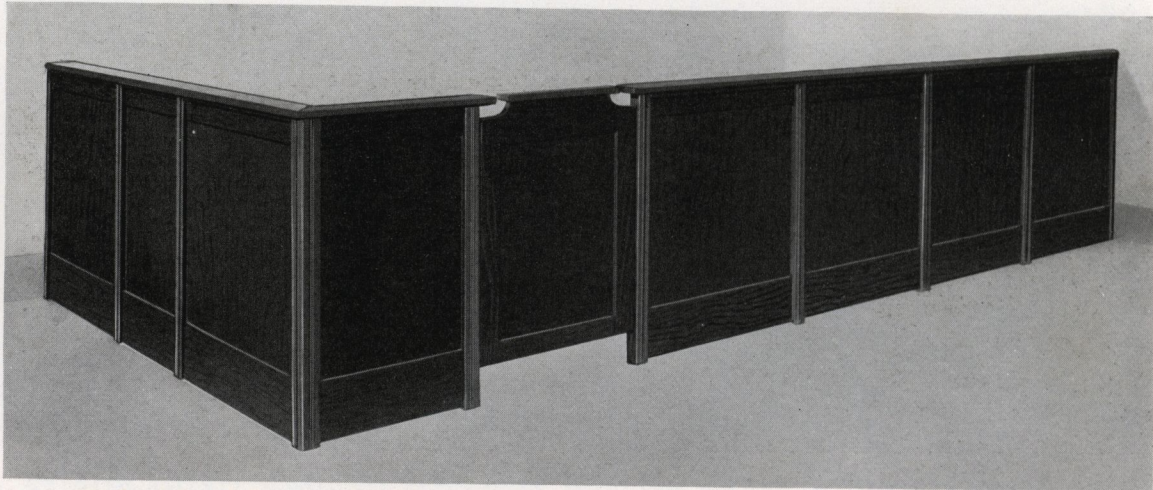
LEADER "S" SANITARY ADD-A-UNIT RAILING is also used with the Leader Partition. The height is 42 inches; the top ledge $\frac{7}{8}$ inch thick; widths from 6 to 12 inches. We supply 6 inch ledges unless otherwise specified. The wood base is eliminated making the Sanitary type. The gates are equipped with double acting hinges and measure 2 feet 6 inches in width. The standard railing units measure from 1 foot 6 inches to 3 feet 6 inches in width in 6 inch multiples.

MATERIALS USED IN CONSTRUCTION OF BOTH DESIGNS—The wood parts are selected Birch throughout, or plain Oak.

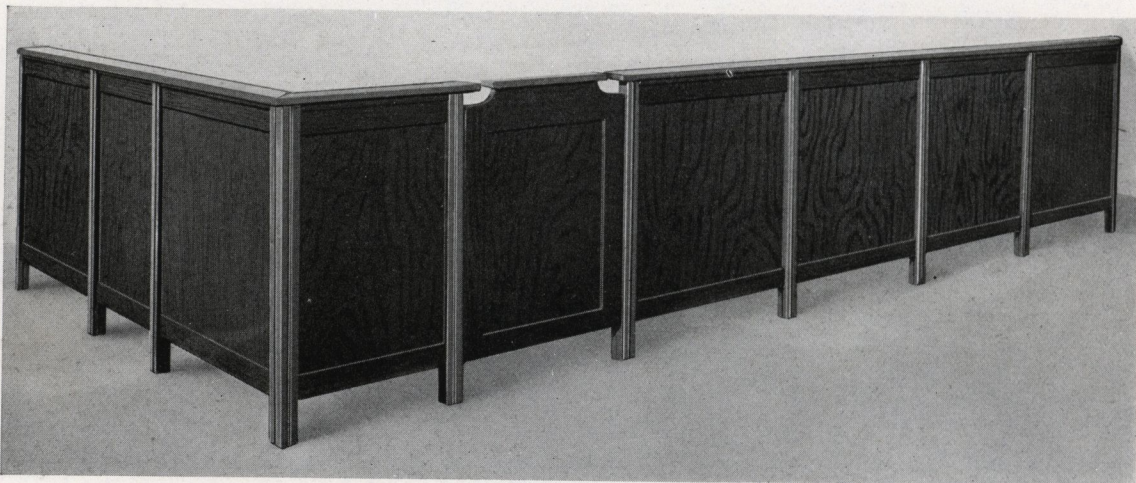
FINISH: All shades of Mahogany and Walnut, also light and dark Oak. Flat or Gloss varnish surface.

ADD-A-UNIT PARTITIONS

No. 80 Railing



No. 80 ADD-A-UNIT RAILING harmonizes with the No. 80 ADD-A-UNIT Partition. The height is 42 inches; the top ledge $\frac{7}{8}$ inch thick; widths from 6 to 12 inches. The wood base is 8 inches high. The gates are equipped with double acting hinges and measure 2 feet 6 inches in width. The standard railing units measure from 1 foot 6 inches to 3 feet 6 inches in width in 6 inch multiples.

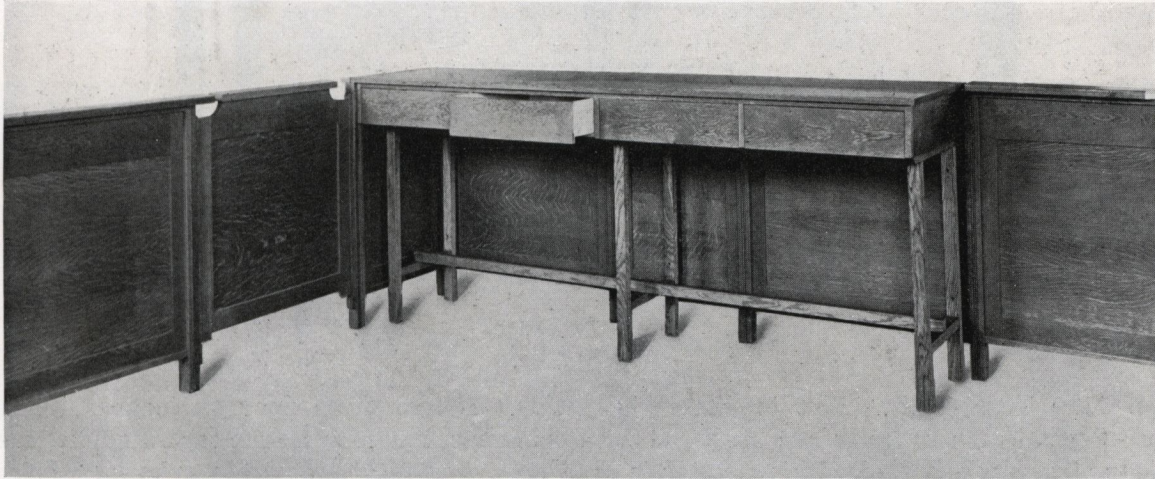


No. 80 "S" SANITARY RAILING is also used with the No. 80 Partition. The height is 42 inches; the top ledge $\frac{7}{8}$ inch thick; widths from 6 to 12 inches. We supply 6 inch ledges unless otherwise specified. The gates are equipped with double acting hinges and measure 2 feet 6 inches in width. The standard railing units measure from 1 foot 6 inches to 3 feet 6 inches in width in 6 inch multiples.

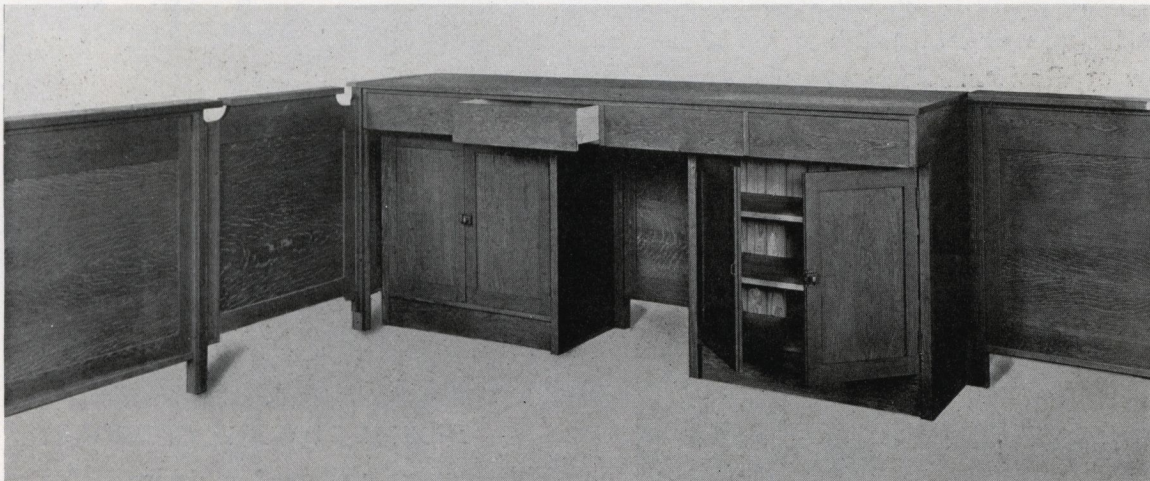
MATERIALS USED IN CONSTRUCTION OF BOTH DESIGNS—Wood parts are made of Poplar except the large panel which is Birch. In Oak all wood parts are plain Oak.

FINISH: All shades of Mahogany and Walnut, also light and dark Oak. Flat or Gloss varnish surface.

Suggestions for Arrangement of Interior Counters
and Storage Cupboards with Railings



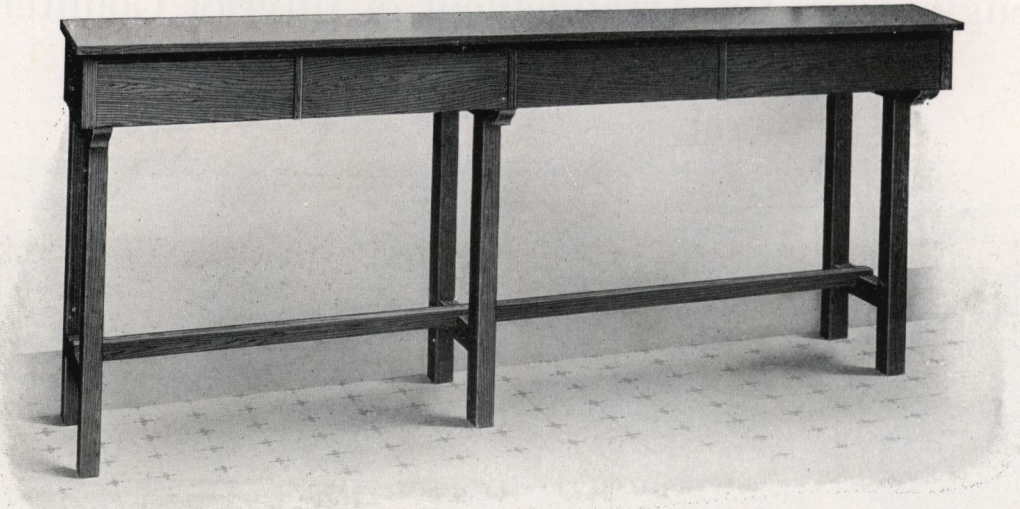
This illustration shows our Ideal "S" Sanitary Railing With No. 1110 counter arranged inside and illustrates the practical use of interior counters in connection with railing 42 inches in height.



This illustration shows the Ideal "S" Sanitary railing arranged with No. 1110 interior counter and storage cupboard underneath. This is a popular and practical arrangement where offices are equipped with low railings requiring the interior counter and cupboards. We can equip any type of railing in this way.

ADD-A-UNIT PARTITIONS

Counters and Storage Cupboard



No. 1110 COUNTER. Flat top 24 inches wide. Height from floor 42 inches. One row of drawers. Special cash drawers are arranged with coin cups, bill compartments and cylinder lock and furnished only when specified. This counter is used as a working counter in banks, and offices. We supply any length desired. We arrange a continuous top which is carefully fitted to the partition before shipment is made.

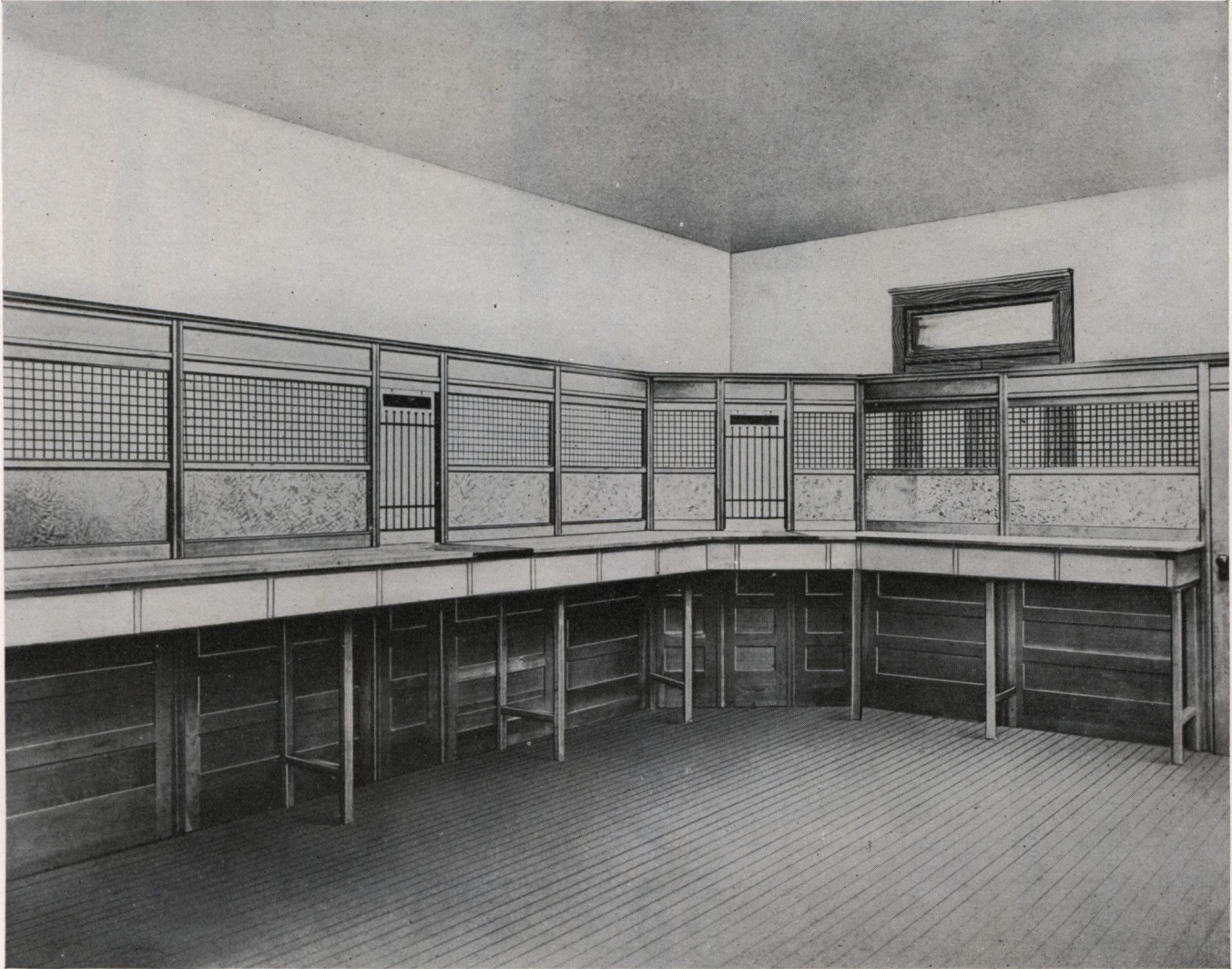
NO. 1109 COUNTER-SLANT TOP. The width of the slanted top is 21 inches; the flat space is 6 inches wide making total width of top 27 inches. One row of drawers. Special cash drawers are arranged when specified. Any length counter can be supplied.



No. 1125 STORAGE CUPBOARD

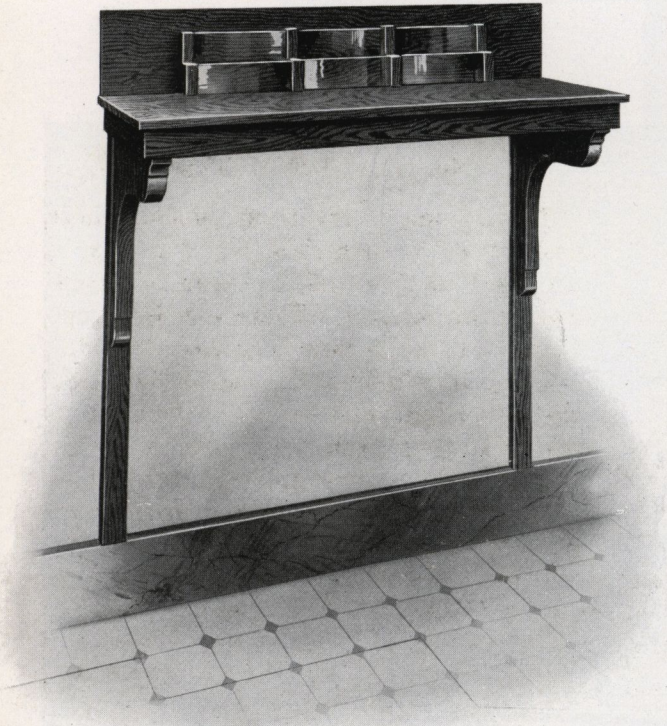
This storage cupboard is designed for use under working counters, No. 1109 and No. 1110. The interior is equipped with two adjustable wood shelves. The top of the cupboard is 18 inches wide. The height 33 inches. Doors arranged to slide on steel track. These are carried in stock in 3 and 4-foot lengths, but special lengths can also be supplied. Wood parts plain Oak or selected Birch.

No. 1110 Counter Inside Partition



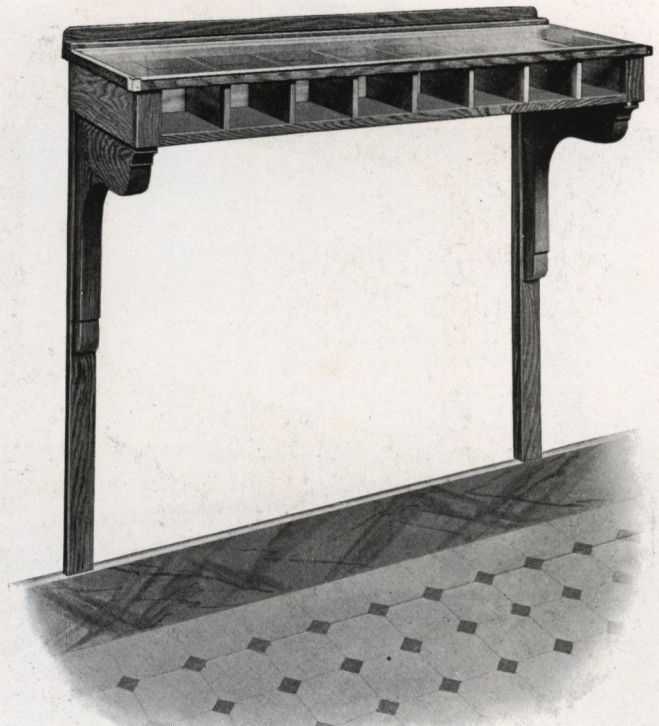
This illustration shows the No. 1110 Counter in use in connection with the No. 69 D ADD-A-UNIT PARTITION. This counter can be arranged inside of the other Partition models that we feature and is for interior working counter for Banking Rooms, Financial Offices, Cashiers' offices, etc. This counter is illustrated on the opposite page where full dimensions are given.

Check Desks



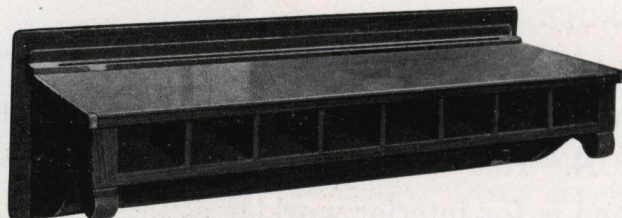
No. 1111 WALL CHECK DESK

This check desk is arranged to rest on brackets having two pilasters. The check rack is made of plate glass strips with wood divisions forming six compartments. The top is wood construction and measures 1 foot 6 inches in width. The total length is 4 feet. Wood parts plain Oak or selected Birch.



No. 1113 WALL CHECK DESK

This desk is fastened to the wall by two pilasters and supported on brackets. There are eight compartments measuring 5 inches in width, 3½ inches in height, 9 inches in depth for checks and deposit tickets. The top is best quality plate glass ¼ inch thick and measures 1 foot 6 inches in width. Total length 4 feet. Wood parts plain Oak or selected Birch.



No. 1114 BRACKET CHECK DESK

This model is designed for fastening to the exterior of the bank screen, or to the wall as preferred. There are eight compartments measuring 5 inches in width, 3½ inches in height, 9 inches in depth for checks and deposit tickets. The top is best quality plate glass ¼ inch thick, and measures 1 foot 6 inches in width. Length 4 feet. Wood parts are plain Oak or selected Birch.

Check Desks

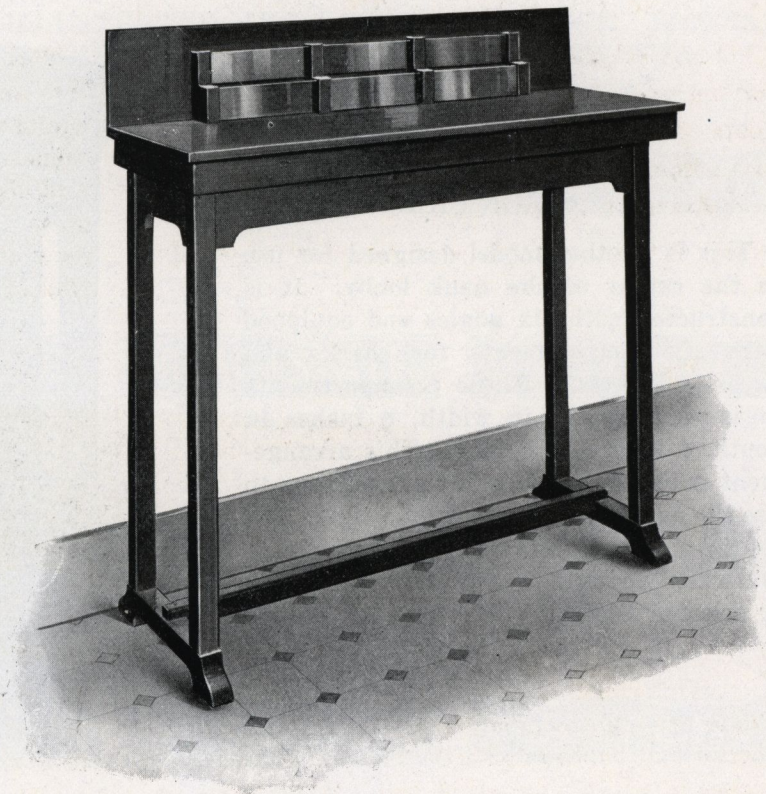


No. 1115 CHECK DESK

This is one of the most popular check desks that we manufacture. The base is arranged so that the desk can be placed away from the wall. There are eight compartments measuring 5 inches in width, $3\frac{1}{2}$ inches in height, 9 inches in depth for checks and deposit tickets. The top is plate glass $\frac{1}{4}$ inch thick and measures 1 foot 6 inches in width. Length 4 feet. Total height 3 feet 6 inches. Wood parts plain Oak or selected Birch.

No. 1116 CHECK DESK

This model is designed with a check rack made of plate glass strips with wood divisions forming six compartments. The top is of wood construction measuring 1 foot 6 inches in width. The length is 4 feet, height 3 feet 6 inches. Wood parts plain Oak or selected Birch.



Check Desks

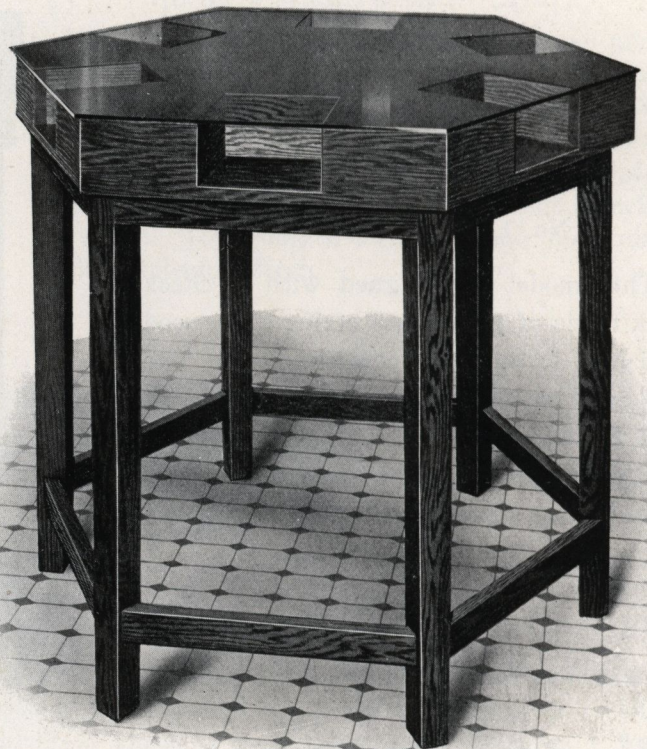


No. 1117 DOUBLE CHECK DESK

This desk is designed for use in the center of the lobby being double construction. The tops are plate glass $\frac{1}{4}$ inch thick with eight compartments on each side. These compartments measure 5 inches in width, $3\frac{1}{2}$ inches in height, 9 inches in depth for checks and deposit tickets. The total length is 4 feet; width 3 feet 4 inches. Pen racks are arranged in the center of the desk. Wood parts plain Oak or selected Birch.

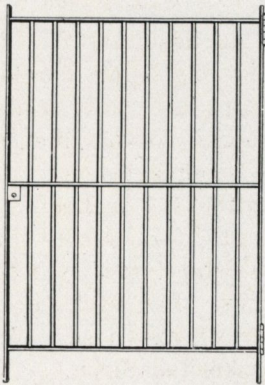
No. 1118 HEXAGON CHECK DESK

This is another model designed for use in the center of the bank lobby. It is constructed with six angles and equipped with six compartments for checks and deposit tickets. These compartments measure 8 inches in width, 8 inches in depth, 4 inches in height. This arrangement makes it possible for six persons to use the desk comfortably at one time. The top is polished plate glass $\frac{1}{4}$ inch thick and rests on felt. Wood parts plain Oak or selected Birch.



Metal Wickets ~ Name Plates

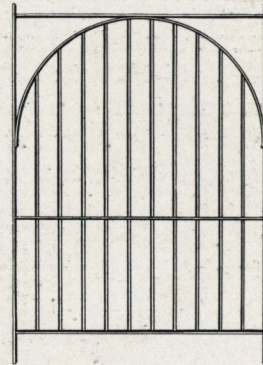
The wickets illustrated are used with our Add-A-Unit Partitions. They are manufactured in our own Metal Department and carried in stock in the standard finish which is Dull Black—all other finishes are special and require extra time. In ordering be careful to specify number, and state whether wicket is to be equipped with hinges and lock, or stationary.



No. 12 WICKET is made of 5/16 inch square bar steel finished dull black. The standard sizes are 1 foot 6 inches and 2 feet in width.



No. 13 WICKET is made of round bar steel finished in dull black. The standard sizes are 1 foot 6 inches and 2 feet in width.



No. 14 WICKET is made of round bar steel finished in dull black. The standard sizes are 1 foot 6 inches and 2 feet in width.

THE NAME PLATES LETTERED AS ILLUSTRATED ARE CARRIED IN STOCK. SPECIAL LETTERING CAN BE SUPPLIED TO MEET INDIVIDUAL REQUIREMENTS. THE RAISED LETTERS ARE FINISHED IN BRONZE WITH DARK BACKGROUND.



12-inch



14 3/8-inch



12 1/2-inch



12 3/4-inch



14 1/2-inch



12-inch



14 1/2-inch



12-inch



12-inch



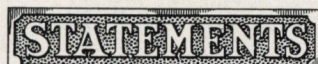
14 1/2-inch



18 1/2-inch



14 1/2-inch



14 1/2-inch

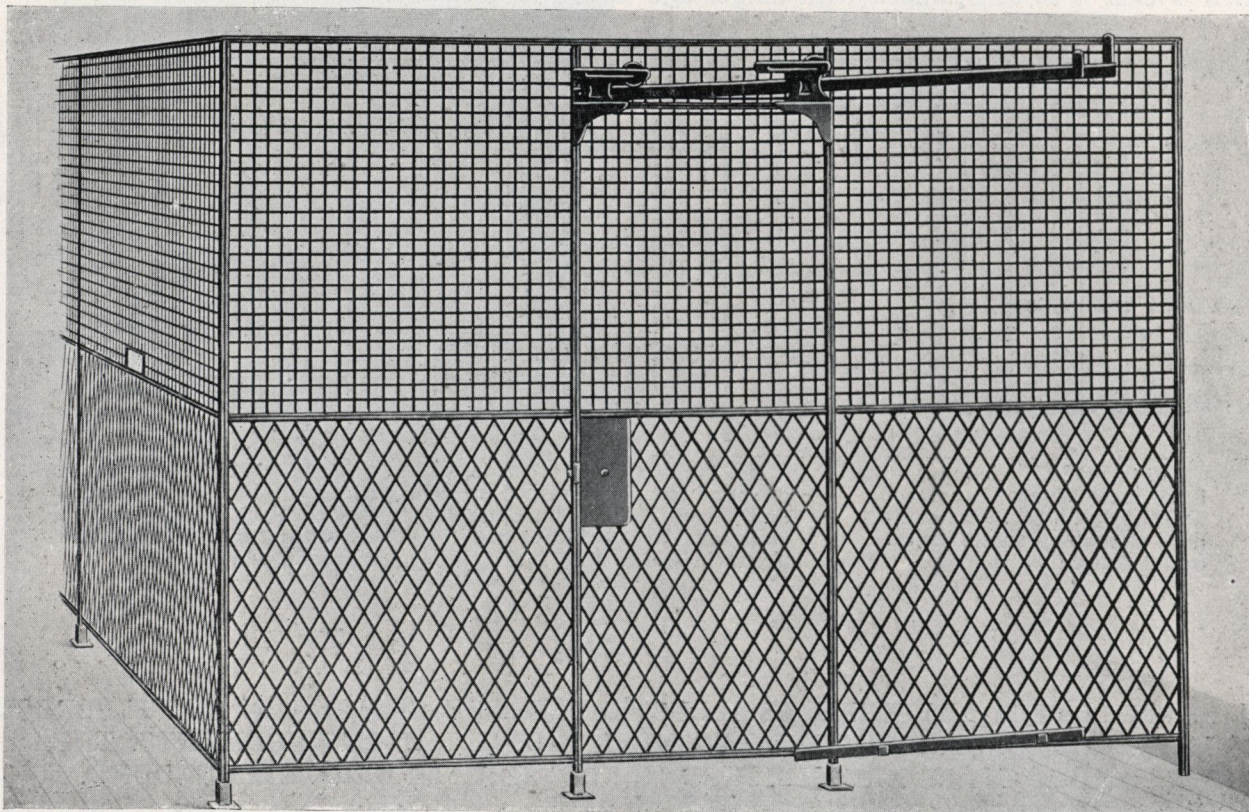


12-inch



8-inch

Tellers and Cashiers Cages—Seven Feet High



No. 1 METAL PARTITION FOR TELLERS AND CASHIERS CAGES.

This metal partition is designed for use in banking rooms where it is necessary to enclose spaces for cashiers, bookkeepers and tellers. It is made to meet the individual requirements of various banking rooms.

The standard height is 7 feet. The framings are constructed of channel iron 1 x $\frac{3}{8}$ inch. The mesh in the upper part is $\frac{1}{4}$ x 1-16 inch flat steel wire, crimped and woven to $1\frac{1}{2}$ inch center. The mesh in the lower part is No. 10 woven in diamond shape with 2-inch center. The posts are equipped with cast iron legs. The doors are gravity sliding on inclined track and fitted with two anti-friction rollers. The lock is cast bronze, extra strong construction, and can be opened from the exterior only. Inside is fitted with knob which is protected by heavy plate, making it impossible to reach the knob from the outside of partition. The hand holes for pass baskets can be placed in any part of the partitions desired.

The standard finish throughout on this metal partition is Dull Black.

PORTABLE ~ SOLID ~ RIGID

No. 1 Metal Partition

FOR ENCLOSING TELLERS AND CASHIERS CAGES
IS ACCLAIMED THE BANKERS FAVORITE CAGING



No. 1 METAL PARTITION is attractively shown in the illustration in use in one of the large banking rooms in Chicago. The illustration shows the lower part of the partition with square mesh instead of diamond mesh. No difference is made in our prices for this arrangement as either will be supplied.

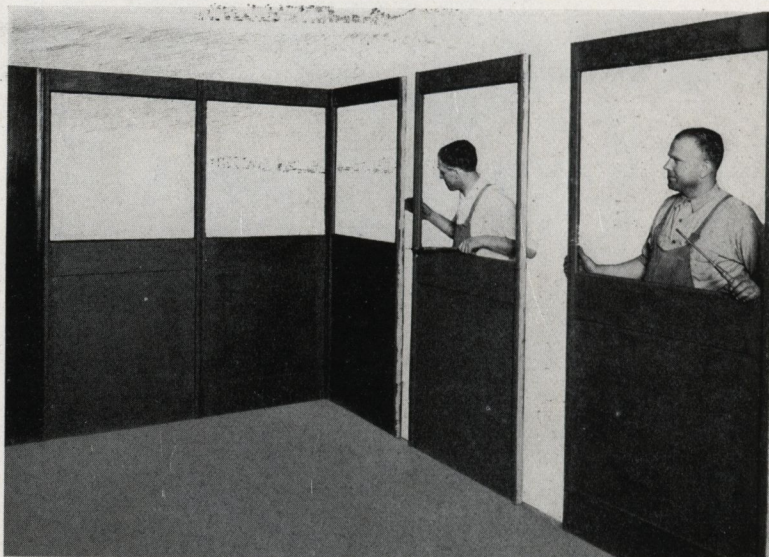
ADD-A-UNIT PARTITIONS

Instructions for Installing Partitions—Seven Feet High

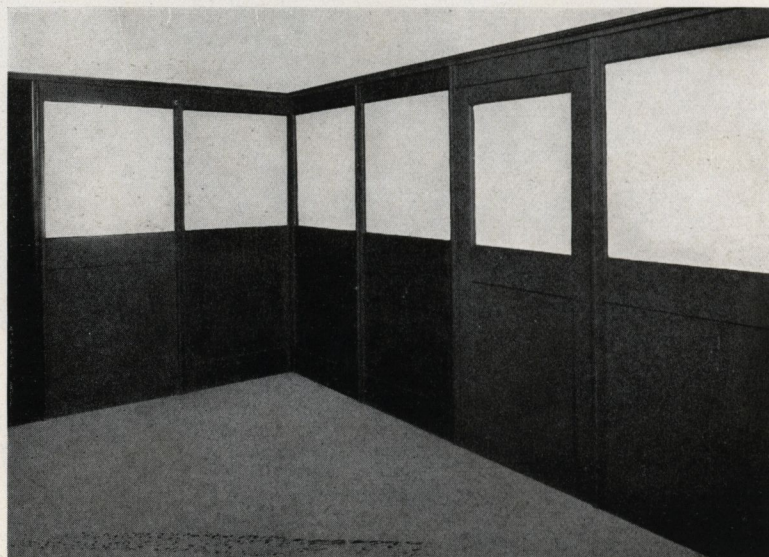
1. The first procedure in installing ADD-A-UNIT Partitions is to mark with chalk on the floor the measurements of the various lengths using the floor plan that is furnished with each installation for guidance. Note in illustration the floor is marked for the partition and the width of each unit is indicated also scribing fillers are indicated showing their exact location.



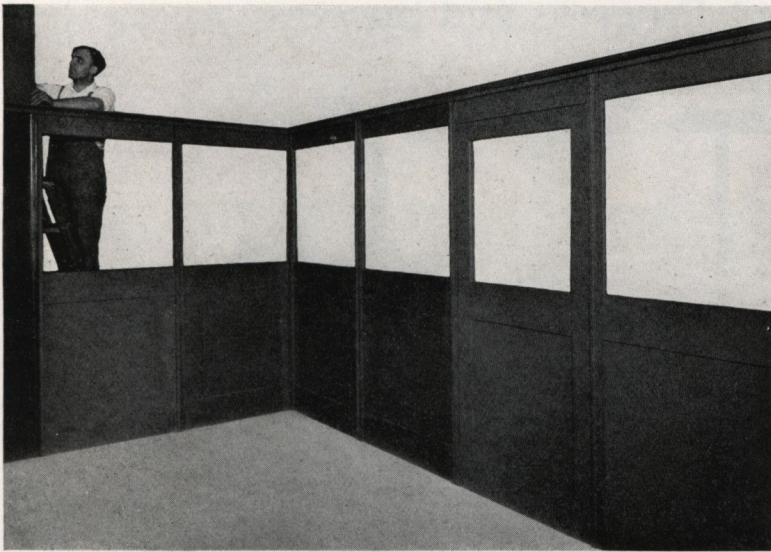
2. The scribing filler which joins at the wall is the first member placed in position. Scribe this filler for unevenness of wall; cut out for wood base, chair rail or any other projections in the building, and then fasten to wall and floor with small angle plates. This filler has a half post attached to it—the first partition unit is joined to this and fastened securely with 4 screws, the holes for which are bored. All units should be joined at least in groups of two before fastening to the floor. By doing this it can readily be seen if it is necessary to cut the scribing filler down, as all fitting should be done with the fillers—not the standard units. Then slide the units into position attaching them with screws and fastening permanently to the floor with floor plates which are placed at the posts.



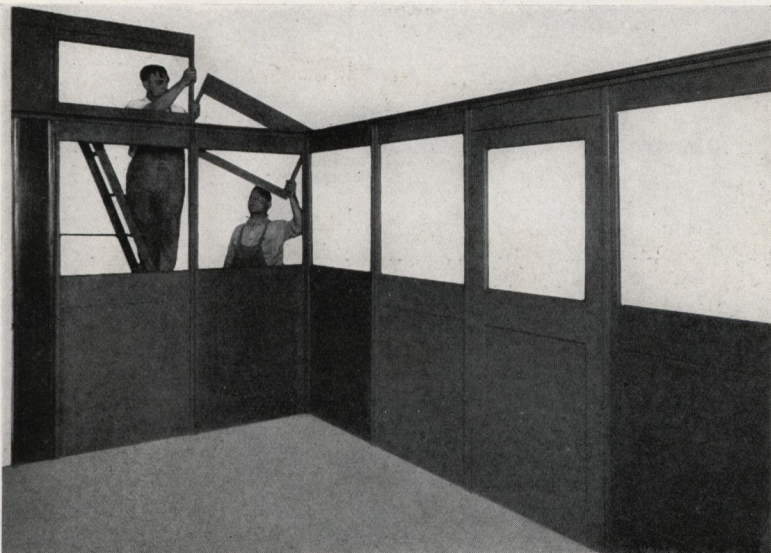
3. The last member placed in position is the capping which is furnished in long lengths and cut to required size during installation. This capping is held in place with screws, the holes for which are bored. This makes the partition rigid. The doors are then hung, the hardware put on and the glass set—the stops for the glass are fitted in the frames and are removed for insertion of glass. This completes the installation of the seven foot Partition.



Instructions for Installing Ceiling Height Partitions



4. The first procedure with upper structure is to attach the scribing filler to the wall, carefully fitting the same as in the lower partition. This scribing filler also has a half post attached to it so that the first upper structure unit can be joined.



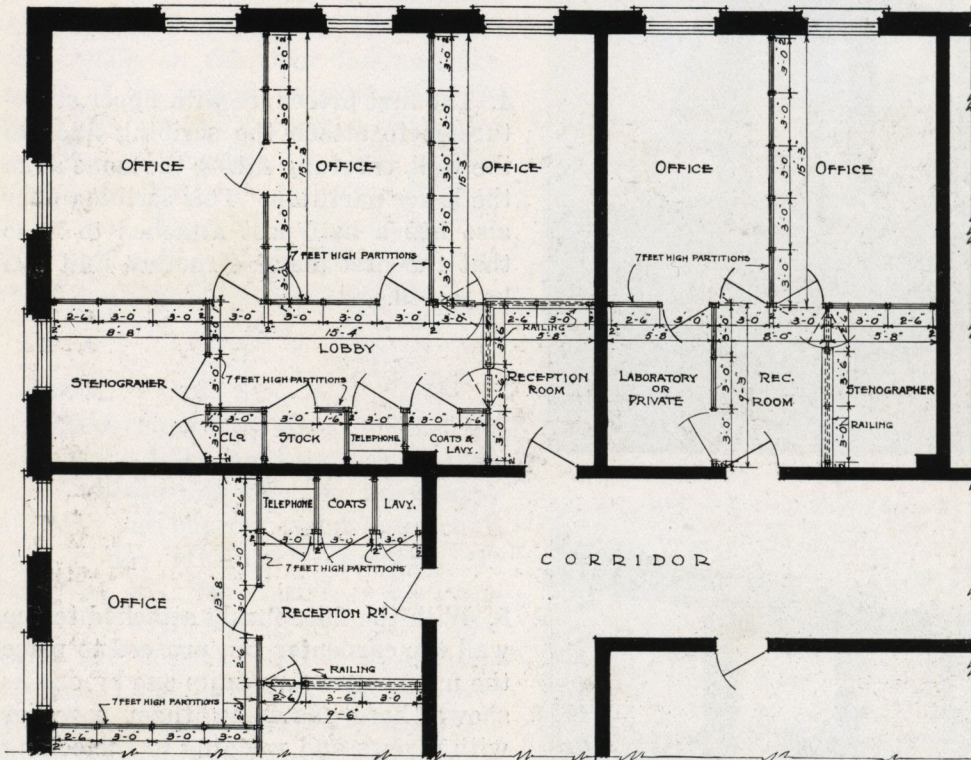
5. With the filler firmly attached to the wall the carpenter can proceed to place the upper structure units one by one as shown here fastening them together with screws and wedging to the ceiling until the entire length is enclosed. The upper structure units are shipped ready to place in position.



6. After all upper structure units are set in place the crown moulding which is attached to the partition at the ceiling should be placed as shown. This fits snugly against each side of the upper structure holding it firmly in position. The transoms are placed above the doors and equipped with transom hardware. The glass is fitted in the frame—the stops for holding the glass in position are to be removed from the frames first. The installation of ADD-A-UNIT Partition is so simple that any carpenter can do the work. The cost is nominal as all parts are shipped complete ready for installation.

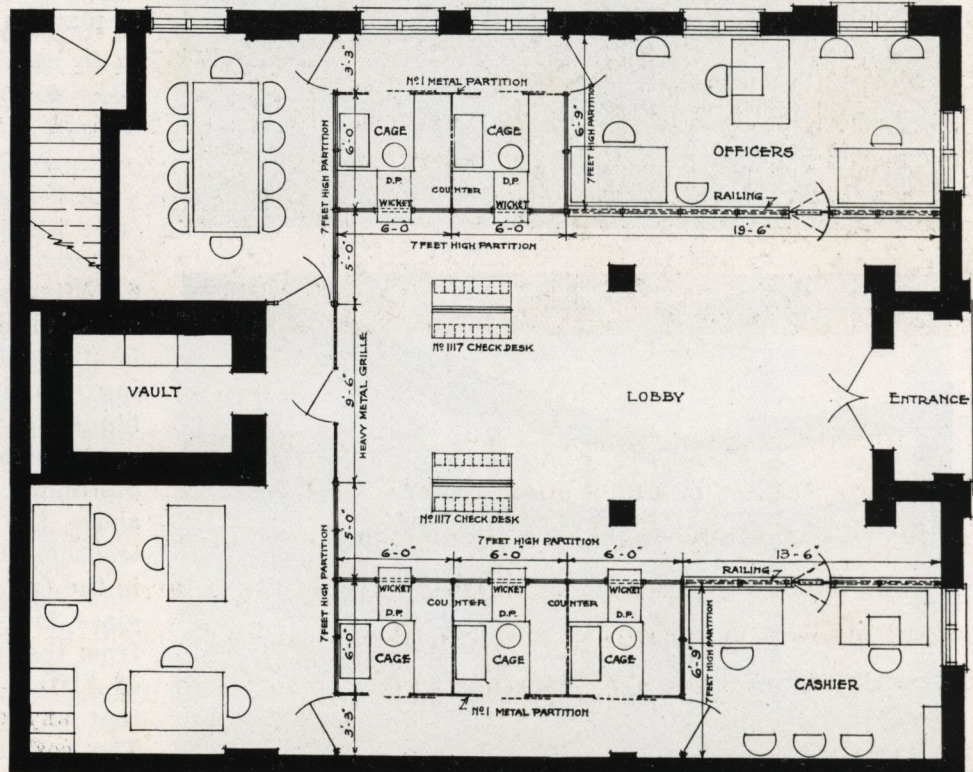
ADD-A-UNIT PARTITIONS

Correct Office and Banking Arrangement Creates an Atmosphere of Progress and Success



The illustration shows a typical floor plan for an office layout. All spaces as indicated can be supplied with ADD-A-UNIT Partitions, Railings and Upper Structure to ceiling where necessary.

The illustration shows a typical Banking Room with spaces indicated for the various offices. All equipment shown on this plan can be furnished from the ADD-A-UNIT lines.



PORTABLE ~ SOLID ~ RIGID

SPEED IS THE CRY OF MODERN BUSINESS. IT IS THE URGE
OF EVERY ORDER. THOUSANDS OF FEET OF ADD-A-UNIT
PARTITIONS OF ALL DESIGNS IN STOCK



This view is taken from a section of one of our numerous factory floors and enables you to visualize the tremendous stock of ADD-A-UNIT partitions we carry. This makes it possible to absolutely guarantee prompt shipment of all orders. Our stock is carried in the white, sanded and ready for finishing. We have a large finishing department equipped with all modern apparatus so that partitions can be finished just as they are specified. We require only time necessary for the finishing process in which to fill orders.

Specifications for Add-A-Unit Partitions

CONSTRUCTION FEATURES

The individual units measure 1 foot 6 inches, 2 feet, 2 feet 6 inches, 3 feet and 3 feet 6 inches in width. The doors measure 2 feet 10 inches; including the frames, 3 feet.

The standard units of the partitions 7 feet high are made with rails and stiles cut from solid stock. The rails are coped, tenoned and glued securely to the stiles. The panels are veneered.

The units for the upper structure are of similar construction, the rails coped and glued to the stiles.

The door rails are deeply coped, tenoned and secured to stiles with glue and dowels. Rails and stiles made with built up cores. The panels veneered cross banded. The thickness is 1 $\frac{1}{4}$ inches.

Scribing fillers to be used at the walls to allow for unevenness and for fitting over projections. These fillers are furnished in widths from 2 to 12 inches.

The posts for the partition and upper structure are of solid stock and are made with tongue and groove which insures perfect fitting of partitions when installed.

The partitions are fastened to the floor with iron floor plates. These are placed at each post and generally set on the side of the partition that does not face the lobby.

The standard partition is equipped with a heavy glued up cornice member which is securely fastened to the partition. This cornice is supplied in designs to harmonize with the various models.

The upper structure is finished at the ceiling with decorative crown moulding 3 $\frac{1}{2}$ inches wide.

Transoms in upper structure are equipped with regulation hardware and placed above each door for ventilation.

The low railings harmonize in design with each partition model, and are of the same construction as the partitions. The units are furnished in the same sizes.

MATERIALS USED IN CONSTRUCTION

ADD-A-UNIT Partitions are carried in stock in the following wood:

BIRCH—All wood parts are made of selected Birch, all panels veneered.

OAK—All wood parts are plain white Oak, all panels veneered.

WALNUT or solid **MAHOGANY** construction throughout supplied on special order only.

All lumber is selected, thoroughly seasoned and kiln-dried.

Workmanship is of cabinet construction and is not to be compared with mill construction.

FINISH—All surfaces are hand scraped and sanded ready for the finishing process which consists of:

One coat of stain or filler, two coats of shellac, two coats of varnish thoroughly sanded between each coat, surface Flat or Gloss.

All partitions are shipped completely finished in the standard shades of light and dark Mahogany, light and dark Oak and all shades of Walnut. Special colors can be supplied. We also ship the partitions in the white unfinished.

HARDWARE—All hardware including knobs, grille, mesh, etc., is furnished in the standard dull black finish.

GLASS—The standard glass furnished with partitions is Opaque in Florentine, Maze or Aurora patterns. Clear double strength glass to order.

MARBLE—We can arrange for marble base on any of our standard partitions or railings when specified.

SHIPPING—All partitions are crated knocked down.

