

SNEAD
DYNAMIC
WALLS

MOVABLE PARTITIONS

IN METAL & GLASS

SOUNDPROOF AND
SOUND ABSORBING

Snead Dynamic Walls

Sound insulated and sound proofed.
New, modern architectural lines.
Easy to erect, alter, move.
Adaptable to any space.
Decrease maintenance.
& repay owners
Continually
On cost.

PLANNING SERVICE

Without obligation, Snead & Company's engineers, trained in office layout and arrangement, will co-operate in solving your problems and assist you with considerable saving of time to you.

The most practical office layout will be submitted for your approval, illustrating the best arrangement of partitions, railings, closets, radiator covers, etc.

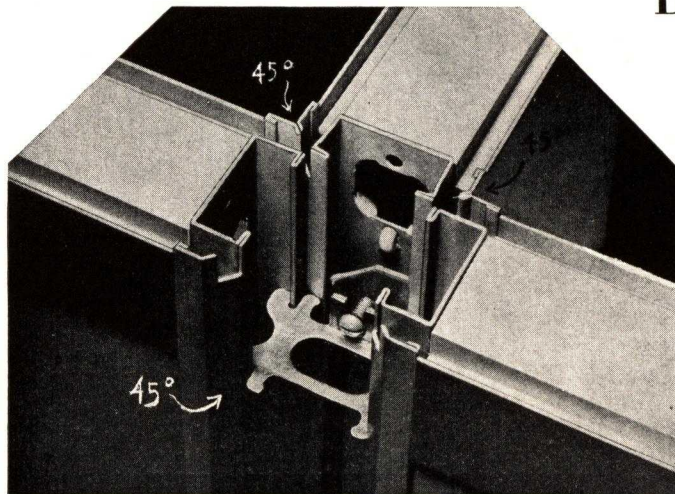


Fig. 1. Three-Way Intersection, Type "SF" and "RF". Note 45° angle of posts and single link plate connection

FOUNDED
1849

SNEAD DYNAMIC WALLS CLASSIFICATION

All are unit built, flexible, 100% reusable and wireable

1. TYPE "MF" Page 12	Single steel panel. Hollow metal, universal and integral post and rail construction. For industrial offices, warehouses, etc.
2. TYPE "M" Pages 12, 13	½ in. thick. DOUBLE insulated, universal and integral post and rail construction. For general use.
3. TYPE "SF" Pages 4, 5, 6, 7	3 in. thick. Two insulated panels separated by dead air space. Semi-flush with ¼-in. post projection. Full moulded glass panel. Removable panels for double glazing. Universal and integral post. Wire way base. For use in general offices, corridors and wainscoting.
4. TYPE "SFS" Pages 4, 5, 6, 7	3 in. thick. Same as "SF" but with sound proof panel, rail post, door, top filler and periphery. For use in executive offices, corridors, schools, hospitals, and to replace masonry walls.
5. TYPE "RF" Page 8	3 in. thick. Two insulated panels. Flush surface. For use in executive offices, corridors, wainscoting, etc.
6. TYPE "RFS" Page 8	3 in. thick. Same as "RF" but with sound proof treatment as in "SFS". For general replacement of masonry walls, for use in finest executive offices, and general application described above for Type "SFS".
7. TYPE "FF" Page 6	3 in. thick solid insulated and sound proofed flush wall. For general use in replacing interior masonry walls.
8. BANK SCREENS RAILS Page 9	For all types of semi-private, low enclosures.
9. ACCES- SORIES Page 14	Special accessory items, hardware, wickets, counters, closets, etc.
10. HOLLOW METAL WORK Page 15	Doors and bucks for masonry walls. For hospitals, schools, apartments, etc.
11. SPECIAL PARTITIONS	Snead engineers are available for the solution of any special problem.

MAIN OFFICE AND FACTORY

JERSEY CITY, N. J.—Telephone, Delaware 3-3500
NEW YORK—205 East 42nd Street, Murray Hill 4-0986-7-8
BOSTON—234 Clarendon Street, Commonwealth 4736

FOREIGN OFFICES

BERLIN, GERMANY—Bibliostahl, Wolf Netter & Jacobi Werke
LONDON, E.C. 2—Snead Library System, Luxfer Ltd., 16 Hill St.
PARIS, FRANCE—Snead Library System Societe Anonyme des
Forges de Strasbourg, 160 Rue Montmarte
SARONNO, ITALY—Parma, Antonia & Figli
TORONTO, CANADA—Snead Iron Works Ltd.

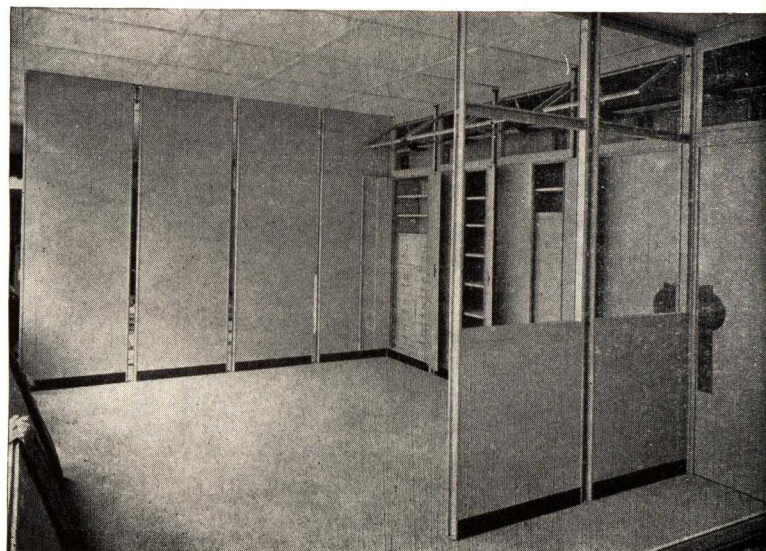


Fig. 2. Unit panels in course of erection, all steel type and steel and glass type, with pilasters not yet in place. Note no muss, no rubbish

For 89 years

BUILT INTO Snead Dynamic Walls is the accumulated experience of 89 years of specializing in architectural metal products.

The finished product asks no odds of fine cabinet work either as to design or execution. In architectural appearance Snead walls, bank screens and railings are of outstanding merit.

Snead designers have set a new mark in structural ingenuity with many important patented features. These inventions have increased rigidity, made wiring changes easy, achieved greater simplicity in construction and reduced the number of loose parts for field handling. Only by seeing the ease and speed of erecting and taking down a wall can these be appreciated.

No finer movable wall, either in construction or appearance, can be obtained.

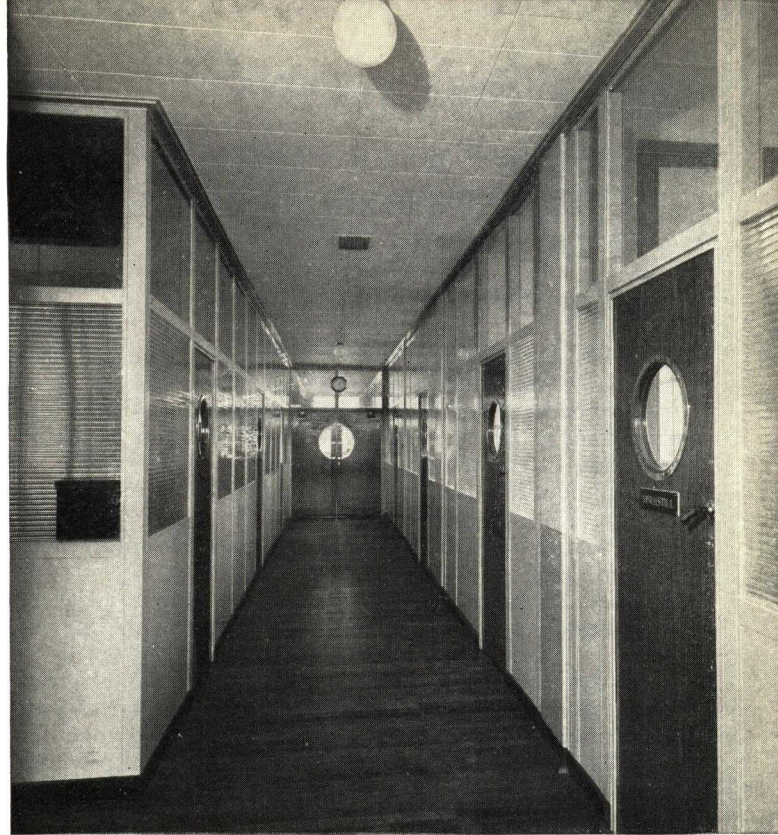


Fig. 3. Soundproof "SFS" corridor. Unusually distinctive and modern in door design and use of glass

6 NEW IDEAS

In Architectural Design—Snead movable walls are designed on straight, simple lines. They are modern, with every part functional. The absence of paneling, moulding, etc., allows this partition to harmonize in appearance with any type of equipment. Where an office has a plaster wall on one or more sides there is no noticeable architectural conflict with this type of paneled wall on the other sides.

In Sound Proofing—Snead made possible for the first time the use of demountable walls that meet exacting requirements. Types S.F. and R.F. are double wall partitions 3 in. thick, doubly insulated with cemented-on linings of sound absorbing fiber board. To attain absolute quiet and privacy these walls may be packed solidly with mineral wool as in Types S.F.S. and R.F.S. These walls, acoustical laboratory measurements show, are more sound deadening and sound absorbing than an ordinary masonry wall. Lawyers, doctors, and others demanding the soundproofness of masonry are now using these Snead Dynamic Walls.

In Finishes—The former use of masonry walls with abutting movable partitions invariably produced an office in two colors. Snead partitions are available in various light pastel tones of buff, antique ivory, tan, green and gray, which will match the standard finishes on plastered wall surfaces. These lighter and scientifically matched finishes make a more cheerful office, and add greatly to the lighting of the space by reason

of their greater light reflection. They may also be obtained in natural wood grain, covered with fabrics or wood veneer of various kinds. Any decorative finish is now available.

Over Night Alterations—Owing to their ingenious, demountable units, it is easy to adapt, alter and rearrange these walls, whether they are all steel or steel and glass. Changes can be made over night without slowing up or interfering with the operation of your office. The dust, mess, rubbish and uproar of tearing out plaster block walls, and building new ones, will never again worry you when you want to change the arrangement of your space. With Snead Dynamic Walls there is no loss in your investment.

Self-Seating 45 Degree Angle—The simplicity of the Snead assembly is due to the vertical edges of the panels and pilaster covers being beveled on a 45 degree angle. Pilaster covers, both flush and semi-flush, fit snugly into the 45 degree angles of the posts. Two, three and four-way connections and outside corners are made without the use of adapters or other mouldings because of this self-seating feature.

Concealed Wiring—All wires, high and low tension, are carried in concealed vertical and horizontal raceways. Switches and receptacles may be set flush with the partition wherever desired. Fish type wire base or lay-in wireway, optional.

Snead Dynamic

SOUND PROOF SOUND ABSORBING WALLS SEMI-FLUSH

Type "SF"—Sound Absorbing

SEMI-FLUSH design with $\frac{1}{8}$ in. projection at posts only. 3 in. thick double insulated walls.

All members of best furniture grade steel, roller die processed, giving uniformity, sharp definition of arises, and snug fit cabinet work appearance.

Full moulded glass panels. Maximum fire-resisting quality.

All wiring concealed in vertical and horizontal members. Lay-in wire way base.

Panels interchangeable without disturbing adjacent units or top filler. All connections made with interior clips.

Tie-rod assembly for easy cut-down. No welds, rivets or screws in assembly. Minimum of small parts, with posts integral with panel. Panels are locked together and aligned by a patented one-piece internal clip which also locks on both pilaster covers, and furnishes the connection for three and four-way extensions. *No other movable wall has this feature.* 100% salvagable and reusable.

This is the standard type of office partition, affording all the soundproofness and privacy normally necessary for comfort and production efficiency.

Type "SFS"—Maximum Sound Proof

(See also pages 6 and 7)

Exactly similar in design to Type "SF," but having the interior of the panel, post, rail and top filler solidly packed with mineral wool, and the periphery sealed with non-hardening mastic.

Single or double-glazed panels. When double-glazing is desired, the panels are removable for ease in cleaning. Different thicknesses of glass prevent tuned frequencies.

With either the all-steel or the double-glazed "SFS" Dynamic Wall, accounting, stenographic, business machine or other noisy rooms are completely isolated. Type "SFS" Dynamic Walls are more sound proof than a five inch thick masonry wall.

OF SPECIAL INTEREST TO EVERY ARCHITECT, BUILDING OPERATOR AND OWNER

(See table on opposite page)

The cost of altering your offices, showrooms and corridors is a matter of prime importance to you. Snead Dynamic Movable Walls have many refinements of construction to save you money. With the tie-rod assembly, panels can easily be cut down in width in the field. Snead panels may be taken apart, cut down, reassembled and reglazed in less than an hour, with no danger of marring the finish, as *all connections are made by means of interior fastenings.*

The Snead Dynamic wall is the only partition with a single internal clip designed to assure positive locking and alignment of panels, and snug fit of both pilasters. Snead construction permits the easy removal of panels without disturbing adjacent units or top filler.

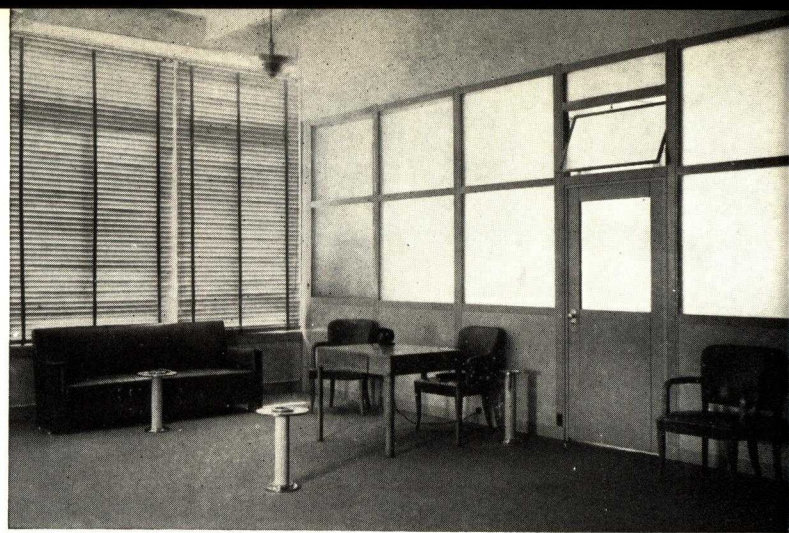


Fig. 4. Here Type "SFS" double-glazed separates reception room from general office space. Note harmony of appearance with other equipment

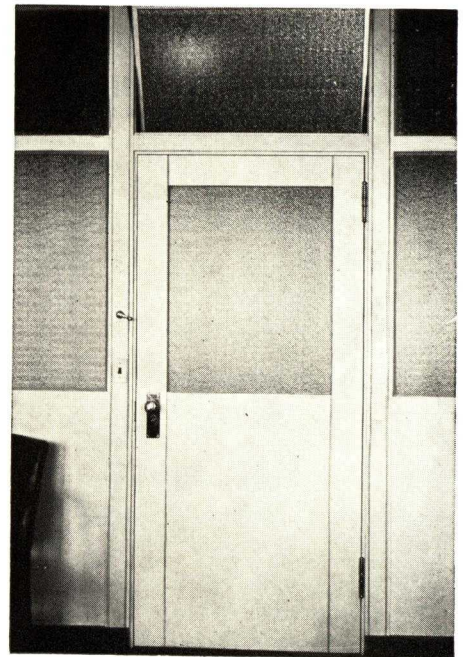


Fig. 5. Simple straight lines in panels and doors harmonize with any interior architectural treatment. Note transom, with concealed operator and switch on door post. Type "SF"

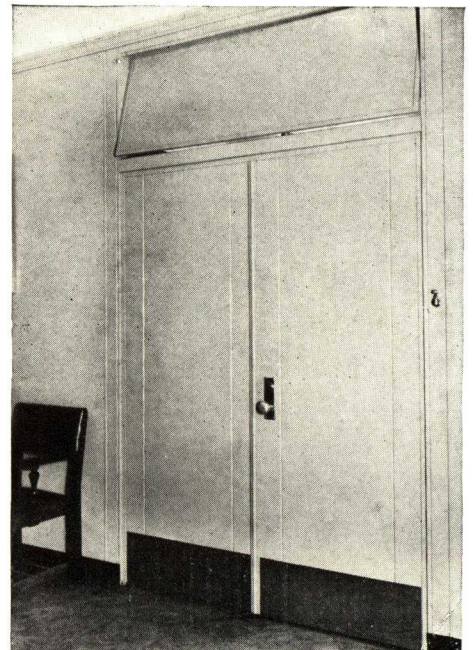
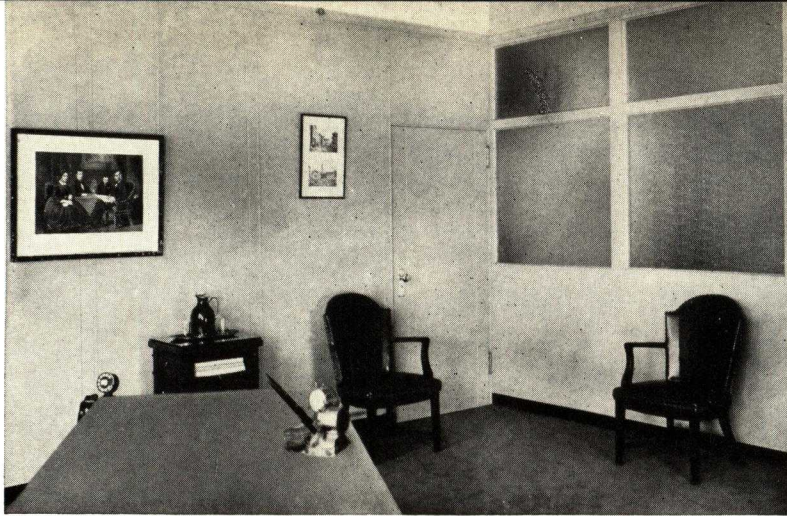


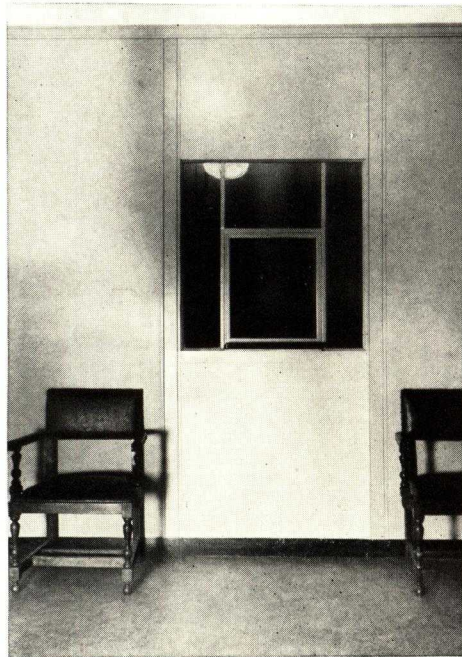
Fig. 6. Double doors, single swing, one active and one inactive (with head and foot bolts), are inconspicuous in "SF" design

Snead Dynamic

OF SPECIAL INTEREST INVESTMENT VALUE AND SAVINGS

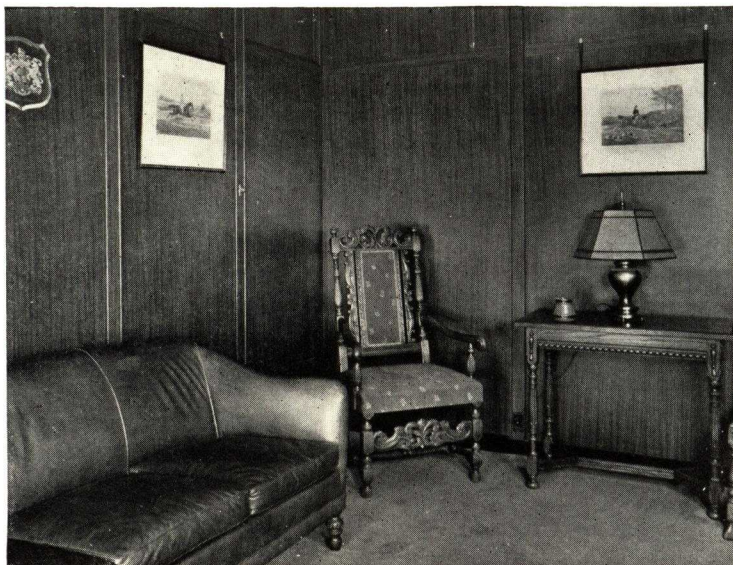


Above: Fig. 7. Attractive in its light warm gray finish, this executive office, with corridor wall of obscure glass and dividing wall of Type "SFS", gives the utmost in privacy



Left: Fig. 8. Simplicity of detail is predominant in this reception room in reception window. Type "SFS"

Below: Fig. 9. Finished in beautifully grained walnut, this reception room of Type "SFS" unit wall is more sound proof than a masonry wall



Simplicity of construction—eliminating the multitude of small parts—is another factor for saving. Many loose parts not only increase erection costs but lead to inevitable losses. Snead has eliminated the old style inside corner moulds by means of the 45 degree angle design of the integral panel posts, assuring perfect fit and cabinet-work appearance. Cleaning costs are cut to a minimum as there are no dust-catching projections or ledges.

Snead Partitions are modern, but not modernistic. They are designed and built on simple, straight functional lines, to harmonize with masonry walls. They will not be out-moded in a few years, having been designed for permanence—a true investment value.

Snead Dynamic Walls cost less in the end. Where masonry walls are torn down and rebuilt the cost is far greater than the money actually spent for labor and material. The cost includes: (1) the loss of the square foot space while the alteration is in progress; (2) the loss resulting from the disturbance to your employees; (3) the cleaning expense and the wear on your typewriters and other costly business machines caused by the dust and dirt, and (4) that other unknown cost—the loss occasioned by not making the changes when they were first known to be necessary because of the general upsetting condition and muss attending the altering of space sub-divided by plaster walls.

Compare with this the removal and altering of Snead Dynamic Walls. In a few hours, over night if necessary, Snead Walls are erected or altered to suit the then present needs of your business. And because of this ease in altering, you will not temporize when you know you must change your layout to meet your requirements of economy and speed in business.

There are no maintenance costs with Snead Dynamic Walls. The durable finishes in baked on enamels, are practically indestructible. This finish is not marred in alterations. No parts are injured in alterations.

COSTS

SNEAD DYNAMIC WALLS vs. MASONRY

The following is based on typical installations with a door, transom, glass, and hardware.

	MASONRY WALL	SNEAD "SFS" WALL
When you install a partition you pay...	201.00	310.00
To take down the wall it costs you....	29.00	11.00
To re-erect the wall in a new location the new material, labor and finish costs you.....	125.00	38.00
After this first change you have invested in walls.....	355.00	359.00
Allowing, after this first change, for the value of usable material remaining, your cost has been.....	279.00	59.00
The salvage value at this point is therefore	76.00	300.00

How many times will you change your office arrangement? Snead Dynamic Walls pay for themselves after the first alteration, and still retain their original investment value.

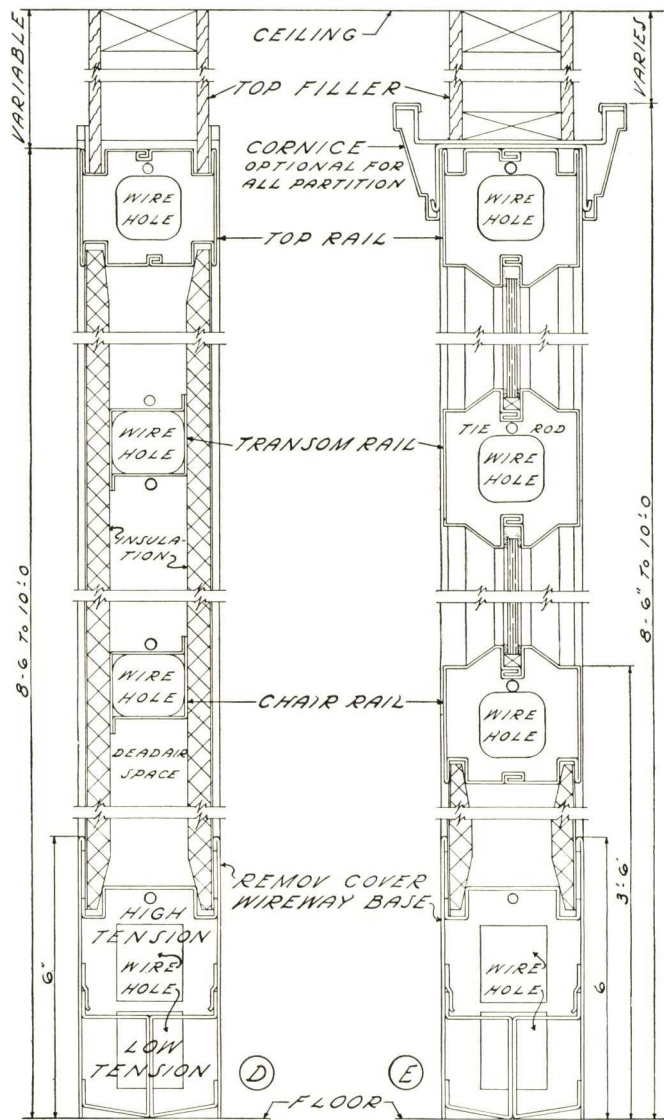
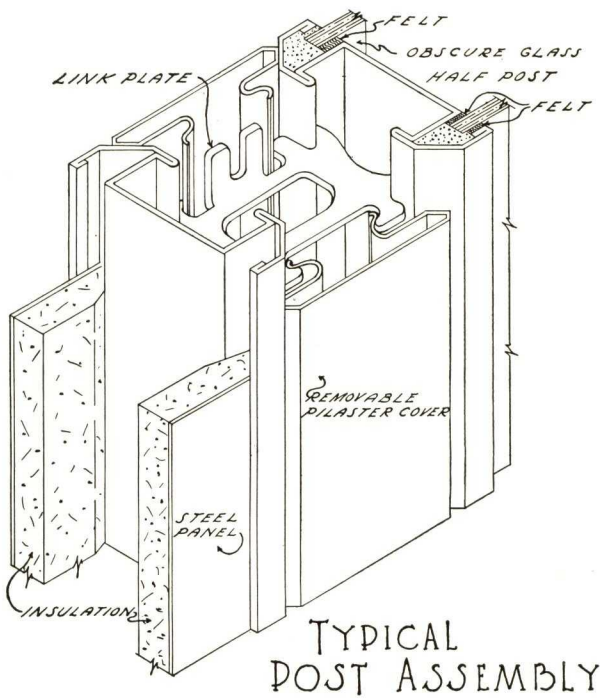
SNEAD MOVABLE WALLS ARE SOUND AND HEAT INSULATED

Snead Dynamic

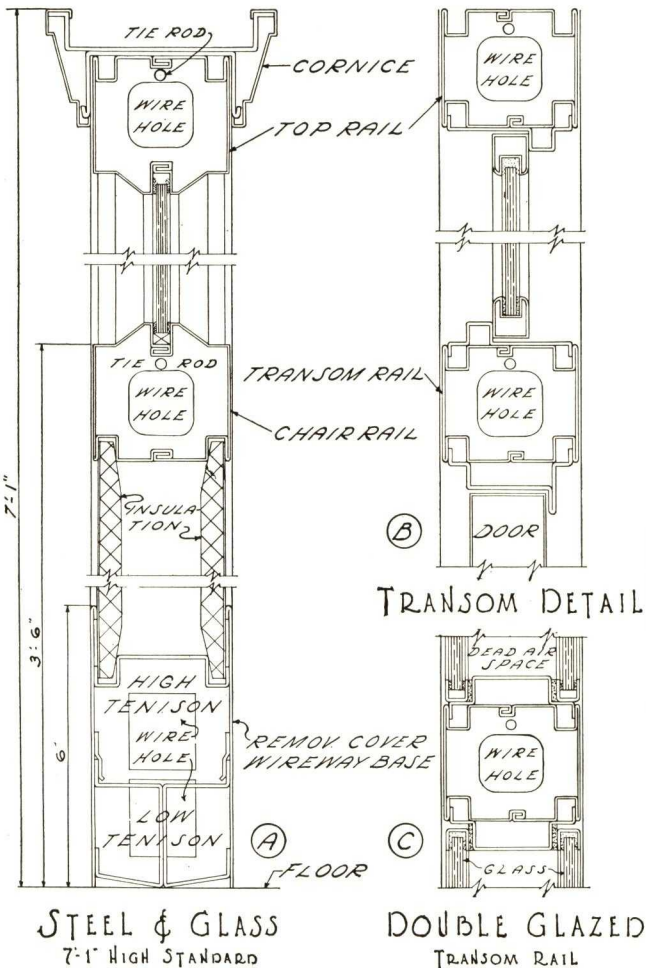
TYPE "SF" SOUND ABSORBING

TYPE "SFS" SOUND PROOFED

(Similar in construction to "SF" but solidly packed with mineral wool)

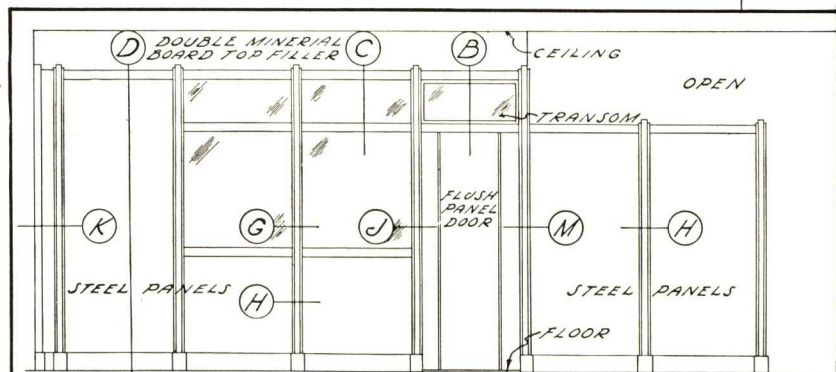


ALL STEEL **STEEL & GLASS**
8'-6" TO 10'-0" HIGH - MINERAL BOARD TOP FILLER TO CEILING



STEEL & GLASS
7'-1" HIGH STANDARD

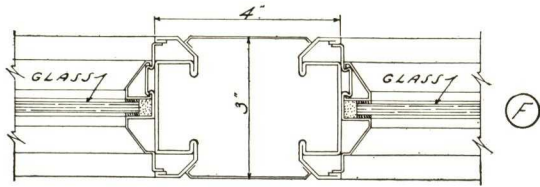
DOUBLE GLAZED
TRANSOM RAIL



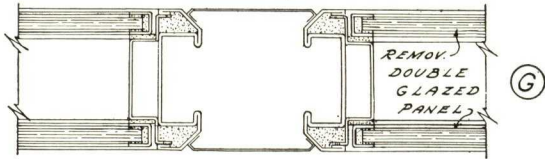
TYPICAL ELEVATION
PANEL SIZES 1'-6" TO 5'-0" IN 6" MULTIPLES

**TYPE "SF" SOUND ABSORBING
TYPE "SFS" SOUND PROOFED**

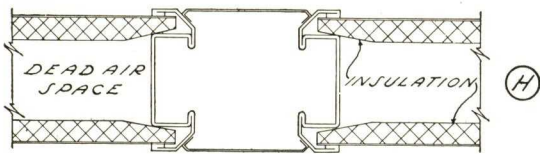
(Similar in construction to "SF" but
solidly packed with mineral wool)



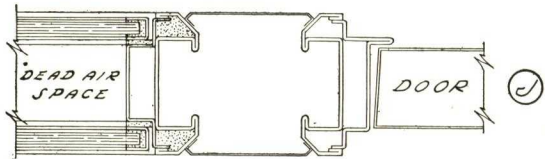
SINGLE GLAZED



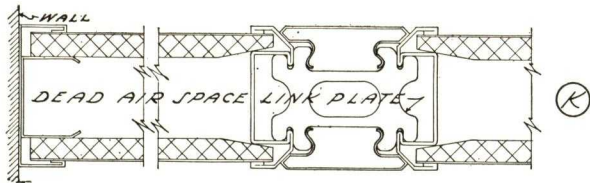
DOUBLE GLAZED



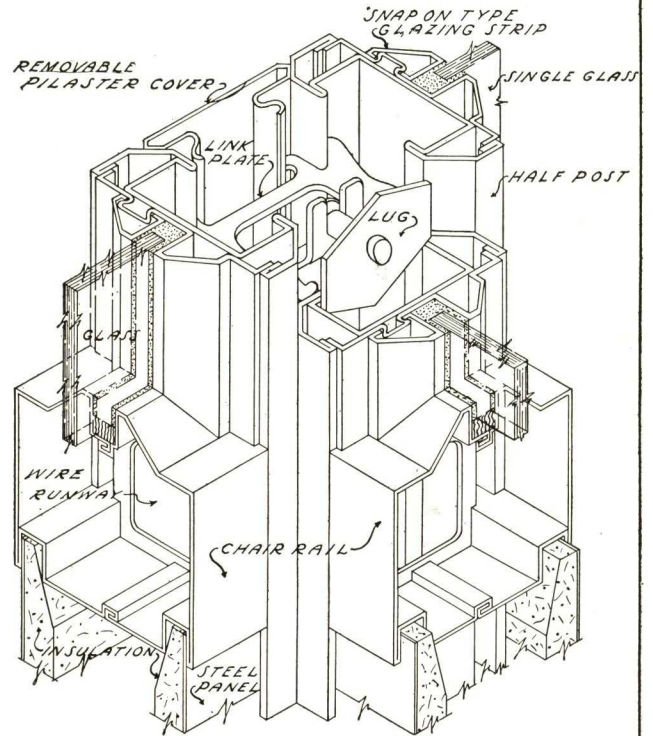
ALL STEEL



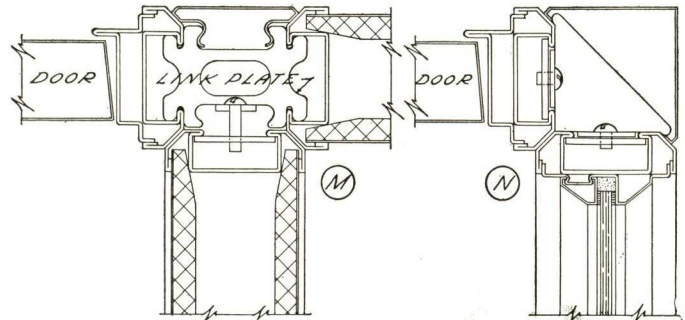
DOOR JAMB



END FILLER & POST

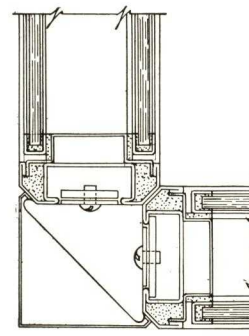


TYPICAL POST ASSEMBLY

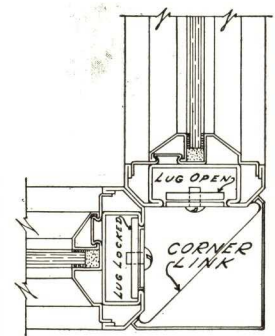


THREE WAY POST
WITH DOOR JAMB

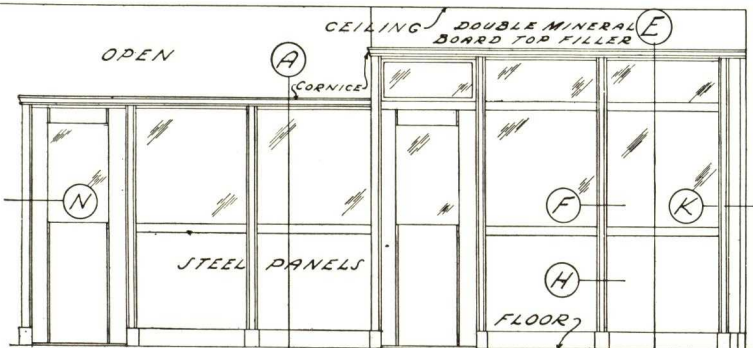
CORNER POST
WITH DOOR JAMB



CORNER POST
DOUBLE GLAZED



CORNER POST
SINGLE GLAZED



TYPICAL ELEVATION
PANEL SIZES 1'-6" TO 5'-0" IN 6" MULTIPLES

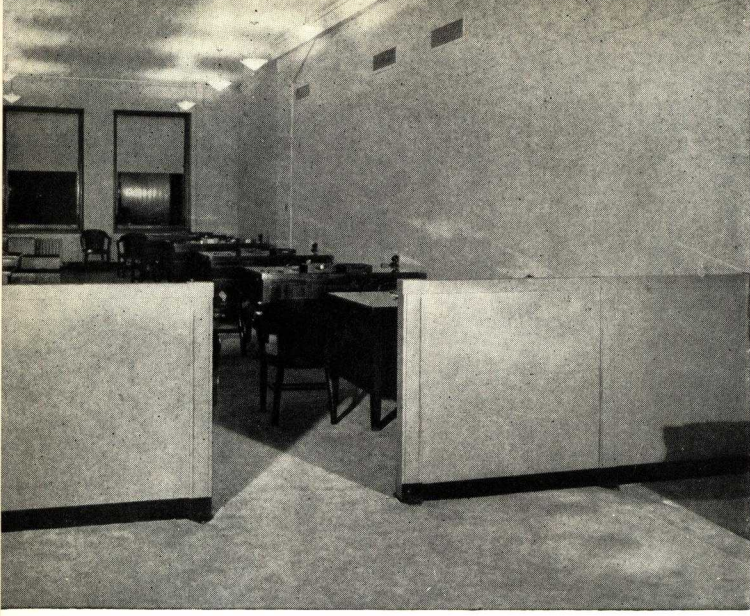


Fig. 10. Here a "RFS" flush sound proof wall divides general secretarial department from public space. Air conditioning ducts are readily installed in the top filler

Snead Dynamic

TYPES "RF", "RFS" AND "FF" "Absolutely Flush Walls"

Sound Proofed and Sound Deadening

TYPES "RF" and "RFS" have no projecting members. They retain generally all the details of construction and all the flexibility and reusability of Type "SF". It presents a perfectly flush surface save for the two small "V" relief lines at panel joints. This partition offers the architect and building owner new possibilities where dignity of appearance and conformity to masonry is desired in corridors and offices.

Type "RFS" differs only from "RF" in that the interior is solidly packed with mineral wool, resulting in sound-proofness much greater than a plaster wall. For executive offices, there is no finer wall.

Type "FF"—A structurally rigid, partition built of 3 in. thick solid packed units. Absolutely flush, with single hairline joints, it has the appearance of a solid wall, and is as sound proof as "SFS" and "RFS".

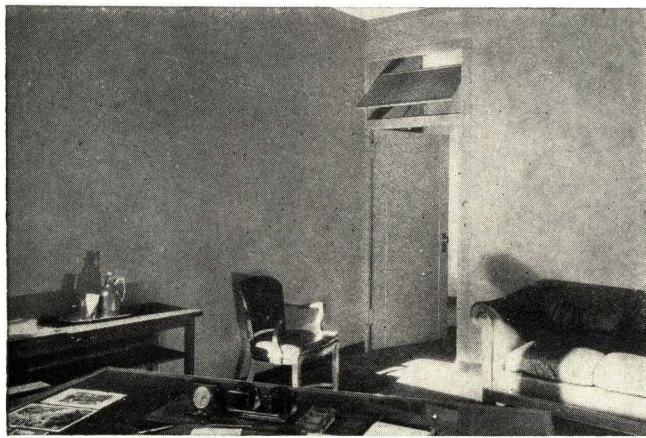
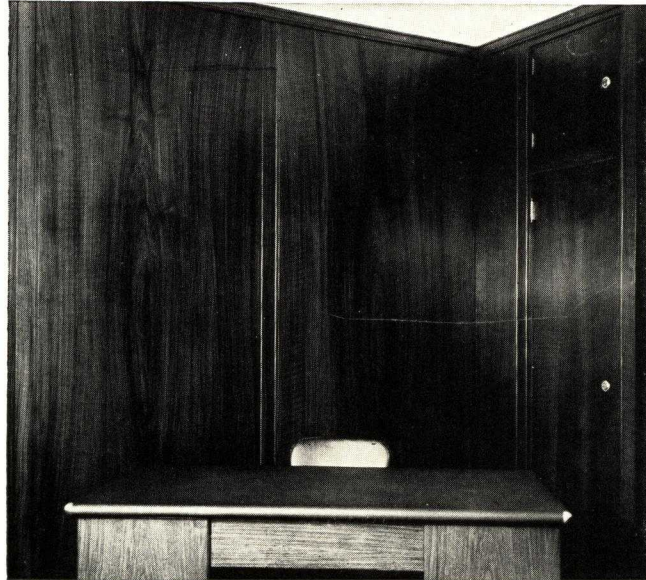


Fig. 11. Executive's office using Type "FF". Sound proof, single line, permanent in appearance, yet readily movable and re-usable

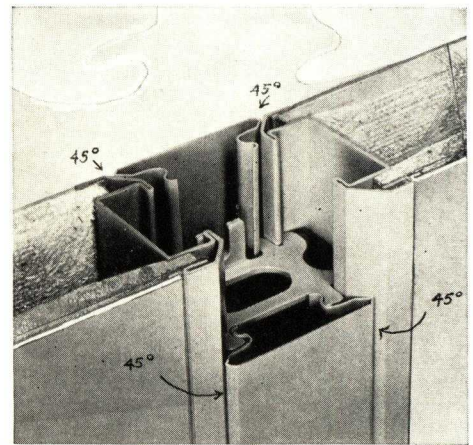
Transforms Old Premises

Never before have customers been so loath to transact business in a partitioned or walled off space indicative of make shift penuriousness, and with the dinginess of the back room of the old saloon. Architects are solving this condition in factories, real estate offices, professional offices, business offices, etc., by using suitable Snead Dynamic Walls.

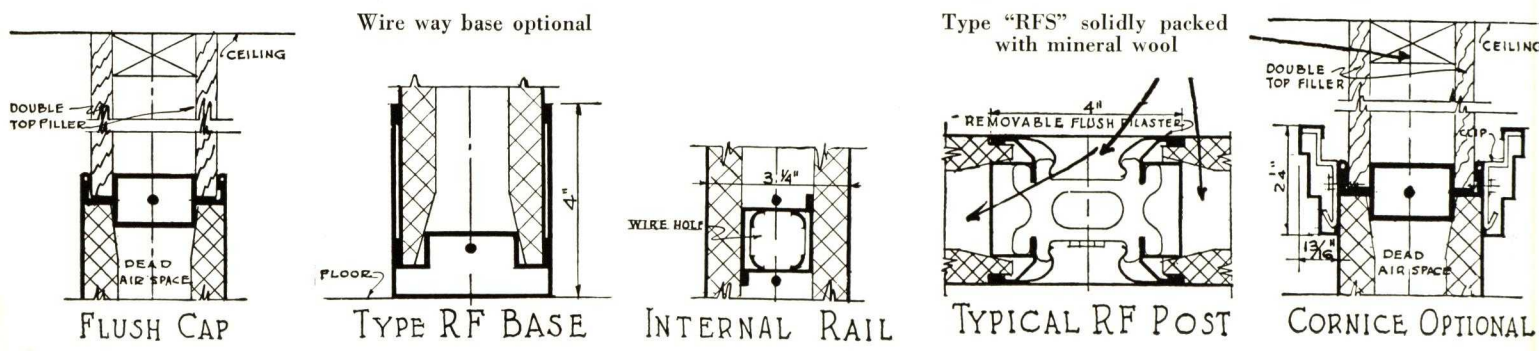
This bit of modernization transforms the atmosphere as if by magic, restores waning prestige, holds trade and keeps tenants from seeking more sightly quarters.



Left: Fig. 12. A wardrobe and personal cabinet using standard parts are incorporated in this private office of "RFS" grained walnut panels



Right: Fig. 13. Section through "RF" panels and posts. Note the link plate in one piece, which locks and aligns panels, and to which both post covers are clipped. No other partition has a one-piece clip nor the 45° angle on integral posts



Snead Dynamic

BANK SCREENS AND RAILINGS

HARMONIZE WITH WALLS AND JUNIOR PARTITIONS

THE construction and architectural details of Snead Bank Screens are the same, type for type, as those of the partitions. Surfaces are flush and the units are made in the same widths as the partition units. They connect to the partition wall without fillers or adapters.

The height over-all may be from 5 to 6 ft., with the steel panel from 3 to 5 ft., high and the balance glass. At all heights the Snead design of anchorage to the floor gives absolute rigidity. Screens are especially suitable for semi-private offices where ventilation and interior lighting are factors. Glass is either $\frac{1}{4}$ in. plate or $\frac{1}{4}$ in. obscure. Its top edge is ground smooth.

The railing is also uniform in construction with partitions and screens, and is available in either 36 or 42 in. in height. Gates are hung on non-sag pivots and may be located where desired. Single acting and double acting gates are optional. Gate posts remain absolutely rigid. There are no angle braces in Snead Bank Screens and Railings to obstruct floor space or to trip over.

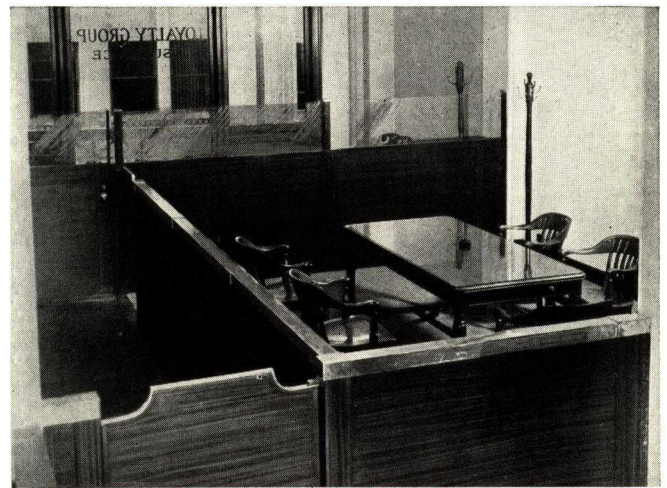
The materials and workmanship are of the same high quality as the partitions. The finish may be in plain baked-on enamels or in beautifully grained walnut and brown or red mahogany.



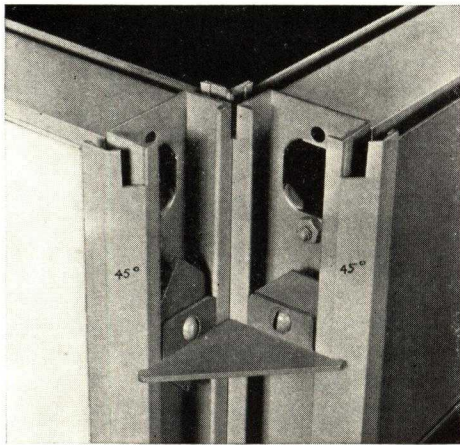
Fig. 15. Snead Bank Screens form this long line of semi-private offices, yet shut out no light or air from outside windows



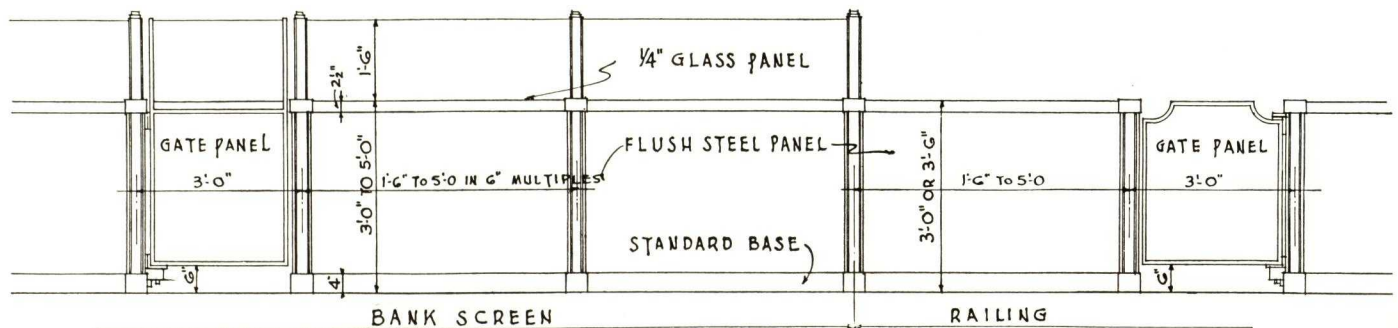
Fig. 16. Secretaries' offices of Snead "SF" Bank Screens also provide foyers here for departmental executives. Note two-tone finish



Right: Fig. 17. Type "SF" Bank Screen forms the main corridors in this large insurance company's office, while standard "SF" Railing is used to enclose salesmen's offices and consultation rooms. Note finish in horizontal mahogany and stainless steel top rail



Left: Fig. 14. Showing the simple, yet positive method of corner construction before snapping on corner plaster cover. Due to the 45° angle feature, no trim is necessary for the inside corner



Snead Dynamic

PARIS BUILDING
CONTAINS 14 MILES OF
SNEAD DYNAMIC WALLS

Chosen After Making
Sound Transmission Tests

THE OFFICE building constructed by the Compagnie Parisienne Distribution d'Electricite, has a total floor area exceeding 200,000 sq. ft. The architect, M. Urban Cassan, specified that all interior walls, partitions, closets and other enclosures should be double-panel insulated steel.

This decision was reached after careful studies of steel walls in comparison with masonry from all angles—floor-load, maintenance expense, fire hazards, fire retardance, flexibility for alteration, cost of changes, heat insulation, sound proofing, etc.

As a result of these studies and tests all corridors and offices in this building were constructed with standard interchangeable and reusable panel units of Type "SF" and "SFS." Window embrasures, radiator covers, were built of these units.

Outer walls were lined with standard Snead Dynamic "SF" Walls to obtain not merely uniform appearance, but to gain the other advantages of Snead Walls over painted plaster.

Sound Proof and Reverberation Tests

Acoustical tests were made in a series of systematic laboratory studies of various types of sound insulated steel walls to determine which construction rated best. The only one that proved to be better than masonry was the Snead's Dynamic Wall.

10 Where sound proof offices were specified Type "SFS"



Fig. 19. A view of one of the main corridors of the C.P.D.E. building, showing Snead Type "SFS" all steel to 7 ft. with glass above to ceiling

was used. Tests showed this type of wall to be more efficient than plaster block walls weighing 110 kilograms per square meter. Over a range of pitch limits from 100 cycles per second to 6,900, Snead Walls gave better sound insulation than 4 in. tile-and-plaster walls by a ratio of 22.9 to 20.5 and the ratio over the competing insulated steel wall was 22.9 to 9.3.

Reverberation, resonance from percussion and other practical acoustical factors were measured, as well as sound absorption. The official report published in the "Science In Industry" edition of Travaux particularly stressed two features of Snead construction:

(1) The snug fit in assembly of all parts without special adjustment.

(2) The soundproofness of Snead doors.

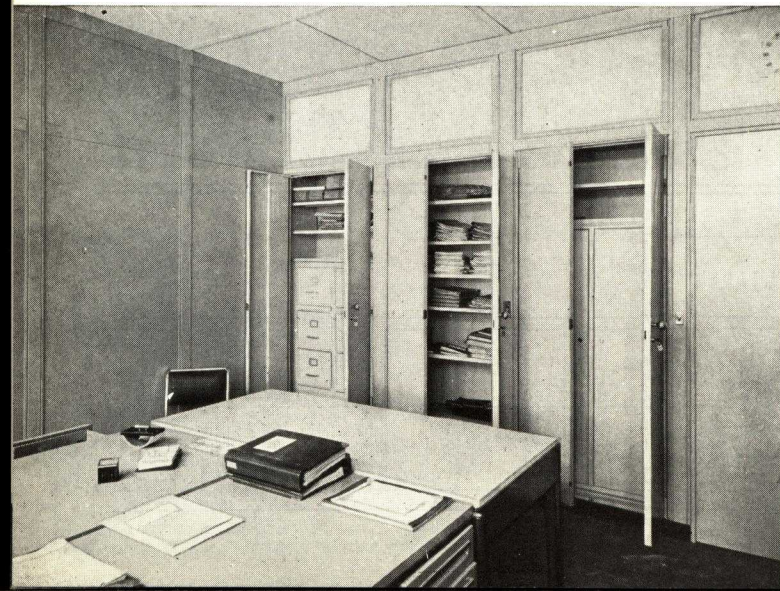
A continuous series of closets were built of standard stock units in the corridor partitions, opening on the room side. There are over 200 of these integral wall closets on each floor for the storage of supplies, books, files, and clothing. Wash rooms with all plumbing concealed within partition walls were likewise built of standard units.

QUIETNESS EARNS MONEY EVERY WORKING DAY

No person can truthfully claim that he can work as well under noisy conditions as he can where there is quiet. Let him try cotton or patented silencers in his ears for three days to learn the difference in his comfort and efficiency.

That quietness earns money can be easily proven in offices where the amount and quality of the work produced is readily measurable in dollars and cents. Wherever the human brain is required to concentrate, or to focus the attention of another mind, or even to do habitual office routine work, quietness will pay rich dividends on the investment in Snead Dynamic Walls.

Fig. 18. Interior of C.P.D.E. office showing closets of stock standard units integral with corridor walls. Type "SFS"



SNEAD AND COMPANY

Snead Dynamic

SOUND ABATEMENT WITH SOUNDPROOFED MOVABLE WALLS

GLOSSARY

NOISE: Any undesired sound.

RESIDUAL NOISE: All noise within an enclosure, as direct result only of street noise, building, etc.

TONE AND PITCH: Frequency of vibrations in cycles per second.

DECIBEL: Unit of sound intensity.

COMFORTABLE quiet (40 to 55 decibels) is necessary for efficient work. Distracting noise is always present. Snead "SFS" and "RFS" Soundproofed Movable Walls, used to isolate a noise source, will prevent passage of 40 to 50 decibels of such noise. **THIS REDUCTION IS GREATER THAN IS OBTAINED WITH A TILE AND PLASTER WALL 4½ TO 5" IN THICKNESS.**

We are principally concerned with the isolation of distracting office noises (business machine and typewriter operation, buzz of conversation, the use of miscellaneous equipment, such as files, etc.), or their reduction to the Quiet Comfortable Range. See table opposite. This "quiet range," however, approximates most closely the range of room "residual noise" always present to the extent of 40 to 45 decibels. To reduce this residual or room noise level, sound absorbing material within the room is used. This latter treatment is unnecessary except in connection with rooms used for scientific sound tests and experiments.

Snead Types "SFS" and "RFS", in all cases, will lower the outside office sound level to that of the "residual" or room noise. No other wall can do more. See this change in noise levels in "Table of Familiar Sounds" opposite as made possible by Snead Dynamic Walls. Note especially the intensity of sound of "breathing" and "whispering," and that in a "broadcasting studio" as compared with the average level of the quiet bracket.

For clerks and executives a reduction of noise throughout an eight hour day by as little as five decibels is a very profitable investment. One's best work cannot be done when ill temper and nerve strain are due to outside disturbances.

Actual records have shown that with noise source isolated, office errors have been reduced by as much as fifty percent, thereby increasing the all around efficiency of the organization.

Snead "SFS" and "RFS" Movable Walls feature:

PACKED PANELS, POSTS, RAILS AND TOP. SEALED PERIPHERY.

DOOR JAMBS WITH FELT STRIKES AND AUTOMATIC COMPRESSION FELT SEAL AT FLOOR.

ACOUSTIC TREATMENT FOR INTERIORS. DOUBLE GLAZING WHERE GLASS IS USED.

To give you Any degree of soundproofing desired.

TABLE OF FAMILIAR NOISES WITH THEIR INTENSITY SHOWN IN DECIBELS

	DECIBELS	SOURCE OF NOISE
Deafening Noise Range	120	Threshold of Painful Feeling
	110	
SNEAD "SFS" & "RFS" WALLS Reduce Noise in This Range Down to This LEVEL	100	Artillery Firing
	90	Airplane Motor
	85	Subway Train
	80	Elevated Train from Street
Distracting Office Noise Range	75	Business and Tabulating Machines
	70	
	65	
Very Quiet Comfortable Range, Also Range of Residual Noise	60	Stenographic Room
	55	
Extreme Quiet Not Commercially Practical for Offices	50	Office of 4 to 6 People
	45	Average Private Office
	40	Ordinary Conversation 3 Feet from Source
	35	Very Quiet Private Office
	30	
Broadcasting Studio Whisper 4 Feet from Source Ordinary Breathing	25	Threshold of Audibility
	20	
	15	
	10	
	5	
	0	

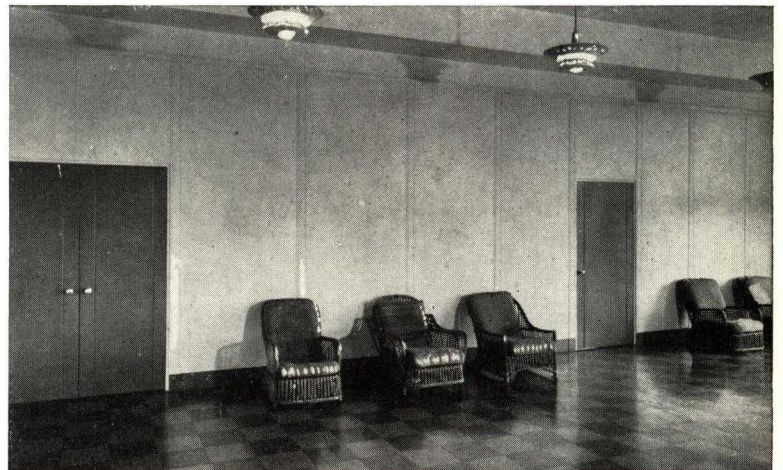


Fig. 20. This sound proof all-steel wall separates recreation room from general office space. Partitions finished to match building interior. Type "SFS"

Right: Fig. 21. Both light and sound proofness are obtained here with a double-glazed wall of Type "SFS"



ALL TYPES IN STOCK

Snead Dynamic

TYPE "M" WALL

1/2 in. Thick—Insulated Panel

SNEAD Type "M" Partition is the standard panel type with all the Dynamic flexible and reusable features. The panels are 1/2 in. thick, with a single instead of double insulation. The posts have a thickness of 2 in. plus 1/2 in. for each of the two removable plaster covers.

The panels are joined to each other by means of positive and self-aligning link plates to which the covers are clipped. The partition is assembled by means of horizontal tie-rods, readily permitting the cutting down of a panel in the field.

Any combination of steel and glass is available. Changes from steel to glass or vice versa are easily accomplished. Panels of same size are interchangeable. All mouldings are simple in contour with minimum of

Fig. 23. Typical installation of Type "M" partitions in large mercantile office. Type "M" railing forms salesmen's and secretaries' space outside of executives' offices, opening on entrance foyer



Short Specifications (Continued)

Construction—Panel widths to be of standard sizes with tie-rod assembly and integral posts. Panels to be so arranged as to permit removal of any unit without disturbing adjacent units or top filler. Provision to be made for future additions in any direction without removing adjacent work. Panels to be locked with one piece positive, self-aligning link plates to which is clipped final plaster trim. Top filler to be double mineral board.

Doors—1 3/4 in. thick hollow metal packed solid with sound-deadening fiber board, clearances at head and jambs not over 3/32 of an inch. Reinforcement to be provided for all hardware.

Transoms—To be of center horizontal bronze friction pivot type with concealed operator (or pole operation).

Hardware—To be manufacturers' standard with one pair 5 x 4 butts and bit key lock (cylinder lock, door closer, door stop).

Finish—All parts to be thoroughly cleaned of grease and oil. Prime coat of all surfaces to be of rust-resisting enamel baked on. Flat color finish in two coats of high-grade enamel baked on. The final coat to be in egg-shell gloss.

Glass and Glazing—Complete by this manufacturer. Glass to be as shown and called for on drawings; all glass to be set with best quality steel partition putty, of color to match partitions, free from sags, holes or blisters. Glazing stops to be of snap-on construction. No exposed screws permitted.

Erection—Manufacturer shall set plumb and level all partitions in a rigid and substantial manner. All anchors to be of concealed type yet permitting easy removal of any section. All hardware to be fitted and left in perfect working order. Top filler to be taped, pointed and field painted after erection and partitions rubbed down and left free of all dust and smudges.

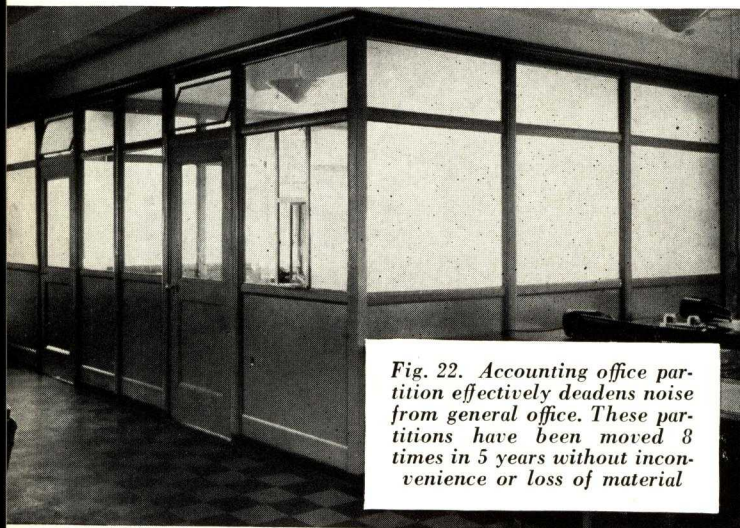


Fig. 22. Accounting office partition effectively deadens noise from general office. These partitions have been moved 3 times in 5 years without inconvenience or loss of material

dust-catching ledges. All horizontal and vertical members can carry concealed wiring, switches and receptacle boxes. Sturdy cornice member insures great rigidity. Double mineral board above the cornice is neatly scribed around beams and to the ceiling.

TYPE "MF"—Single Panel

Identical in appearance with Type "M" but constructed with a single steel panel. It is important to note that Type "MF" partitions are interchangeable and reusable with Type "M" partitions.

Short Specifications (All Types)

Furnish and erect complete Snead movable wall as manufactured by SNEAD & COMPANY, Jersey City. Type (insert type) as shown and called for on drawings.

Material—All materials to be of the best of their respective kinds, steel to be first quality, patent stretcher level furniture stock. Posts of 16 gauge, horizontal rails 20 gauge, cornice trim 18 gauge and cornice reinforcement 10 gauge, panel sheets 20 gauge, cemented to 1/2 in. thick sound-deadening fibre board.

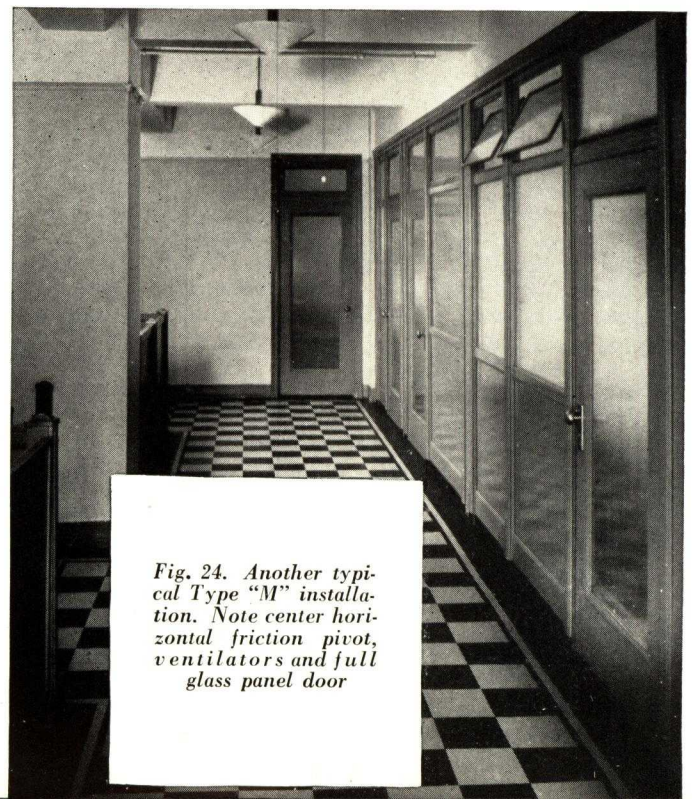
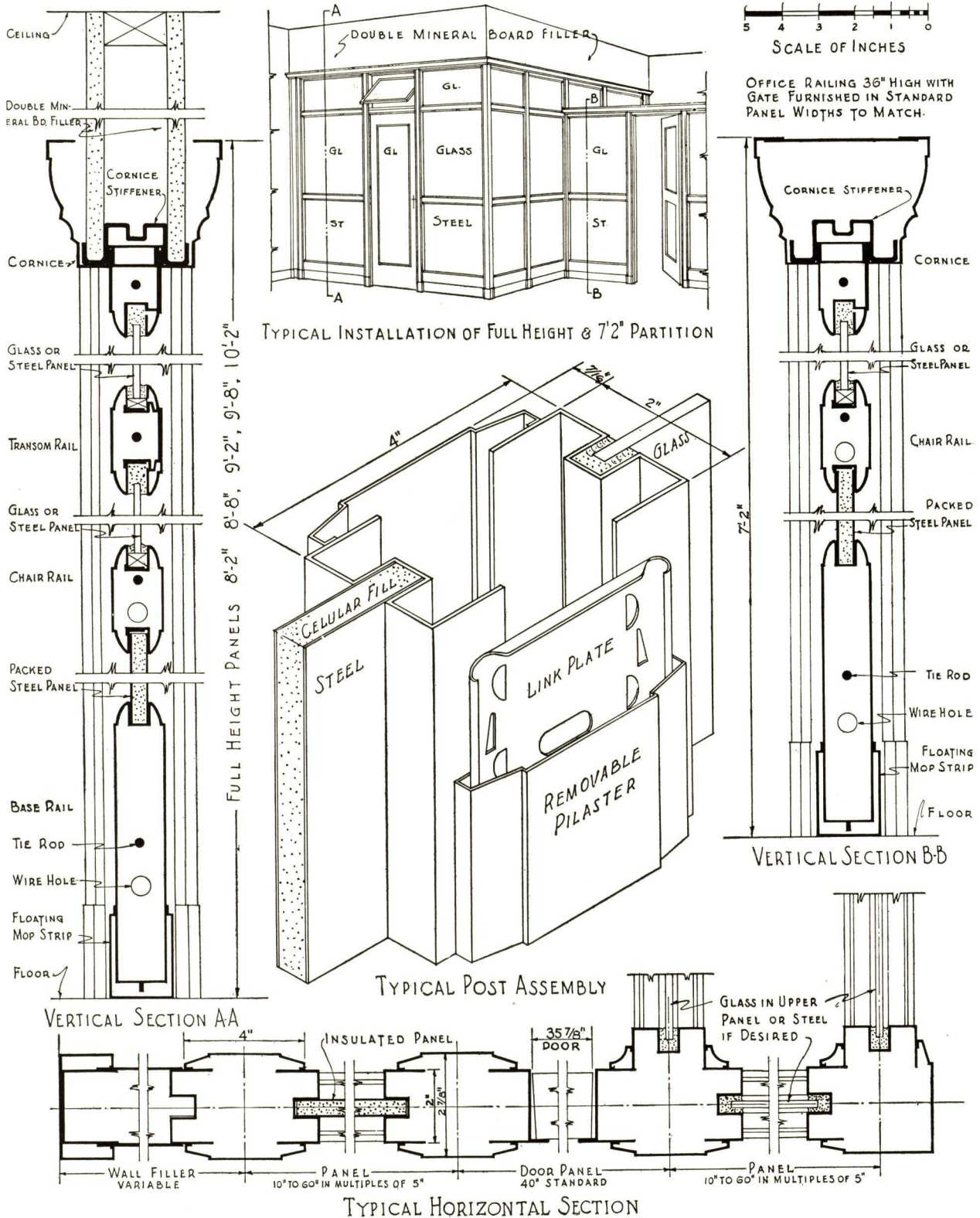
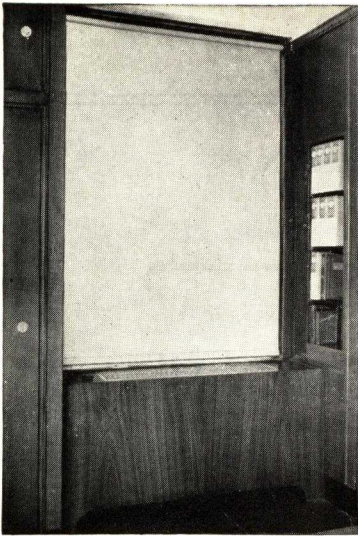


Fig. 24. Another typical Type "M" installation. Note center horizontal friction pivot, ventilators and full glass panel door

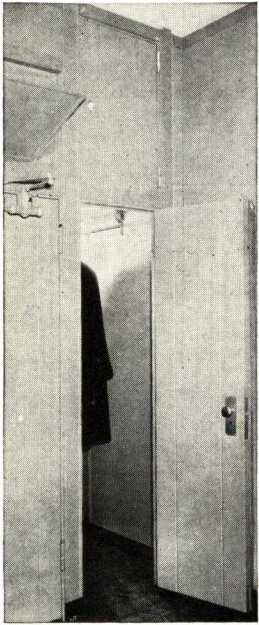
DETAILS OF SNEAD TYPE "M" OFFICE PARTITION INSULATED PANEL



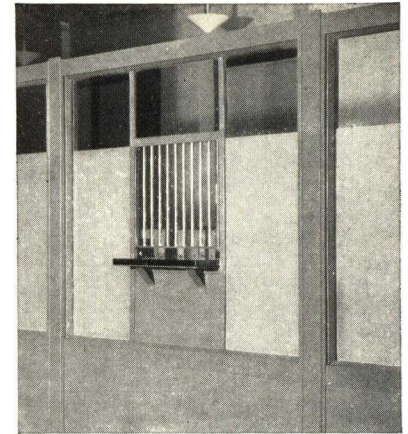


Window embrasure, radiator cover, built-in closets and book shelves

Built-in wardrobe with or without washstands, with private cabinet above. See standard parts



Integrally built-in counter with slide doors and shelves in rear. Linoleum top with white metal edging



Bank Type bronze fixed grille and carrara glass deal plate, Type "SF", without conventional cornice mold

*Below:
All steel to 7' 0" with transom lights above is standard. Note built-in information window*

Snead Dynamic

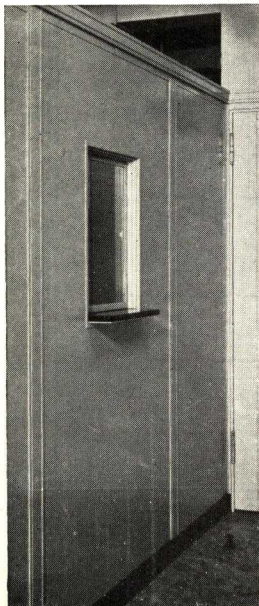
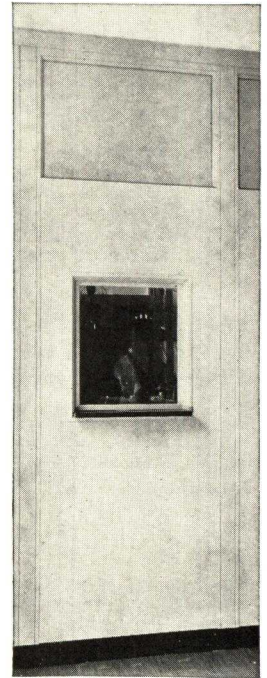
WALL ACCESSORIES

SPECIAL, YET STANDARD INSTALLATIONS

Illustrated are only a few of the not unusual types of work and accessories that, due to the extreme flexibility of Snead Dynamic Walls, are made every day. Any special arrangement of panels, or special accessories for your individual purpose or need, may be easily and economically incorporated in Snead Dynamic Walls, giving a built-in, permanent custom-made appearance, and will not appear as an afterthought.

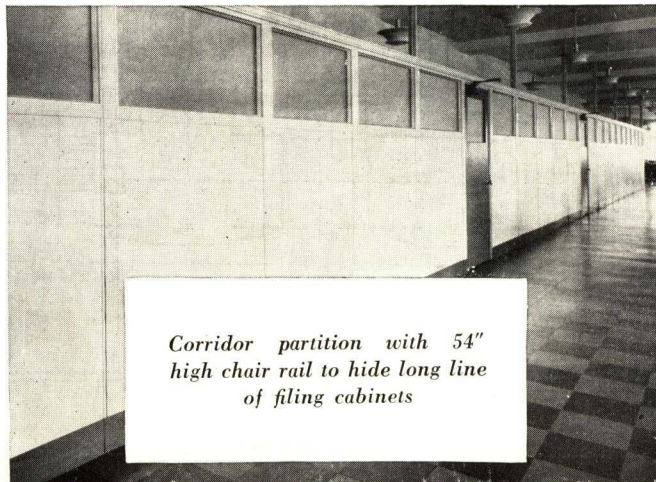
Snead engineers will solve any of your special needs.

For list of nationally known users of Snead Dynamic Walls, see back cover.



*Left:
Wickets or information windows to any specifications, easily incorporated in all types of walls*

*Below:
A built-in store window in a large advertising firm for national window styling. Note slide doors to cupboards under*

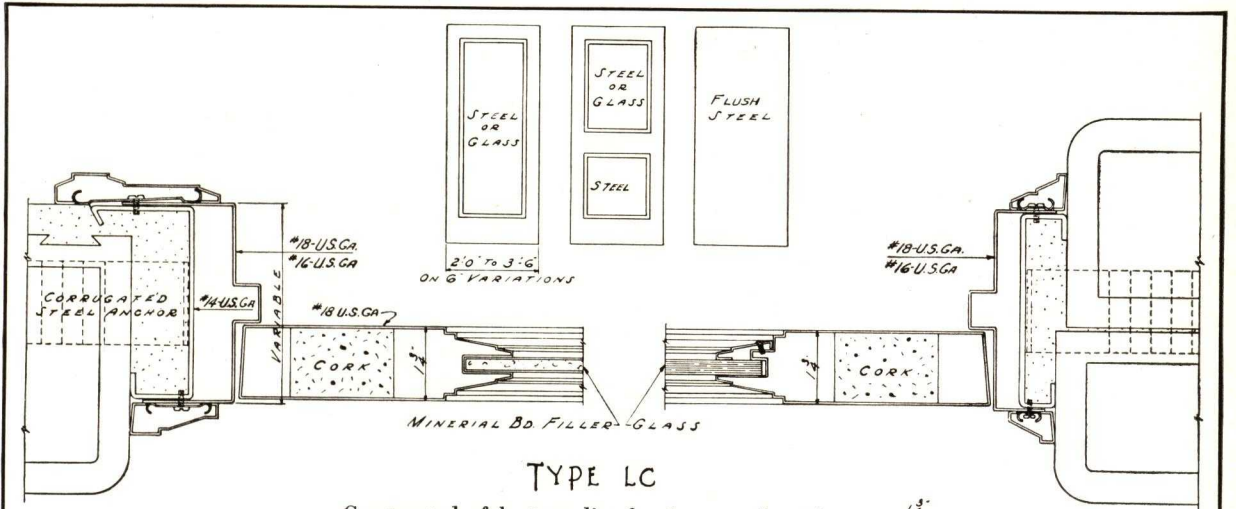
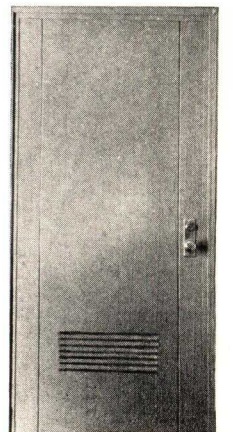
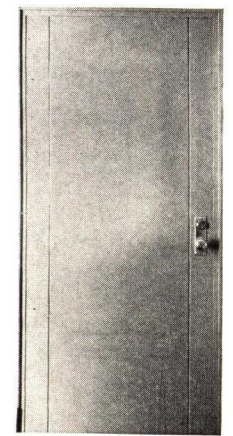
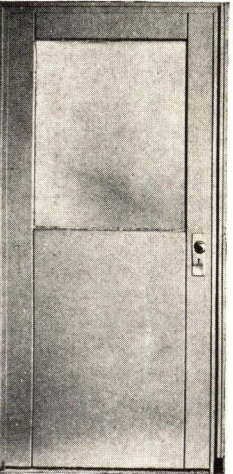
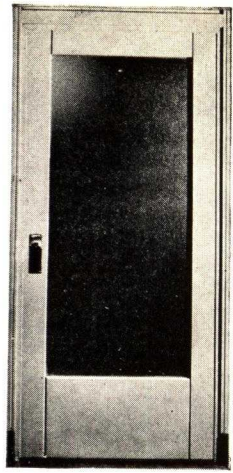


Corridor partition with 54" high chair rail to hide long line of filing cabinets



Snead Dynamic

HOLLOW METAL DOORS AND TRIM

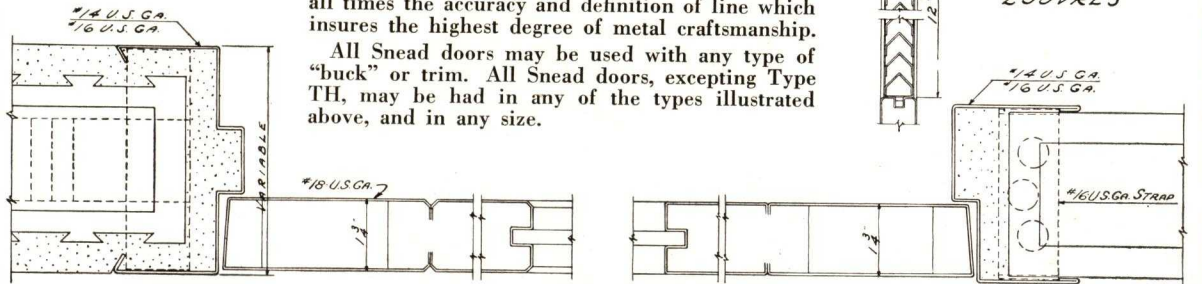


TYPE LC

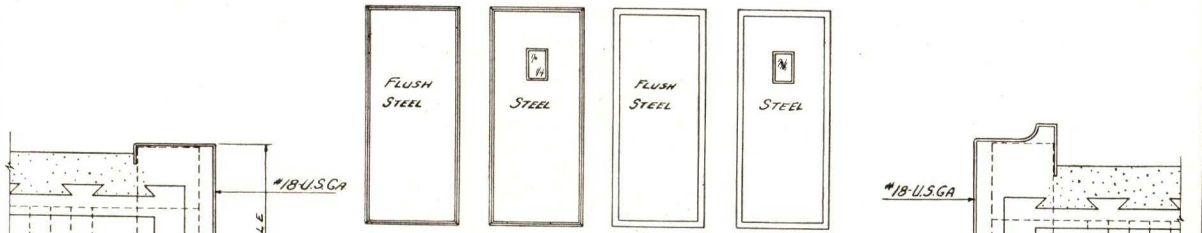
Constructed of best quality furniture steel, with craftsmanship born of almost ninety years of manufacturing experience of metal products, Snead offers a wide range of hollow metal doors and trim.

The Snead cold strip rolling process provides at all times the accuracy and definition of line which insures the highest degree of metal craftsmanship.

All Snead doors may be used with any type of "buck" or trim. All Snead doors, excepting Type TH, may be had in any of the types illustrated above, and in any size.



TYPE HP



TYPE TH

HOLLOW METAL TRIM

Picture mold, wire way base or plain base, and chair rail are also available in many different types, to harmonize with door and door trim.

Illustrated Are a Few Typical Hollow Metal Doors

Type LC—The highest grade hollow metal door. This door is made in 7 different models of two different types. The "buck" or trim may be had in a variety of designs or types. For highest grade installations.

Type, HP—Of simple, modern, flush design, yet most rugged, this type is especially adapted for and has been used in many of the newer hospital buildings. See photographs of four styles at left.

Type TH—This type was designed to fulfill the requirements of a low cost door for housing and industrial work. It can be had in either 1 or 1 1/2 in. thickness. Furnished in all steel only, with or without vision panels.

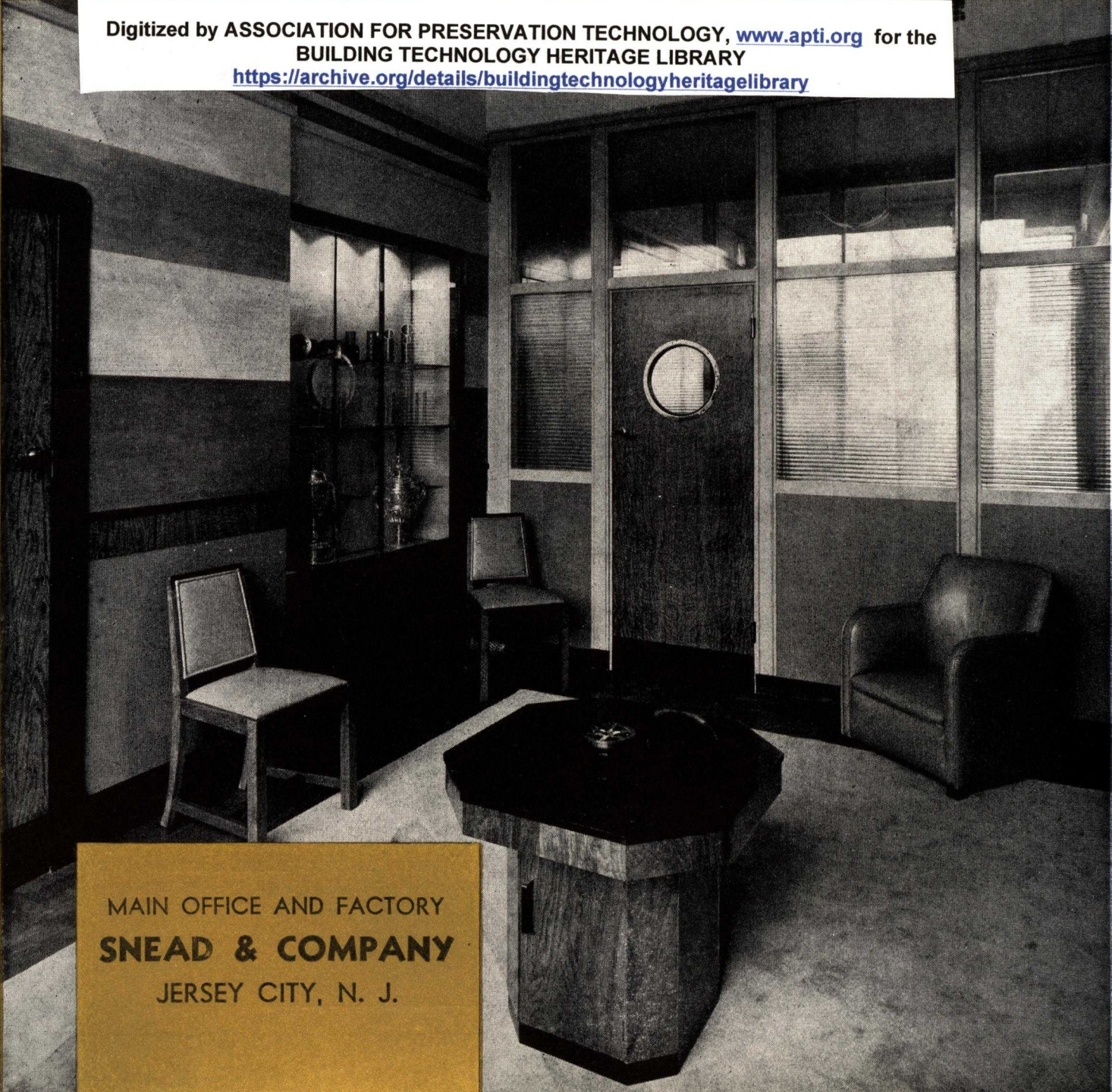
SOME NATIONALLY KNOWN USERS

Acacia Mutual Life Ins. Co.
American Can Company
American Home Products Corp.
Bakelite Corporation
Bankers Trust Company
Bayer Company
Bell Telephone Laboratories
Benton & Bowles Advertising Company
Bigelow Sanford Carpet Company
Boston Edison
Boston Public Works Building
Bowery Savings Bank
Carnegie Institute of Technology
Charleston Telephone Company
Chesapeake & Potomac Company
Columbia University
Columbia Presbyterian Hospital Group
Cornell Medical Center
Dartmouth University

Distiller's Limited
Electrolux Incorporated
Fireman's Insurance Company
Fidelity & Deposit Company of Maryland
Insurance Company of North America
International Printing Ink Corporation
Intertype Corporation
Library of Congress Annex
Macy, R. H. & Company
Medical College of Virginia
Mumm, G. H. Company
National Broadcasting Company
New York Academy of Medicine
New York Curb Exchange
New York Dock Company
New York Edison Company
New York, New Haven & Hartford RR. Company
New York Stock Exchange

Newell Emmett Company
Pennsylvania RR. Company
Port of New York Authority
Prudential Insurance Company
Public National Bank & Trust Company
Regal Shoe
Rex Cole, Inc.
R.K.O. Pathe
Sears-Roebuck Building, N. Y. C.
Southern Railway Company
Standard Brands Company
Standard Oil of New Jersey
Standard Oil of New York
Twentieth Century Fox Film Co.
Union Carbide and Carbon Company
U. S. Rubber Company
Western Union Company
W.O.R. Broadcasting Company
Yale University

Digitized by ASSOCIATION FOR PRESERVATION TECHNOLOGY, www.apti.org for the
BUILDING TECHNOLOGY HERITAGE LIBRARY
<https://archive.org/details/buildingtechnologyheritagelibrary>



MAIN OFFICE AND FACTORY
SNEAD & COMPANY
JERSEY CITY, N. J.